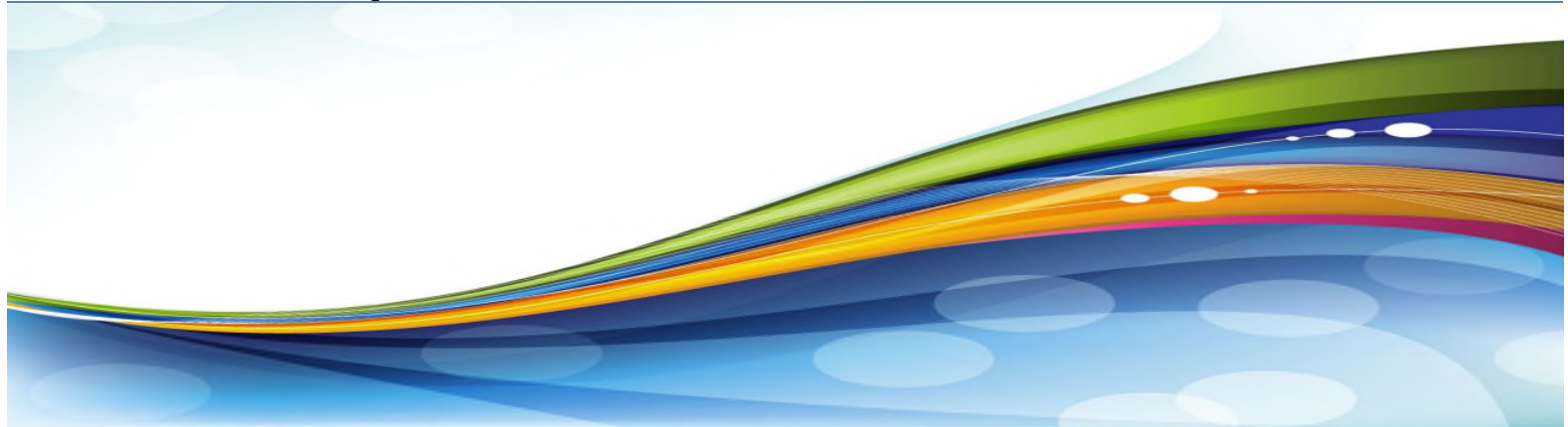




Atchison Hospital

Primary Service Area

Community Health Needs Assessment Round #2



June 2016

**VVV Consultants LLC
Olathe, KS**

Community Health Needs Assessment

Table of Contents

I. Executive Summary

II. Methodology

- a) CHNA Scope and Purpose
- b) Local Collaborating CHNA Parties (The identity of any and all organizations with which the organization collaborated and third parties that engaged to assist with the CHNA)
- c) CHNA and Town Hall Research Process (A description of the process and methods used to conduct the CHNA, a description of how the organization considered the input of persons representing the community, and an explanation of the process / criteria used in prioritizing such needs)
- d) Community Profile (A description of the community served by the facility and how the community was determined)

III. Community Health Status

- a) Town Hall CHNA Findings: Areas of Strengths and Areas to Change and/or Improve
- b) County Health Area of Future Focus (A prioritized description of all of the community needs identified by the CHNA)
- c) Historical Health Statistics

IV. Inventory of Existing County Health Resources

- a) A description of the existing healthcare facilities and other resources within the community available to meet the needs identified through the CHNA

V. Detail Exhibits

- a) Patient Origin and Access to Care
- b) Town Hall Attendees, Notes and Feedback (Who attended with qualifications)
- c) Public Notice and News
- d) Primary Research Detail

*Shaded lines note IRS requirements

I. Executive Summary

[VVV Consultants LLC]

I. Executive Summary

Atchison Hospital (Primary Service Area) - 2016 Community Health Needs Assessment (CHNA)

Creating healthy communities requires a high level of mutual understanding and collaboration among community leaders. The development of this assessment brings together community health leaders and providers, along with local residents, to research and prioritize county health needs and document community health delivery successes. This health assessment will serve as the foundation for community health improvement efforts for the next three years. The last CHNA for Atchison Hospital (Primary Service Area) was published in June of 2013. (Note: The Patient Protection and Affordable Care Act (ACA) requires not-for-profit hospitals to conduct a CHNA every three years and adopt an implementation strategy to meet the needs identified by the CHNA). This assessment was coordinated and produced by VVV Consultants LLC (Olathe, Kansas) under the direction of Vince Vandehaar, MBA.

The CHNA provides benefits to local health service organizations, the hospital, the public health department, as well as the community, in the following ways: 1) Increases knowledge of community health needs and resources 2) Creates a common understanding of the priorities of the community's health needs 3) Enhances relationships and mutual understanding between and among stakeholders 4) Provides a basis upon which community stakeholders can make decisions about how they can contribute to improving the health of the community 5) Provides rationale for current and potential funders to support efforts to improve the health of the community 6) Creates opportunities for collaboration in delivery of services to the community and 7) Provides guidance to the hospital and local health department for how they can align their services and community benefit programs to best meet needs.

Town Hall "Community Health Strengths" cited for Atchison Hospital's Primary Service Area are as follows:

Atchison Hospital (Primary Service Area) - Community Health "Strengths"			
#	Topic	#	Topic
1	Access to exercise	10	Inpatient services
2	Pharmacy	11	Medical staff
3	Up-to-date hospital facility	12	Community engagement
4	Have an FQHC	13	Grants received for sidewalks, trails, streets, curbs, YMCA
5	School nursing	14	Home health and hospice
6	Head start program	15	Administrative staff
7	Live Well Live Atchison	16	Rehab services
8	Continuum of care providers	17	Access to education
9	Growing young professionals		

Town Hall “Community Health Changes and/or Improvements Ranking” cited for Atchison Hospital’s Primary Service Area are as follows:

Atchison Hospital - Primary Service Area				
2016 Community Health Needs - Town Hall Priorities (34 Attendees, 136 Votes)				
#	Health Needs to Change and/or Improve	Votes	%	Accum
1	Obesity (Nutrition, Fitness, Wellness Coach)	22	16.2%	16.2%
2	Alcohol / Drug Abuse (Meth, Rx, Opioids, Heroin)	19	14.0%	30.1%
3	Health Policy Priority (City / County)	14	10.3%	40.4%
4	Uninsured	11	8.1%	48.5%
5	Economic Development	11	8.1%	56.6%
6	Lack of Visiting Providers: Dialysis, Dermatology, OBGYN, Pediatrician, Psychiatry, Diabetic Educator	11	8.1%	64.7%
7	Healthcare Transportation	10	7.4%	72.1%
8	Mental Health	10	7.4%	79.4%
Total Town Hall Votes		136	100.0%	
Other Items Noted: Emergency Services / Urgent Care, Tobacco Use, Affordable Housing, Parenting / Family Structure, Sharps Disposal, Pedestrian Friendliness, Education of Services Available, Senior Living / Geriatric and Mammographies.				

Key Community Health Needs Assessment Conclusions from secondary research for Atchison Hospital’s Primary Service Area are as follows:

KS HEALTH RANKINGS: According to the 2016 RWJ County Health Rankings study, Atchison County’s highest State of Kansas ranking (of 105 counties) was in Physical Environment.

TAB 1. Demographic Profile
TAB 2. Economic/Business Profile
TAB 3. Educational Profile
TAB 4. Maternal and Infant Health Profile
TAB 5. Hospitalization / Providers Profile
TAB 6. Behavioral Health Profile
TAB 7. Risk Indicators & Factors
TAB 8. Uninsured Profile
TAB 9. Mortality Profile
TAB 10. Preventative Quality Measures

- TAB 1: Atchison County has a population of 16,398 residents as of July 1, 2015. The percent change in population in Atchison County from April 1, 2010 to July 1, 2015 is -3.1%. The percent of residents in Atchison County who are White and alone is 90.8%, lower than the Kansas CAH norm of 92.8%. The percent of residents in Atchison County who are Black or African American and alone 5.2%, higher than the Kansas CAH norm of 1.7%. The percent of residents in Atchison County who are living the same house as one year ago is 85.6%, lower than the Kansas CAH norm of 88.0%. The percent of residents in Atchison County who are age 65+ living alone is 27.5%, lower than the

Kansas CAH norm of 30.1%. There are 1,075 veterans in Atchison County, higher than the Kansas CAH norm of 989. There are 39.3 persons per square mile in Atchison County, higher than the Kansas CAH norm of 21.5. The rate of violent crime in Atchison County is 248, higher than the Kansas CAH norm of 193. The percent of children in Atchison County living in single-parent households is 35.0%, higher than the Kansas CAH norm of 25.0%. The percent of residents in Atchison County living below poverty level is 18.3%, higher than the Kansas CAH norm of 12.0%. The percent of children in Atchison County living below poverty level is 22.7%, higher than the Kansas CAH norm of 16.5%. The percent of residents in Atchison County age 65+ living below poverty level is 11.1%, higher than the Kansas CAH norm of 8.4%. The voter turnout in Atchison County is 63.1%, lower than the Kansas CAH norm of 67.9%.

- TAB 2: The median household income in Atchison County is \$44,648, lower than the Kansas CAH norm of \$50,390. The median value of owner-occupied housing units in Atchison County is \$85,800, lower than the Kansas CAH norm of \$105,511. The total owner-occupied housing units in Atchison County is 72.8, lower than the Kansas CAH norm of 76.6. The percent of renters in Atchison County spending 30% or more of their household income on rent is 39.8%, higher than the Kansas CAH norm of 36.0%. The total retail sales per capita in Atchison County is \$7,546, higher than the Kansas CAH norm of \$1,131. The total number of firms in Atchison County is 925, higher than the Kansas CAH norm of 406. Unemployment in Atchison County is 6.5%, higher than the Kansas CAH norm of 4.3%. Food insecurity in Atchison County is at 17.0%, higher than the Kansas CAH norm of 14.0%. The percent of low income persons who are SNAP participants in Atchison County is 29.2%, higher than the Kansas CAH norm of 19.1%. The percent of households without a vehicle in Atchison County is 8.4%, higher than the Kansas CAH norm of 4.9%. The percent of persons with a long commute driving alone in Atchison County is 24.0%, lower than the Kansas CAH norm of 26.0%. The percent of workers in Atchison County who walk to work is 6.0%, higher than the Kansas CAH norm of 3.7%.
- TAB 3: In Atchison County, 51.0% of students are eligible for free lunch, higher than the Kansas CAH norm of 31.0%. The percent of children in poverty in Atchison County is 22.0%, higher than the Kansas CAH norm of 17.0%.
- TAB 4: The percent of low birth weights in Atchison County is 8.0%, higher than the Kansas CAH norm of 6.0%. The percent of births where mothers smoked during pregnancy in Atchison County 26.9%, higher than the Kansas CAH norm of 18.0%. The number of teen births in Atchison County is 32, higher than the Kansas CAH norm of 29. The percent of births occurring to unmarried women in Atchison County is 48.8%, higher than the Kansas CAH norm of 32.1%. The average monthly WIC participation per 1,000 population in Atchison County is 24.8, higher than the Kansas CAH norm of 18.0. The percent of WIC mothers breastfeeding exclusively in Atchison County is 8.1%, lower than the Kansas CAH norm of 14.9%.
- TAB 5: The ratio of the population in Atchison County to primary care physicians is 2,090, higher than the Kansas CAH norm of 2,004. The percent of births in Atchison County with inadequate birth spacing is 8.3%, lower than the Kansas CAH norm of 10.0%. The number of preventable hospital stays in Atchison County is 70, higher than the Kansas CAH norm of 64. The Heart Disease hospital admission rate in Atchison County is 402.6, higher than the Kansas CAH norm of 324.6. The Congestive Heart

Failure hospitalization rate in Atchison County is 177.9, higher than the Kansas CAH norm of 173.6. The Bacterial Pneumonia hospital admission rate in Atchison County is 394.4, higher than the Kansas CAH norm of 313.4. The Chronic Obstructive Pulmonary Disease (COPD) hospital admission rate in Atchison County is 187.6, lower than the Kansas CAH norm of 196.6. The injury hospital admission rate in Atchison County is 1,409.1, higher than the Kansas CAH norm of 951.9.

- TAB 6: The percent of alcohol-impaired driving deaths in Atchison County is 44.0%, higher than the Kansas CAH norm of 37.0%.
- TAB 7: The percent of adults tested and diagnosed with high cholesterol in Atchison County is 40.9%, higher than the Kansas CAH norm of 37.0%. The percent of adult obesity in Atchison County is 30.0%, lower than the Kansas CAH norm of 32.0%. The percent of adults who are binge drinkers in Atchison County is 19.5%, higher than the Kansas CAH norm of 17.4%. The percent of adults who currently smoke cigarettes in Atchison County is 23.0%, higher than the Kansas CAH norm of 19.6%. The percent of the population in Atchison County served unaffected by SDWA nitrate violations is 100.0%, higher than the Kansas CAH norm of 92.4%. The rate of sexually transmitted infections in Atchison County is 232.0, higher than the Kansas CAH norm of 183.4. The percent of the Medicare population in Atchison County with Rheumatoid Arthritis or Osteoarthritis is 25.5%, lower than the Kansas CAH norm of 27.0%. The percent of the Medicare population in Atchison County with Chronic Kidney Disease is 14.0%, higher than the Kansas CAH norm of 11.9%. The percent of the Medicare population in Atchison County with Osteoporosis is 3.5%, lower than the Kansas CAH norm of 5.4%.
- TAB 8: The percent of residents uninsured in Atchison County is 13.0%, higher than the Kansas CAH norm of 12.8%.
- TAB 9: The age-adjusted mortality rate per 100,000 population in Atchison County is 807.7, higher than the Kansas CAH norm of 748.2. The age-adjusted years of potential life lost due to traffic injury in Atchison County is 759.4, lower than the Kansas CAH norm of 896.7. The age-adjusted Cancer mortality rate per 100,000 population in Atchison County is 185.5, lower than the Kansas CAH norm of 163.8. The age-adjusted Heart Disease mortality rate per 100,000 population in Atchison County is 151.4, lower than the Kansas CAH norm of 157.4. The age-adjusted Chronic Lower Respiratory Disease mortality rate per 100,000 population in Atchison County is 51.2, higher than the Kansas CAH norm of 49.5. The age-adjusted traffic injury mortality rate per 100,000 population in Atchison County is 15.9, lower than the Kansas CAH norm of 22.6. The age-adjusted unintentional injuries mortality rate per 100,000 population in Atchison County is 53.2, higher than the Kansas CAH norm of 41.8. The age-adjusted suicide mortality rate per 100,000 in Atchison County is 26.2, higher than the Kansas CAH norm of 18.8.
- TAB 10: The percent of access to exercise opportunities in Atchison County is 65.0%, higher than the Kansas CAH norm of 38.0%. The percent of adults in Atchison County who reported consuming fruit less than one time per day in Atchison County is 47.6%, higher than the Kansas CAH norm of 42.3%. The percent of diabetic monitoring in Atchison County is 79.0%, lower than the Kansas CAH norm of 87.0%. The percent of mammography screenings in Atchison County is 51.0%, lower than the Kansas CAH norm of 59.0%.

Key 2016 Community Feedback Conclusions

In March of 2016, Atchison Hospital (AH) collected stakeholder feedback from their primary service area consumers, community leaders and groups, public and other organizations, and other providers. These stakeholders (N=156) provided the following community feedback insights via an online perception survey:

- 54.5% of AH primary service area stakeholders would rate the overall quality of healthcare delivery in their community as either Very Good or Good, with Very Good being the highest ranking.
- AH primary service area stakeholders are satisfied with the following services: Chiropractors, Dentists, Eye Doctor/Optomtrist, Home Health, Hospice, Inpatient Services, Pharmacy and School Nurse.
- AH primary service area stakeholders are not satisfied with the following services: Emergency Room, Family Planning Services, Mental Health Services, Nursing Home and Visiting Specialists.
- 76.6% of AH primary service area stakeholders have received healthcare services outside of their community over the past two years.
- AH primary service area stakeholders perceive the following causes of disease or disability a problem in their community: Abuse/Violence, Diabetes, Drugs/Substance Abuse, Mental Illness, Nutrition, Obesity, Physical Exercise, Poverty and Wellness Education.

As seen below, the community still senses a health need for Obesity (Nutrition and Fitness), Drug Abuse (Focus on Prescription Drugs), Alcohol Abuse (Excessive Drinking), Economic Development, Affordable Transportation for Health Services, Smoking Prevention, Access to Mental Health Providers and Medicaid Dental Coverage for the Uninsured.

Atchison Hospital (Primary Service Area) Atchison Co, KS N=156						
4. From our last CHNA (2013), a number of health needs were identified as priorities. Are any of these 2013 CHNA needs still an "Ongoing Problem" in Atchison County?						
Answer Options	Not a Problem Anymore	Somewhat of a Problem	Major Problem	Problem %	Response Count	Most Pressing Rank
Obesity (nutrition and fitness)	0	47	82	100.0%	129	2
Drug abuse (focus on prescription drugs)	3	61	63	97.6%	127	1
Alcohol abuse (excessive drinking)	7	59	59	94.4%	125	7
Economic development	8	58	61	93.7%	127	4
Affordable transportation for health services	11	54	61	91.3%	126	6
Smoking prevention	16	70	40	87.3%	126	9
Access to mental health providers	17	57	53	86.6%	127	3
Medicaid dental coverage for the uninsured	22	59	41	82.0%	122	8
School sex education	28	66	27	76.9%	121	10
Urgent care services	30	63	36	76.7%	129	4

II. Methodology

[VVV Consultants LLC]

II. Methodology

a) Scope and Purpose

The new federal Patient Protection and Affordable Care Act requires that each registered 501(c)3 hospital conduct a Community Health Needs Assessment (CHNA) at least once every three years and adopt a strategy to meet community health needs. Any hospital who has filed a 990 is required to conduct a CHNA. IRS Notice 2011-52 was released in late fall of 2011 to give notice and request comments.

JOB #1: Meet/Report IRS 990 Required Documentation

1. A description of the community served by the facility and how the community was determined;
2. A description of the process and methods used to conduct the CHNA;
3. The identity of any and all organizations with which the organization collaborated and third parties that it engaged to assist with the CHNA;
4. A description of how the organization considered the input of persons representing the community (*e.g., through meetings, focus groups, interviews, etc.*), who those persons are, and their qualifications;
5. A prioritized description of all of the community needs identified by the CHNA and an explanation of the process and criteria used in prioritizing such needs; and
6. A description of the existing health care facilities and other resources within the community available to meet the needs identified through the CHNA.

Section 501(r) provides that a CHNA must take into account input from persons who represent the broad interests of the community served by the hospital facility, including individuals with special knowledge of or expertise in public health. Under the Notice, the persons consulted must also include: Government agencies with current information relevant to the health needs of the community and representatives or members in the community that are medically underserved, low-income, minority populations, and populations with chronic disease needs. In addition, a hospital organization may seek input from other individuals and organizations located in or serving the hospital facility's defined community (*e.g., health care consumer advocates, academic experts, private businesses, health insurance and managed care organizations, etc.*).

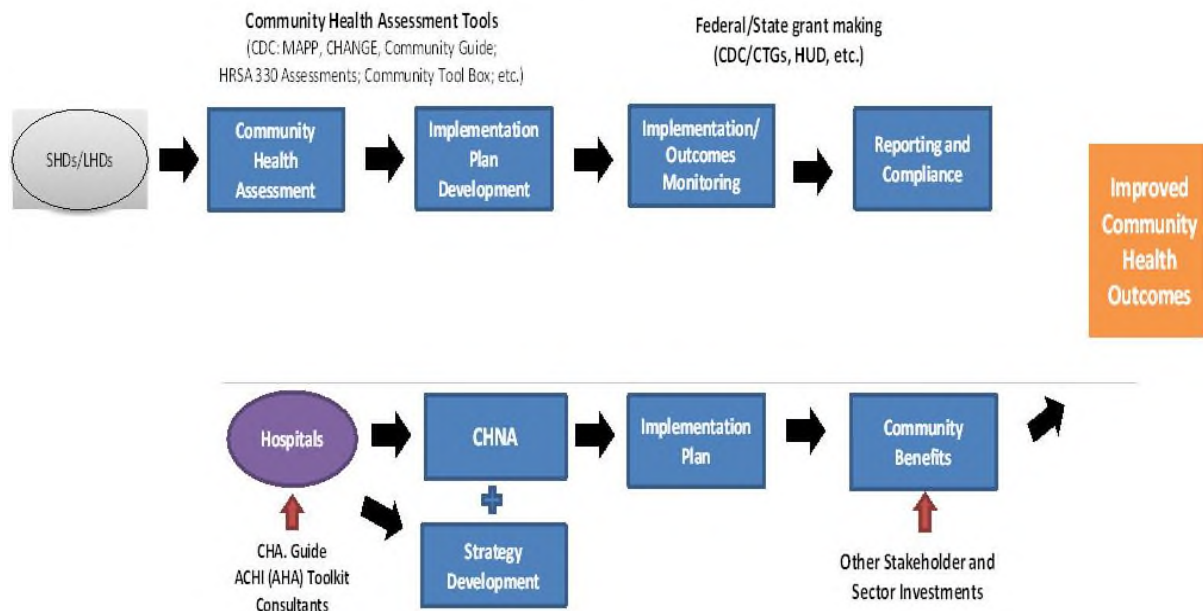
JOB #2: Making a CHNA Widely Available to the Public

The Notice provides that a CHNA will be considered to be "conducted" in the taxable year that the written report of the CHNA findings is made widely available to the public. The Notice also indicates that the IRS intends to pattern its rules for **making a CHNA "widely available to the public"** after the rules currently in effect for Form 990. Accordingly, an organization would make a **facility's written report** widely available by posting the final report on its website either in the form of (1) the report itself, in a readily accessible format or (2) a link to another organization's website, along with instructions for accessing the report on that website. *The Notice clarifies that an organization must post the CHNA for each facility until the date on which its subsequent CHNA for that facility is posted.*

JOB #3: Adopt an Implementation Strategy by Hospital

Section 501(r) requires a hospital organization to adopt an implementation strategy to meet the needs identified through each CHNA. The Notice defines an “implementation strategy” as a written plan that addresses each of the needs identified in a CHNA by either (1) describing how the facility plans to meet the health need or (2) identifying the health need as one that the facility does not intend to meet and explaining why the facility does not intend to meet it. A hospital organization may develop an implementation strategy in collaboration with other organizations, which must be identified in the implementation strategy. As with the CHNA, a hospital organization that operates multiple hospital facilities must have a separate written implementation strategy for each of its facilities.

Great emphasis has been given to work hand-in-hand with leaders from hospitals, the state health department and the local health department. A common approach has been adopted to create the CHNA, leading to aligned implementation plans and community reporting.



IRS Notice 2011-52 Overview

Notice and Request for Comments Regarding the Community Health Needs Assessment Requirements for Tax-exempt Hospitals

Applicability of CHNA Requirements to “Hospital Organizations”

The CHNA requirements apply to “hospital organizations,” which are defined in Section 501(r) to include (1) organizations that operate one or more state-licensed hospital facilities, and (2) any other organization that the Treasury Secretary determines is providing hospital care as its principal function or basis for exemption.

How and When to Conduct a CHNA

Under Section 501(r), a hospital organization is required to conduct a CHNA for each of its hospital facilities once every three taxable years. ***The CHNA must take into account input from persons representing the community served by the hospital facility and must be made widely available to the public. The CHNA requirements are effective for taxable years beginning after March 23, 2012.*** As a result, a hospital organization with a June 30 fiscal year end must conduct an initial CHNA for each of its hospital facilities by June 30, 2013, either during the fiscal year ending June 30, 2015 or during either of the two previous fiscal years.

Determining the Community Served

A CHNA must identify and assess the health needs of the **community served** by the hospital facility. Although the Notice suggests that geographic location should be the primary basis for defining the community served, it provides that the organization may also take into account the target populations served by the facility (e.g., children, women, or the aged) and/or the facility’s principal functions (e.g., specialty area or targeted disease). *A hospital organization, however, will not be permitted to define the community served in a way that would effectively circumvent the CHNA requirements (e.g., by excluding medically underserved populations, low-income persons, minority groups, or those with chronic disease needs).*

Persons Representing the Community Served

Section 501(r) provides that a CHNA must take into account input from **persons who represent the broad interests of the community** served by the hospital facility, including individuals with special knowledge of or expertise in public health. Under the Notice, the persons consulted must also include: (1) government agencies with current information relevant to the health needs of the community and (2) representatives or members of medically underserved, low-income, and minority populations, and populations with chronic disease needs, in the community. In addition, a hospital organization may seek input from other individuals and organizations located in or serving the hospital facility’s defined community (e.g., health care consumer advocates, academic experts, private businesses, health insurance and managed care organizations, etc.).

Required Documentation

The Notice provides that a hospital organization will be required to separately document the CHNA for each of its hospital facilities in a **written report** that includes the following information: 1) a description of the community served by the facility and how the community was determined; 2) a description of the process and methods used to conduct the CHNA; 3) the identity of any and all organizations with which the organization collaborated and third parties that it engaged to assist with the CHNA; 4) a description of how the organization considered the input of persons representing the community (e.g., through meetings, focus groups, interviews, etc.), who those persons are, and their qualifications; 5) a prioritized description of all of the community needs identified by the CHNA and an explanation of the process and criteria used in prioritizing such needs; and 6) a description of the existing health care facilities and other resources within the community available to meet the needs identified through the CHNA.

Making a CHNA Widely Available to the Public

The Notice provides that a CHNA will be considered to be “**conducted**” in the taxable year that the written report of the CHNA findings is made widely available to the public. The Notice also indicates that the IRS intends to pattern its rules for making a CHNA “widely available to the public” after the rules currently in effect for Forms 990. *Accordingly, an organization would make a facility’s written report widely available by posting on its website either (1) the report itself, in a readily accessible format, or (2) a link to another organization’s website, along with instructions for accessing the report on that website. The Notice clarifies that an organization must post the CHNA for each facility until the date on which its subsequent CHNA for that facility is posted.*

How and When to Adopt an Implementation Strategy

Section 501(r) requires a hospital organization to adopt an implementation strategy to meet the needs identified through each CHNA. **The Notice defines an “implementation strategy” as a written plan that addresses each of the needs identified in a CHNA by either (1) describing how the facility plans to meet the health need, or (2) identifying the health need as one that the facility does not intend to meet and explaining why the facility does not intend to meet it.** A hospital organization may develop an implementation strategy in collaboration with other organizations, which must be identified in the implementation strategy. As with the CHNA, a hospital organization that operates multiple hospital facilities must have a separate written implementation strategy for each of its facilities.

Under the Notice, an implementation strategy is considered to be “adopted” on the date the strategy is approved by the organization’s board of directors or by a committee of the board or other parties legally authorized by the board to act on its behalf. Further, the formal adoption of the implementation strategy must occur by the end of the same taxable year in which the written report of the CHNA findings was made available to the public. For hospital organizations with a June 30 fiscal year end, that effectively means that the organization must complete and appropriately post its first CHNA no later than its fiscal year ending June 30, 2013, and formally adopt a related implementation strategy by the end of the same tax year. *This final requirement may come as a surprise to many charitable hospitals, considering Section 501(r) contains no deadline for the adoption of the implementation strategy.*

Year 2015 - IRS and Treasury Finalize Patient Protection Rules for Tax-Exempt Hospitals

ACCOUNTING TODAY 1/2/15

The Internal Revenue Service and the Treasury Department have issued **final regulations** under the Affordable Care Act to protect patients in tax-exempt hospitals from aggressive debt collection practices and to provide other rules for charitable hospitals.

Under the **final regulations**, each Section 501(c)(3) hospital organization is required to meet four general requirements on a facility-by-facility basis: establish written financial assistance and emergency medical care policies; limit the amounts charged for emergency or other medically necessary care to individuals eligible for assistance under the hospital's financial assistance policy; make reasonable efforts to determine whether an individual is eligible for assistance under the hospital's financial assistance policy before engaging in extraordinary collection actions against the individual; and conduct a community health needs assessment, or CHNA, and adopt an implementation strategy at least once every three years. The first three requirements are effective for tax years beginning after March 23, 2010 and the CHNA requirements are effective for tax years beginning after March 23, 2012.

The ACA also added a new Section 4959, which imposes an excise tax for failure to meet the CHNA requirements, and added reporting requirements. These final regulations provide guidance on the entities that must meet these requirements, the reporting obligations relating to these requirements and the consequences for failing to satisfy the requirements. "Charitable hospitals represent more than half of the nation's hospitals and play a key role in improving the health of the communities they serve," wrote Emily McMahon, Deputy Assistant Secretary for Tax Policy at the U.S. Department of the Treasury, in a **blog post** Monday explaining the requirements. "But reports that some charitable hospitals have used aggressive debt collection practices, including allowing debt collectors to pursue collections in emergency rooms, have highlighted the need for clear rules to protect patients. For hospitals to be tax-exempt, they should be held to a higher standard. That is why the Affordable Care Act included additional consumer protection requirements for charitable hospitals, so that patients are protected from abusive collections practices and have access to information about financial assistance at all tax-exempt hospitals."

She noted that as a condition of their tax-exempt status, charitable hospitals must take an active role in improving the health of the communities they serve. establish billing and collections protections for patients eligible for financial assistance, and provide patients with the information they need to apply for such assistance. "These final rules adopt the same framework of proposed regulations but simplify the compliance process for charitable hospitals, while continuing to provide meaningful guidance on protections for patients and requirements to assess community health needs," she added.

Under the new rules, hospitals cannot charge individuals eligible for financial assistance more for emergency or other medically necessary care than the amounts generally billed to patients with insurance (including Medicare, Medicaid, or private commercial insurance). In addition, every tax-exempt hospital must establish and widely publicize a financial assistance policy that clearly describes to patients the eligibility criteria for obtaining financial assistance and the method for applying for financial assistance.

Charitable hospitals are also prohibited from engaging in certain collection methods (for example, reporting a debt to a credit agency or garnishing wages) until they make reasonable efforts to determine whether an individual is eligible for assistance under the hospital's financial assistance policy.

In addition, each charitable hospital need to conduct and publish a community health needs assessment at least once every three years and disclose on the tax form that it files on an annual basis the steps it is taking to address the health needs identified in the assessment.

Many of the requirements have been in place since the Affordable Care Act passed in 2010, but in response to comments on the proposed regulations, the final rules also expand access to translations for patients, by lowering the threshold for having translations of financial assistance policies available from 10 percent of the community served as proposed, to five percent of the community served or population expected to be encountered by the hospital facility, or 1000 persons, whichever is less, according to McMahon. "The final rules also revise the notification requirements to maintain important protections for patients while making it easier for hospitals to comply with them," she wrote. "General notifications regarding a hospital's financial assistance policy must appear on bills and in the hospital. However, individual written and oral notifications of the hospital's financial assistance policy are now only required when a hospital plans to use extraordinary collections actions, such as reporting a debt to a credit bureau, selling the debt to a third party or garnishing wages."

While charitable hospitals must continue to make a good-faith effort to comply, the rules provide charitable hospitals with time to fully update their policies and programming to implement the changes. But if a charitable hospital fails to meet the consumer protection provisions required by the law, the hospital could have its tax-exempt status revoked. If a hospital fails to properly conduct a community health needs assessment or adopt an implementation strategy, an excise tax will apply, McMahon noted. "However, if a hospital fails to meet a requirement, but the failure is neither willful nor egregious, the hospital can correct and publicly disclose the error to have it excused, thus avoiding revocation of tax-exempt status, but the excise tax would still apply," she wrote.

II. Methodology

b) Collaborating CHNA Parties

Working together to improve community health takes collaboration. Listed below is an in-depth profile of the local hospital and health department CHNA partners:

Atchison Hospital Profile

800 Raven Hill Rd, Atchison, KS 66002
CEO: John Jacobson

About Us: Atchison Hospital has been the leading healthcare provider in the Atchison community and surrounding area since 1912. In 2010 a new facility was built and was designed with patient care in mind. Our 85,000 square foot, single story building allows all departments and nurses stations to be in close proximity which increases efficiency in patient care. Why go anywhere else when you can get the best care right here.

Features of Atchison Hospital

- Single-story facility design allowing for all departments to be in close proximity, increasing efficiency that is entirely patient focused.
- 25 private family friendly patient rooms each with their own bathroom; designed for patient comfort and privacy.
- The Emergency Department has private rooms, and a separate entry as well as dedicated parking.
- A four-bed Intensive Care Unit (ICU) located in the center of the Inpatient Care area. Each ICU room has its own restroom.
- Three large surgical suites with comfortable pre-op and post-op areas that accommodate video and fiber-optic technology to perform minimally invasive surgery.
- A Gastrointestinal (GI) Lab and an Infusion Services room.
- Comfortable, hotel-like, family friendly OB rooms that accommodate all phases of having a baby. Nurse's stations located closer to patient's rooms and the technology that allows the nursing staff to observe the patient's bedside fetal monitor from the nurse's station.

We do our best to keep up with technology so that our staff has the newest resources to provide the best care for our patients. We appreciate you taking the time to look at what our facility has to offer and we encourage you to come and take a look around for yourself. If you have any questions or would like to contact us, please call 913-367-2131 or visit us at 800 Raven Hill Drive, Atchison, KS 66002.

Our Mission: Atchison Hospital provides excellent healthcare and wellness for life.

Our Vision: Atchison Hospital is a leader in health and wellness:

- Patient Centered
- Regional
- Independent, community-owned
- Distinguished by our care and service
- Essential to our community

Our Values: Atchison Hospital recognizes our employees are our most valuable asset. We have identified core values successful employees need to strive for in order for us to accomplish our mission.

- Pride
- Trust
- Compassion
- Education
- Change Driven
- Quality
- Respect
- Innovative
- Teamwork
- Accountability/Ownership

Our Services: Atchison Hospital is a full service Community Hospital. We work hard to make sure that most of your health care needs can be met close to home, for both inpatient and outpatient care. Our team of visiting specialists complements our own local medical staff, and our highly trained employees give you the best care, right here. If you ever need more advanced care, our relationships with larger hospitals in St. Joseph or Kansas City can make a referral or transfer a much better experience for you and your family.

- Auxiliary
- Business Health Services
- Cardiac Rehab
- Cardiology
- Cardio Pulmonary Care
- Donations and Community Support
- Dietary Services
- Education
- Emergency Department
- Home Health and Hospice
- Intensive Care Unit
- Laboratory
- Medical/Surgical - Swing Bed Unit
- Obstetrics
- Orthopedics
- Pharmacy
- Radiology
- Rehabilitation (Physical Therapy, Occupational Therapy, and Speech Therapy)
- Surgery
- Social Services
- Volunteer Spirituality Support Program

NEK Multi-County Health Department., Inc. - Atchison County Health Department

NEK Multi County is a single non-profit agency offering public health, home health and hospice services across the tri-county area (Atchison, Brown and Jackson counties) for over 35 years.

NEK Multi County Health Departments, Inc. offers public health services across three counties. Some of those services include WIC (Women, Infants, Children), Healthy Start home visiting, immunizations for both children and adults, family planning, adult and child health assessments and communicable disease control. Our staff of registered nurses are professional, knowledgeable, compassionate and have extensive experience in the field of public health!

Atchison County Public Health Department is located at 616 Commercial street in Atchison, Kansas. Come in and see Connie, Beth and Karlene for all your public health needs including WIC, immunizations, well baby checks, hearing screens and more! Call 913-367-5152 to schedule an appointment.

II. Methodology

b) Collaborating CHNA Parties Continued

Consultant Qualifications



VVV Consultants LLC

Company Profile: 601 N. Mahaffie, Olathe, KS 66061 (913) 302-7264

VINCE VANDEHAAR, MBA

Principal Consultant and Owner of VVV Consultants LLC

VVV Consultants LLC was incorporated on May 28, 2009. With over 30 years of business and faculty experience in helping providers, payors and financial service firms obtain their strategic planning and research and development needs, Vince brings in-depth health industry knowledge, research aptitude, planning expertise and energy. VVV Consultants LLC services are organized, formal processes of listening to the voice of the customer. Vince started his consulting business after working for Saint Luke's Health System (SLHS) of Kansas City for 16 years. *(Note: Saint Luke's Hospital of Kansas City, SLHS's largest hospital, won the Malcolm Baldrige National Quality Award in March of 2003. The Baldrige examiners cited Vince's department as "Best Practice" in the areas of customer satisfaction, market research and evaluation efforts <Kansas City Star 3/10/04>).*

VVV Consultants LLC consultants have in-depth experience helping hospitals work with local health departments to engage community residents and leaders to identify gaps between existing health community resources and needs and construct detailed strategies to meet those needs, while still adhering to the hospital's mission and budget. Over the past 20 years, Vandehaar has completed eight comprehensive Baldrige aligned Community Health Needs Assessments for Saint Luke's of Kansas City System facilities (3 campuses) and was contracted to conduct two additional independent department of health consulting projects (prior to IRS 990 regs). To date, VVV has completed 55 CHNA IRS-aligned assessments for Iowa, Kansas, Missouri and Nebraska hospitals and health departments.

Vince Vandehaar, MBA is actively involved in the Kansas City community. He is a member the Greater Kansas City Employee Benefits Association, the Society for Healthcare Strategy and Market Development, the American Marketing Association Kansas City Chapter and Co-Chair of the AMA Kansas City Healthcare Special Interest Group. In addition to these roles, from 2000 to 2008, Vince served as the state chairman for MHA's Data Committee and was a member of KHA's Data Taskforce.

Collaborating Consultants

Alexa Backman, MBA - VVV Consultants LLC
Associate Consultant

II. Methodology

c) CHNA and Town Hall Research Process

Atchison Hospital's Community Health Needs Assessment (CHNA) process began in February 2016. At that time, an inquiry was made by John Jacobson, CEO, to VVV Consultants LLC to explore the possibility of conducting a comprehensive IRS-aligned CHNA. VVV Consultants LLC then reviewed CHNA experience, in-depth CHNA requirements and regulations, CHNA development options to meet IRS requirements and next steps after option approval.

VVV CHNA Deliverables:

- Confirm HMH service area meets 80-20 patient origin rule.
- Uncover/document basic secondary research and health of county, organized by 10 TABS.
- Conduct Town Hall meeting to discuss secondary data and uncover/prioritize county health needs.
- Conduct and report CHNA primary research (with valid N).
- Prepare and publish IRS-aligned CHNA report that meets requirements.

To ensure proper AH Town Hall representation that meets the Pareto principle (80-20 Rule), the following patient origin 3-year summary was generated to document the AH primary service area.

Atchison Hospital - KHA / Internal Records					I / O / E / PC
		Overall Hospital	3Yr Total		177,187
#	SA	Counties	ACCUM	%	Yr 2015-13
1	PSA	ATCHISON CO, KANSAS	80.5%	80.5%	142,609
2	SSA	DONIPHAN CO, KANSAS	86.0%	5.5%	9,781
3	SSA	BUCHANAN CO, MISSOURI	89.6%	3.6%	6,344
4	SSA	JEFFERSON CO, KANSAS	92.4%	2.8%	5,045
5	SSA	LEAVENWORTH CO, KANSAS	94.6%	2.2%	3,861
6	SSA	BROWN CO, KANSAS	96.5%	1.9%	3,333
7	SSA	PLATTE CO, MISSOURI	97.2%	0.7%	1,201

Atchison Hospital - CHNA Round #2 Work Plan

Project Timeline and Roles 2016

Step	Date (Start-Finish)	Lead	Task
1	1/1/2016	VVV	Sent VVV quote for review.
2	1/29/2016	Hosp	Select CHNA Option C. Approve to start work 3/1/16.
4	3/7/2016	VVV	Send out REQCommInvite Excel file. Hospital and health department to fill in PSA stakeholders names, addresses and e-mails.
5	3/7/2016	VVV	Request hospital client to send PO101, 102 and PO103 Reports to document service area for FFY 12, 13 and 14. In addition, request hospital to complete three year historical PSA IP/OP/ER/Clinic patient origin file (Use ZipPSA_3yrPOrigin.xls).
6	On or before 3/14/2016	VVV	Prepare CHNA Round#2 stakeholder feedback online link. Send text link for hospital review.
7	On or before 3/14/2016	VVV / Hosp	Prepare and send out PR story to local media announcing upcoming CHNA work. Hospital to place.
8	3/18/2016	VVV	Launch and conduct online survey to stakeholders. Hospital will e-mail invite to participate to all stakeholders.
9	3/18/2016	VVV / Hosp	Prepare and send out PR story to local media CHNA survey announcing online CHNA Round #2 feedback. Request public to participate.
10	On or before 4/8/2016	VVV	Assemble and complete secondary research. Find and populate 10 TABS. Create Town Hall PowerPoint for presentation.
11	on or before 4/8/2016	Hosp	Prepare and send out community Town Hall invite letter and place local ad.
12	4/8/2016	VVV / Hosp	Prepare and send out PR story to local media announcing upcoming Town Hall. VVV will mock up PR release to media sources.
13	On or before 4/19/2016	All	Conduct conference call (<i>time TBD</i>) with hospital and health department to review Town Hall data and flow.
14	4/26/2016	VVV	Conduct CHNA Town Hall from 6-7:30pm at Atchison Hospital. Review and discuss basic health data plus rank health needs.
15	On or before 6/1/2016	VVV	Complete analysis. Release draft one and seek feedback from leaders at hospital and health department.
16	On or before 7/1/2016	VVV	Produce and release final CHNA report. Hospital will post CHNA online.
17	On or before 8/1/2016	Hosp	Conduct client Implementation Plan PSA leadership meeting.
18	30 days prior to end of hospital fiscal year	Hosp	Hold board meetings to discuss CHNA needs, create and adopt an Implementation Plan. Communicate CHNA plan to community.

To meet IRS CHNA requirements, a four-phase methodology was reviewed and approved as follows:

Phase I—Discovery:

Conduct a 30-minute conference call with the CHNA hospital client and county health department. Review / confirm CHNA calendar of events, explain / coach client to complete required participant database and schedule / organize all Phase II activities.

Phase II—Qualify Community Need:

A) Conduct secondary research to uncover the following historical community health status for the primary service area. Use Kansas Hospital Association (KHA), Vital Statistics, Robert Wood Johnson County Health Rankings, etc. to document current state of county health organized as follows:

TAB 1. Demographic Profile
TAB 2. Economic/Business Profile
TAB 3. Educational Profile
TAB 4. Maternal and Infant Health Profile
TAB 5. Hospitalization / Providers Profile
TAB 6. Behavioral Health Profile
TAB 7. Risk Indicators & Factors
TAB 8. Uninsured Profile
TAB 9. Mortality Profile
TAB 10. Preventative Quality Measures

B) Gather historical primary research to uncover public health needs, practices and perceptions for hospital primary service areas.

Phase III—Quantify Community Need:

Conduct a 90-minute Town Hall meeting with required county primary service area residents. At each Town Hall meeting, CHNA secondary data will be reviewed, facilitated group discussion will occur and a group ranking activity to determine the most important community health needs will be administered.

Phase IV—Complete Data Analysis and Create Comprehensive Community Health Needs Assessment:

Post CHNA report findings to meet IRS-aligned CHNA criteria.

After consideration of CHNA stakeholders (sponsoring hospital and local health department), the CHNA Option C was selected with the following project schedule:

Phase I: Discovery.....	March 2016
Phase II: Secondary / Primary Research.....	April 2016
Phase III: Town Hall Meeting.....	April 26, 2016
Phase IV: Prepare / Release CHNA report.....	July 2016

Detail CHNA Development Steps Include:

Steps to Conduct Community Health Needs Assessment	
	Development Steps
Step # 1 Commitment	<i>Determine interest level of area healthcare leaders (Hospital, Health Dept, Mental Health Centers, Schools, Churches, Physicians etc), hold community meeting.</i>
Step # 2 Planning	<i>Prepare brief Community Health Needs Assessment Plan - list goals, objectives, purpose, outcome, roles, community involvement, etc. Hold Community Kick-off meeting.</i>
Step # 3 Secondary Research	<i>Collect & Report Community Health Published Facts. Gather data health practice data from published secondary research sources i.e. census, county health records, behavioral risk factors surveillance, etc.</i>
Step # 4a Primary Research	<i>Conduct Community Roundtable (Qualitative Research). Review Secondary Research (Step3) with Community Stakeholders. Gather current opinions and identify health needs.</i>
Step # 4b Primary Research <Optional>	<i>Collect Community Opinions. (Quantitative Research). Gather current opinions (Valid sample size) regarding community health needs and healthcare practices. If appropriate, conduct Physician Manpower Assessment to determine FTE Physician need by specialty.</i>
Steps # 5 Reporting	<i>Prepare/Present comprehensive Community Health Needs Assessment report (to community leaders) with Recommended Actions to improve health. < Note: Formal report will follow IRS Notice 2011-52 regs ></i>
VVV Research & Development, LLC 913 302-7264	

Overview of Town Hall Community Priority Setting Process

Each community has a wealth of expertise to be tapped for CHNA development. For this reason, a Town Hall is the perfect forum to gather community insight and provide an atmosphere to objectively consensus build and prioritize county health issues.

All Town Hall priority-setting and scoring processes involve the input of key stakeholders in attendance. Individuals and organizations attending the Town Halls were critically important to the success of the CHNA. The following list outlines partners invited to Town Hall: local hospital, public health community, mental health community, free clinics, community-based clinics, service providers, local residents, community leaders, opinion leaders, school leaders, business leaders, local government, faith-based organizations and persons (or organizations serving them), people with chronic conditions, uninsured community members, low income residents and minority groups.

Atchison Hospital's Town Hall was held on Tuesday, April 26, 2016 at Atchison Hospital. Vince Vandehaar and Alexa Backman facilitated this 1 ½ hour session with thirty-four (34) attendees. (Note: a detailed roster of Town Hall attendees is listed in Section V a).

The following Town Hall agenda was conducted:

1. Welcome and introductions.
2. Review purpose for the CHNA Town Hall and roles in the process.
3. Presentation/review of historical county health indicators (10 tabs).
4. Facilitate Town Hall participant discussion of data (probe health strengths/concerns). Reflect on size and seriousness of any health concerns cited and discuss current community health strengths.
5. Engage Town Hall participants to rank health needs (using four dots to cast votes on priority issues). Tally and rank top community health concerns cited.
6. Close meeting by reflecting on the health needs/community voting results. Inform participants on next steps.

At the end of each Town Hall session, VVV encouraged all community members to continue to contribute ideas to both hospital and health department leaders via e-mail or personal conversations.

(NOTE: To review detail Town Hall discussion content, please turn to Section V for detailed notes of session and activity card content reporting of open-end comments).

Community Health Needs Assessment Atchison County, KS Town Hall Meeting

on behalf of Atchison Hospital



Vince Vandehaar, MBA
VVV Consultants LLC
Owner / Adjunct Professor

Olathe, Kansas 66061
vmvandehaar@aol.com

www.vandehaarmarketing.com
913-302-7264

Community Health Needs Assessment (CHNA) Town Hall Discussion Agenda

- I. Opening / Introductions (10 mins)
- II. Review CHNA Purpose and Process (10 mins)
- III. Review Current County "Health Status"
Secondary Data by 10 TAB Categories
Review Community Feedback Research (35 mins)
- IV. Collect Community Health Perspectives
Hold Community Voting Activity: Determine
MOST Important Health Areas (30 mins)
 - I. Close / Next Steps (5 mins)

VVV Consultants LLC

I. Introduction:

Background and Experience



Vince Vandehaar, MBA
VVV Consultants LLC Principal Consultant
Olathe, KS 913 302-7264

- > Professional Consulting Services: Strategic Planning, Marketing Management, Business Research & Development
 - > Focus : Strategy , Research , Deployment
 - > Over 25 years of experience with Tillinghast, BCBSKC, Saint Luke's
- Adjunct Professor - Marketing / Health Admin, 26 years +**
- > Webster University (1988 – present)
 - > Rockhurst University (2010 – present)

Alexa Backman, MBA, Associate Consultant

Town Hall Participation (You)

- ALL attendees welcome to share.
 - Parking Lot
- There are no right or wrong answers.
- Only one person speaks at a time.
- Please give truthful responses.
- Have a little fun along the way.

I. Introductions: A Conversation with the Community

Community members and organizations invited to CHNA Town Hall

Consumers: Uninsured/underinsured people, Members of at-risk populations, Parents, caregivers and other consumers of health care in the community, and Consumer advocates.

Community leaders and groups: The hospital organization's board members, Local clergy and congregational leaders, Presidents or chairs of civic or service clubs -- Chamber of Commerce, veterans' organizations, Lions, Rotary, etc., Representatives from businesses -- owners/CEO's of large businesses (local or large corporations with local branches.), Business people & merchants (e.g., who sell tobacco, alcohol, or other drugs), Representatives from organized labor, Political, appointed and elected officials, Foundations, United Way organizations. And other "community leaders."

Public and other organizations: Public health officials, Directors or staff of health and human service organizations, City/Community planners and development officials, Individuals with business and economic development experience, Welfare and social service agency staff, Housing advocates - administrators of housing programs: homeless shelters, low-income-family housing and senior housing, Education officials and staff - school superintendents, principals and teachers, Public safety officials, Staff from state and area agencies on aging, Law enforcement agencies - Chiefs of police, Local colleges and universities, Coalitions working on health or other issues.

Other providers: Physicians, Leaders in other not-for-profit health care organizations, such as hospitals, clinics, nursing homes and home-based and community-based services, Leaders from Catholic Charities and other faith-based service providers, Mental health providers, Oral health providers, Health insurers, Parish and congregational nursing programs, Other health professionals

II. Purpose: Why Conduct Community Health Needs Assessment?

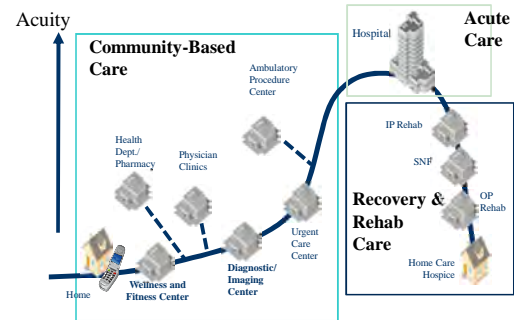
- To determine health-related trends and issues of the community.
- To understand/evaluate health delivery programs in place.
- To develop strategies to address unmet health needs.
- To meet Federal requirements -- both local hospital and health department.

II. Review CHNA Definition

A Community Health Needs Assessment (CHNA) is a systematic collection, assembly, analysis, and dissemination of information about the health of the community. (NOTE: Some the data has already been collected (published) by local, state and federal public health organizations. Some data will be collected today).

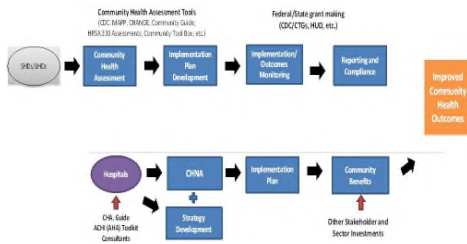
CHNA's role is to identify factors that affect the health of a population and determine the availability of resources to adequately address those factors.

Future System of Care Sg2



IP = inpatient; SNF = skilled nursing facility; OP = outpatient.

Community Health Needs Assessment Joint Process: Hospital and Health Department



II. Required Written Report IRS 990 Documentation

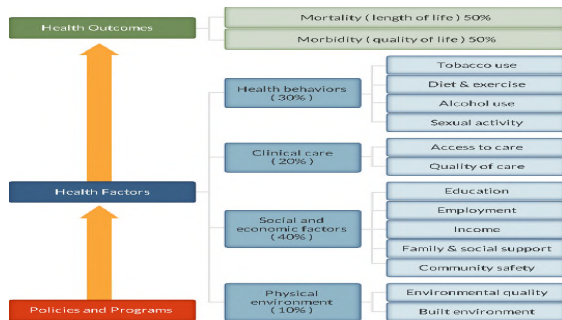
- a **description of the community served**
- a **description of the CHNA process**
- the **identity of any and all organizations & third parties** which collaborated to assist with the CHNA
- a **description of how the organization considered the input of persons representing the community (e.g., through meetings, focus groups, interviews, etc.),** who those persons are, and their qualifications
- a **prioritized description of all of the community needs identified by the CHNA** and
- a **description of the existing health care facilities and other resources within the community** available to meet the needs identified through the CHNA.

III. Review Current County “Health Status” Secondary Data by 10 Tab Categories plus KS State Rankings

TAB 1. Demographic Profile
TAB 2. Economic/Business Profile
TAB 3. Educational Profile
TAB 4. Maternal and Infant Health Profile
TAB 5. Hospitalization / Providers Profile
TAB 6. Behavioral Health Profile
TAB 7. Risk Indicators & Factors
TAB 8. Uninsured Profile
TAB 9. Mortality Profile
TAB 10. Preventative Quality Measures

County Health Rankings

Robert Wood Johnson Foundation and University of WI Health Institute



1	Focus Area	Measure	Physical Environment (10%)	2b	Focus Area	Measure	Social and Economic Environment (40%)						
Air and water quality (5%)	Air pollution particulate matter	The average daily measure of fine particulate matter in micrograms per cubic meter (PM2.5) in a county	Percent of population potentially exposed to water exceeding a violation limit during the past year	Community safety (5%)	Violent crime	Violent crime rate per 100,000 population	Injury deaths	Injury mortality per 100,000					
									Housing and transit (5%)	Severe housing problems	Percent of households with at least 1 of 4 housing problems: overcrowding, high housing costs, or lack of bathroom plumbing facilities	Driving alone to work	Percent of the workforce that drives alone to work
2a	Focus Area	Measure	Clinical Care (20%)	Focus Area	Measure	Description							
Access to care (10%)	Uninsured	Percent of population under age 65 without health insurance	Ratio of population to primary care physicians	Diet and exercise (10%)	Adult obesity	Percent of adults that report a BMI >= 30	Food environment index	Index of factors that contribute to a healthy food environment					
									Primary care physicians	Ratio of population to dentists	Alcohol and drug use (5%)	Alcohol-impaired driving deaths	Percent of driving deaths with alcohol involvement
									Quality of care (10%)	Preventable hospital days	Hospitalization rate for ambulatory-care sensitive conditions per 1,000 Medicare enrollees	Teen births	Teen birth rate per 1,000 female population, ages 15-19
Diabetic screening	Percent of diabetic Medicare enrollees that receive diabetic screening	Mammography screening	Percent of female Medicare enrollees that receive mammography screening	2b / 2c	Fertility / Mortality								
						2b	Focus Area	Measure	Social and Economic Environment (40%)	Focus Area	Measure	Description	
Education (10%)	High school graduation	Percent of ninth grade cohort that graduates in 4 years	Percent of adults aged 25-44 years with some post-secondary education	Quality of life (50%)	Poor or fair health	Percent of adults reporting fair or poor health (age-adjusted)	Poor physical health days	Average number of physically unhealthy days reported in past 30 days (age-adjusted)					
									Some college	Percent of population age 16+ unemployed but seeking work	Poor mental health days	Average number of mentally unhealthy days reported in past 30 days (age-adjusted)	
Employment (10%)	Unemployment	Percent of population age 16+ unemployed but seeking work	Children in poverty	Percent of children under age 18 in poverty	Low birthweight	Percent of live births with low birthweight (< 2500 grams)	Premature death	Rate of potential life lost before age 75 per 100,000 population (age-adjusted)					
									Income (10%)	Children in poverty	Percent of children under age 18 in poverty	Family and social support	Percent of adults without social/emotional support
Family and social support (5%)	Children in single-parent households	Percent of children that live in household headed by single parent											

IV. Collect Community Health Perspectives

Ask your opinion. Your thoughts?

- Tomorrow:** What is occurring or might occur that would affect the "health of our community?"
- Today:** What are the strengths of our community that contribute to health?
- Today:** Are there healthcare services in your community / neighborhood that you feel need to be improved and / or changed?

V. Have We Forgotten Anything ?

A. Aging Services	M. Hospice
B. Chronic Pain Management	N. Hospital Services
C. Dental Care/Oral Health	O. Maternal, Infant & Child Health
D. Developmental Disabilities	P. Nutrition
E. Domestic Violence,	R. Pharmacy Services
F. Early Detection & Screening	S. Primary Health Care
G. Environmental Health	T. Public Health
H. Exercise	U. School Health
I. Family Planning	V. Social Services
J. Food Safety	W. Specialty Medical Care Clinics
K. Health Care Coverage	X. Substance Abuse
L. Health Education	Y. Transportation
M. Home Health	Z. Other _____

Community Health Needs Assessment

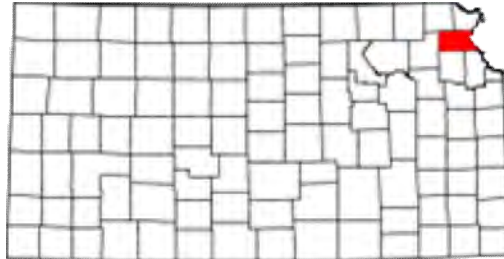
Questions Next Steps?

VVV Consultants LLC
 vmlvandehaar@aol.com
 913 302-7264

II. Methodology

d) Community Profile (A Description of Community Served)

Atchison County, Kansas Community Profile



Demographics

The population of Atchison County was estimated to be 16,398 on July 1, 2015, and had a -3.1% change in population from April 1, 2010–July 1, 2015.¹ According to the United States Census Bureau, its county seat and most populous city is Atchison. The county has a total area of 434 square miles, of which 431 square miles is land and 2.6 square miles is water.² Atchison County's population density is 38 persons per square mile and its industries providing employment are Agriculture (forestry, fishing and hunting, and mining) (30.6%), Public Administration (15.8%), Retail Trade (15.0%) and Construction (11.2%).³

The major highway transportation is by U.S. Route 59, U.S. Route 73, U.S. Route 159, Kansas Highway 7, Kansas Highway 9 and Kansas Highway 116.⁴

¹ <http://www.census.gov/quickfacts/table/PST045215/20005>

² U.S. Census Bureau

³ http://www.city-data.com/county/Atchison_County-KS.html

⁴ U.S. Census Bureau

Atchison Hospital (Primary Service Area) Detail Demographic Profile

ZIP	NAME	County	Population			Households		HH Avg Size	Per Capita Income 14
			YR 2014	YR 2019	Chg	YR 2014	YR 2019		
66002	Atchison	ATCHISON	13,661	13,615	-0.3%	4,967	4,949	2.5	\$19,978
66016	Cummings	ATCHISON	592	582	-1.7%	228	224	2.6	\$21,966
66023	Effingham	ATCHISON	1,151	1,156	0.4%	467	471	2.5	\$20,817
66041	Lancaster	ATCHISON	780	764	-2.1%	307	302	2.5	\$22,631
66058	Muscotah	ATCHISON	334	330	-1.2%	127	127	2.6	\$19,179
Totals			16,518	16,447	-4.8%	6,096	6,073	2.5	\$20,914

ZIP	NAME	County	Population				YR 2014		Females Age20_35
			YR 2014	Pop65+	Kids<18	GenY	Males	Females	
66002	Atchison	ATCHISON	13,661	2,158	3,916	4,333	6,587	7,074	1,511
66016	Cummings	ATCHISON	592	108	149	143	308	284	36
66023	Effingham	ATCHISON	1,151	206	317	305	593	558	74
66041	Lancaster	ATCHISON	780	147	182	206	391	389	61
66058	Muscotah	ATCHISON	334	56	85	90	172	162	25
Totals			16,518	2,675	4,649	5,077	8,051	8,467	1,707

ZIP	NAME	County	Population				Aver HH Inc 14	HH YR 2014	HH \$50K+
			White	Black	Amer In	Hisp			
66002	Atchison	ATCHISON	12,104	848	102	363	\$53,366	4,967	2,160
66016	Cummings	ATCHISON	567	11	4	4	\$57,035	228	107
66023	Effingham	ATCHISON	1,107	12	8	21	\$51,306	467	193
66041	Lancaster	ATCHISON	755	2	5	7	\$57,500	307	150
66058	Muscotah	ATCHISON	324	1	2	5	\$50,438	127	53
Totals			14,857	874	121	400	\$53,929	6,096	2,663

Source: ERSA Demographics

III. Community Health Status

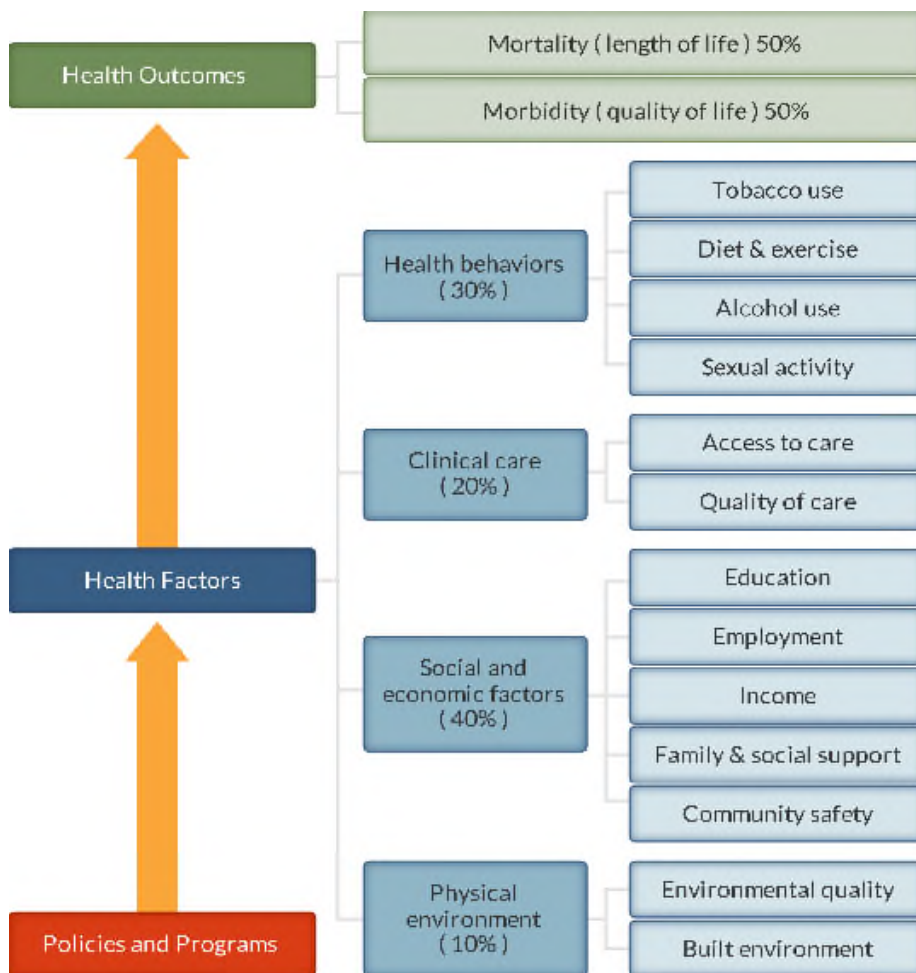
[VVV Consultants LLC]

III. Community Health Status

a) Historical Health Statistics

Health Status Profile

This section of the CHNA reviews published quantitative community health indicators and results of our recent CHNA Town Hall. To produce this profile, VVV Consultants LLC staff analyzed data from multiple sources. This analysis focuses on a set of published health indicators organized by ten areas of focus (10 tabs), results from the 2015 County Health Rankings and conversations from Town Hall primary research. **Each table reflects a Trend column, with GREEN denoting growing/high performance indicators, YELLOW denoting minimal change/average performance indicators and RED denoting declining/low performance indicators.** <Note: The Robert Wood Johnson Foundation collaborates with the University of Wisconsin Population Health Institute to release annual *County Health Rankings*. As seen below in model, these rankings are based on a number of health factors.>



County Health Rankings model ©2012 UWPHI

Secondary Research

2016 State Health Rankings for Atchison County, KS

#	KS Rank of 105 Counties	Definitions	ATCHISON CO	TREND	KS Critical Access Norm N=9
1	Health Outcomes		67	Yellow	30
2	Mortality	Length of life	46	Yellow	34
2a	Morbidity	Quality of Life	76	Red	32
2b	Health Factors		82	Red	34
3	Health Behaviors	Tobacco Use, Diet/Exercise, Alcohol Use, Sexual Activity	82	Red	42
3a	Clinical Care	Access to care / Quality of Care	57	Yellow	34
3b	Social & Economic Factors	Education, Employment, Income, Family/Social support, Community Safety	93	Red	43
3c	Physical Environment	Environmental quality	22	Green	25
http://www.countyhealthrankings.org , released 2016 KS Critical Access Norm N=9 includes the following counties: Atchison, Doniphan, Brown, Nemaha, Marshall, Pottawatomie, Jackson, Jefferson and Wabaunsee.					

When considering the state of community health, it's important to review published health data by topic area. Below is a summary of key tabs of information collected:

Tab 1 Demographic Profile

TAB	HEALTH INDICATOR	ATCHISON CO	TREND	KANSAS	KS CRITICAL ACCESS NORM N=9	SOURCE
1a	a Population estimates, July 1, 2015, (V2015)	16,398		2,911,641	12,961	People Quick Facts
1a	b Population, percent change - April 1, 2010 (estimates base) to July 1, 2015, (V2015)	-3.1		2.1	-0.4	People Quick Facts
1a	c Population, Census, April 1, 2010	16,924		2,853,118	12,933	People Quick Facts
1a	d Persons under 5 years, percent, July 1, 2014, (V2014)	6.4		6.9	6.6	People Quick Facts
1a	e Persons under 18 years, percent, July 1, 2014, (V2014)	23.4		24.9	24.8	People Quick Facts
1a	f Persons 65 years and over, percent, July 1, 2014, (V2014)	16.3		14.3	17.7	People Quick Facts
1a	g Female persons, percent, July 1, 2014, (V2014)	51.3		50.2	50.0	People Quick Facts
1a	h White alone, percent, July 1, 2014, (V2014) (a)	90.8		86.8	92.8	People Quick Facts
1a	i Black or African American alone, percent, July 1, 2014, (V2014) (a)	5.2		6.3	1.7	People Quick Facts
1a	j Hispanic or Latino, percent, July 1, 2014, (V2014) (b)	2.9		11.4	3.3	People Quick Facts
1a	k Foreign born persons, percent, 2010-2014	0.8		6.8	0.9	People Quick Facts
1a	l Language other than English spoken at home, percent of persons age 5 years+, 2010-2014	1.8		11.1	2.0	People Quick Facts
1a	m Living in same house 1 year ago, percent of persons age 1 year+, 2010-2014	85.6		83.4	88.0	People Quick Facts
1a	n People 65+ Living Alone, Percent, 2010-2014	27.5		29.0	30.1	American Community Survey

Tab 1 Demographic Profile

TAB	HEALTH INDICATOR	ATCHISON CO	TREND	KANSAS	KS CRITICAL ACCESS NORM N=9	SOURCE
1b a	Veterans, 2010-2014	1,075		204,538	989	People Quick Facts
1b b	Population per square mile, 2010	39.3		34.9	21.5	Geography Quick Facts
1b c	Violent Crime, 2016	248		280	193	County Health Rankings
1b d	Children in single-parent households, 2016	35%		25%	25%	County Health Rankings
1b e	People Living Below Poverty Level, percent, 2010-2014	18.3		13.8	12.0	American Community Survey
1b f	Children Living Below Poverty Level, percent, 2010-2014	22.7		18.5	16.5	American Community Survey
1b g	Limited access to healthy foods, 2016	8%		7%	8%	County Health Rankings
1b h	People 65+ Living Below Poverty Level, percent, 2010-2014	11.1		7.5	8.4	American Community Survey
1b i	People 65+ with Low Access to a Grocery Store, percent, 2010	3.8		NA	4.4	U.S. Department of Agriculture - Food Environment Atlas
1b j	Voter Turnout, 2012	63.1		66.8	67.9	Kansas Secretary of State

Tab 2 Economic Profile

TAB	HEALTH INDICATOR	ATCHISON CO	TREND	KANSAS	KS CRITICAL ACCESS NORM N=9	SOURCE
2a	a Households, 2010-2014	6,180		1,112,335	5,058	People Quick Facts
2a	b Median Household Income, 2010-2014	\$44,648		\$51,872	\$50,390	American Community Survey
2a	c Per capita income in past 12 months (in 2014 dollars), 2010-2014	\$22,446		\$27,367	\$24,540	People Quick Facts
2a	d Total Households with Cash Public Assistance Income, percent, 2014	2.1		2.2	1.4	American Community Survey
2a	e Housing units, July 1, 2014, (V2014)	6,947		1,248,813	5,667	People Quick Facts
2a	f Median Value of Owner-Occupied Housing Units, 2009-2013	\$85,800		\$129,400	\$105,511	People Quick Facts
2a	g Total Owner-Occupied Housing Units, 2014	72.8		67.1	76.6	People Quick Facts
2a	h Persons per household, 2010-2014	2.49		2.52	2.45	People Quick Facts
2a	i Severe Housing Problems, 2016	9%		11%	9%	County Health Rankings
2a	j Homeowner Vacancy Rate, percent, 2010-2014	1.3		2.0	2.2	American Community Survey
2a	k Renters Spending 30% or More of Household Income on Rent, percent, 2010-2014	39.8		45.8	36.0	American Community Survey

Tab 2 Economic Profile

TAB	HEALTH INDICATOR	ATCHISON CO	TREND	KANSAS	KS CRITICAL ACCESS NORM N=9	SOURCE
2b a	Total retail sales per capita, 2012	\$7,546		\$13,263	\$1,131	Business Quick Facts
2b b	All firms, 2012	925		239118	406	Business Quick Facts
2b c	Unemployment, 2016	6.50%		5.00%	4.26%	County Health Rankings
2b d	Total employment, 2013	5,750		1,150,401	3,723	Business Quick Facts
2a e	Households with No Car and Low Access to a Grocery Store, percent, 2010	2.9		NA	2.7	U.S. Department of Agriculture - Food Environment Atlas
2b f	Food Insecurity, 2016	17%		16%	14%	County Health Rankings
2a g	Grocery Store Density, 2012	0.18		NA	0.32	U.S. Department of Agriculture - Food Environment Atlas
2b h	Low-Income and Low Access to a Grocery Store, percent, 2010	7.8		NA	8.3	U.S. Department of Agriculture - Food Environment Atlas
2b i	Low-Income Persons who are SNAP Participants, percent, 2007	29.2		NA	19.1	U.S. Department of Agriculture - Food Environment Atlas
2b j	Households without a Vehicle, percent, 2010-2014	8.4		5.4	4.9	American Community Survey
2b k	Mean travel time to work (minutes), workers age 16 years+, 2010-2014	20.4		19.1	20.6	People Quick Facts
2b l	Long Commute - Driving Alone, 2016	24%		25%	26%	County Health Rankings
2b m	Workers who Walk to Work, percent, 2010-2014	6.0		2.4	3.7	American Community Survey

Tab 3 Public Schools Health Delivery Profile

Currently, school districts are providing on-site primary health screenings and basic care.

TAB	HEALTH INDICATOR	ATCHISON CO	TREND	KANSAS	KS CRITICAL ACCESS NORM N=9	SOURCE
3 a	Children Eligible for Free Lunch, 2016	51%		51%	31%	County Health Rankings
3 b	Children in Poverty, 2016	22%		27%	17%	County Health Rankings
3 c	Student-to-Teacher Ratio, 2013-2014	11.9		14.0	11.5	National Center for Education Statistics
3 d	High school graduate or higher, percent of persons age 25 years+, 2010-2014	91.8		90.0	92.9	People Quick Facts
3 e	Bachelor's degree or higher, percent of persons age 25 years+, 2010-2014	19.0		30.7	20.8	People Quick Facts

TAB 4 Maternal and Infant Health Profile

Tracking maternal and infant care patterns are vital in understanding the foundation of family health.

TAB	HEALTH INDICATOR	ATCHISON CO	TREND	KANSAS	KS CRITICAL ACCESS NORM N=9	SOURCE
4 a	Percent of Births Where Prenatal Care began in First Trimester, percent, 2012-2014	76.6		79.4	76.9	Kansas Department of Health and Environment
4 b	Percentage of Premature Births, percent, 2012-2014	7.8		8.9	8.2	Kansas Department of Health and Environment
4 c	Low Birthweight, 2016	8%		7%	6%	County Health Rankings
4 d	Percent of births Where Mother Smoked During Pregnancy, percent, 2012-2014	26.9		12.7	18.0	Kansas Department of Health and Environment
4 e	Teen Births, 2016	32		55	29	County Health Rankings
4 f	Percent of Births Occurring to Unmarried Women, percent, 2012-2014	48.8		36.5	32.1	Kansas Department of Health and Environment
4 g	Average Monthly WIC Participation per 1,000 population, 2014	24.8		22.5	18.0	Kansas Department of Health and Environment
4 h	Percent of WIC Mothers Breastfeeding Exclusively, 2014	8.1		13.2	14.9	Kansas Department of Health and Environment

TAB 4 Maternal and Infant Health Profile

Tab	Vital Statistics	ATCHISON CO	TREND	KANSAS
4 b	Total Live Births, 2010	225		40,439
4 c	Total Live Births, 2011	212		39,628
4 d	Total Live Births, 2012	204		40,304
4 e	Total Live Births, 2013	191		38,805
4 f	Total Live Births, 2014	205		39,193

TAB 5 Hospitalization/Provider Profile

Understanding provider access and disease patterns are fundamental in healthcare delivery. Listed below are several vital county statistics.

TAB	HEALTH INDICATOR	ATCHISON CO	TREND	KANSAS	KS CRITICAL ACCESS NORM N=9	SOURCE
5 a	Primary Care Physicians, 2016	2,090		4,200	2,004	County Health Rankings
5 b	Staffed Hospital Bed Ratio, 2014	1.5		3.4	2.8	Kansas Hospital Association
5 c	Percent of Births with Inadequate Birth Spacing, percent, 2012-2014	8.3		10.7	10.0	Kansas Department of Health and Environment
5 d	Preventable Hospital Stays, 2016	70		59	64	County Health Rankings
5 e	Heart Disease Hospital Admission Rate, 2011-2013	402.6		266.7	324.6	Kansas Department of Health and Environment
5 f	Congestive Heart Failure Hospitalization Rate, 2011-2013	177.9		176.8	173.6	Kansas Department of Health and Environment
5 g	Bacterial Pneumonia Hospital Admission Rate, 2011-2013	349.4		244.4	313.4	Kansas Department of Health and Environment
5 h	Chronic Obstructive Pulmonary Disease (COPD) Hospital Admission Rate, 2011-2013	187.6		123.7	196.6	Kansas Department of Health and Environment
5 i	Injury Hospital Admission Rate, 2011-2013	1,409.1		865.2	951.9	Kansas Department of Health and Environment

TAB 5 Hospitalization/Provider Profile

Kansas Hospital Association PO103 #		Atchison County IP 2016			Trend
		FFY2013	FFY2014	FFY2015	
	Total Discharges	2,064	2,060	1,866	
	Total IP Discharges-Age 0-17 Ped	92	70	87	
	Total IP Discharges-Age 18-44	225	219	170	
	Total IP Discharges-Age 45-64	471	497	409	
	Total IP Discharges-Age 65-74	324	319	326	
	Total IP Discharges-Age 75+	502	482	440	
	Psychiatric	85	80	83	
	Obstetric	187	209	190	
	Surgical %	25.8%	27.8%	24.8%	
Kansas Hospital Association PO103 #		Atchison Hospital Only			Trend
		FFY2013	FFY2014	FFY2015	
	Total Discharges	889	872	705	
	Total IP Discharges-Age 0-17 Ped	18	21	17	
	Total IP Discharges-Age 18-44	102	79	41	
	Total IP Discharges-Age 45-64	157	167	101	
	Total IP Discharges-Age 65-74	112	103	111	
	Total IP Discharges-Age 75+	278	237	215	
	Psychiatric	5	6	3	
	Obstetric	110	139	120	
	Surgical %	16.0%	20.6%	15.2%	
Kansas Hospital Association TOT223E #		FFY2013	FFY2014	FFY2015	Trend
		FFY2013	FFY2014	FFY2015	
	Emergency Market Share	86.8%	86.4%	85.2%	
	Surgery Market Share	63.4%	61.0%	56.8%	
	Observation Market Share	65.9%	47.3%	44.1%	

TAB 6 Social & Rehab Services Profile

Behavioral healthcare provides another important indicator of community health status.

TAB	HEALTH INDICATOR	ATCHISON CO	TREND	KANSAS	KS CRITICAL ACCESS NORM N=9	SOURCE
6 a	Depression: Medicare Population, percent, 2014	13.9		17.2	14.2	Centers for Medicare and Medicaid Services
6 b	Alcohol-Impaired Driving Deaths, 2016	44%		39%	37%	County Health Rankings
6 c	Poor Mental Health Days, 2016	3.2		3.3	2.9	County Health Rankings

TAB 7 Health Risk Profiles

Knowing community health risk factors and disease patterns can aid in the understanding next steps to improve health. Being overweight / obese; smoking, drinking in excess, not exercising, etc. can lead to poor health.

TAB	HEALTH INDICATOR	ATCHISON CO	TREND	KANSAS	KS CRITICAL ACCESS NORM N=9	SOURCE
7a a	Percent of Adults Tested and Diagnosed with High Cholesterol, 2013	40.9		38.1	37.0	Kansas Department of Health and Environment
7a b	Adult Obesity, 2016	30%		39%	32%	County Health Rankings
7a c	Percent of Adults Who are Binge Drinkers, 2013	19.5		15.4	17.4	Kansas Department of Health and Environment
7a d	Percent of Adults Who Currently Smoke Cigarettes, 2013	23.0		20.0	19.6	Kansas Department of Health and Environment
7a e	Percent of Adults with Diagnosed Hypertension, 2013	34.5		31.3	34.2	Kansas Department of Health and Environment
7a f	Percent of Adults with Doctor Diagnosed Arthritis, 2013	28.2		23.9	27.4	Kansas Department of Health and Environment
7a g	Physical Inactivity, 2016	28%		33%	27%	County Health Rankings
7a h	Poor or Fair Health, 2016	14%		16%	13%	County Health Rankings
7a i	Percent of Population Served Unaffected by SDWA Nitrate Violations, 2014	100.0		99.5	92.4	Kansas Department of Health and Environment
7a j	Sexually Transmitted Infections, 2016	232.0		254.4	183.4	County Health Rankings

TAB 7 Health Risk Profiles

TAB	HEALTH INDICATOR	ATCHISON CO	TREND	KANSAS	KS CRITICAL ACCESS NORM N=9	SOURCE
7b a	Rheumatoid Arthritis or Osteoarthritis: Medicare Population, percent, 2014	25.5		28.2	27.0	Centers for Medicare and Medicaid Services
7b b	Ischemic Heart Disease: Medicare Population, percent, 2014	25.3		25.6	24.5	Centers for Medicare and Medicaid Services
7b c	Diabetes: Medicare Population, percent, 2014	22.6		24.7	23.9	Centers for Medicare and Medicaid Services
7b d	Atrial Fibrillation: Medicare Population, percent, 2014	9.1		8.3	8.7	Centers for Medicare and Medicaid Services
7b e	Heart Failure: Medicare Population, percent, 2014	14.3		15.0	13.3	Centers for Medicare and Medicaid Services
7b f	COPD: Medicare Population, percent, 2014	11.6		11.1	11.9	Centers for Medicare and Medicaid Services
7b g	Atrial Fibrillation: Medicare Population, percent, 2014	9.1		8.3	8.7	Centers for Medicare and Medicaid Services
7b h	Cancer: Medicare Population, percent, 2014	6.4		7.7	7.3	Centers for Medicare and Medicaid Services
7b i	Chronic Kidney Disease: Medicare Population, percent, 2014	14.0		14.7	11.9	Centers for Medicare and Medicaid Services
7b j	Osteoporosis: Medicare Population, percent, 2014	3.5		5.7	5.4	Centers for Medicare and Medicaid Services
7b k	Asthma: Medicare Population, percent, 2014	4.0		4.1	3.6	Centers for Medicare and Medicaid Services
7b l	Stroke: Medicare Population, percent, 2014	3.0		3.2	3.0	Centers for Medicare and Medicaid Services

TAB 8 Uninsured Profiles

Based on state estimations, the number of insured is documented below. Also, the amount of charity care (last three years of free care) from area providers is trended below.

TAB	HEALTH INDICATOR	ATCHISON CO	TREND	KANSAS	KS CRITICAL ACCESS NORM N=9	SOURCE
8 a	Uninsured, 2016	13.0%		14.0%	12.8%	County Health Rankings

#	Atchison Hospital	YR13	YR14	YR15	TREND
1	Bad Debt (in thousands)	\$4,904	\$4,659	\$4,210	
2	Charity Care	\$1,119	\$703	\$1,409	

TAB 9 Mortality Profile

The leading causes of county deaths are listed below. Areas of higher than expected are so noted.

TAB	HEALTH INDICATOR	ATCHISON CO	TREND	KANSAS	KS CRITICAL ACCESS NORM N=9	SOURCE
9 a	Life Expectancy for Females, 2010	79.3		80.5	80.7	Institute for Health Metrics and Evaluation
9 b	Life Expectancy for Males, 2010	75.0		75.8	75.6	Institute for Health Metrics and Evaluation
9 c	Infant Mortality Rate, 2010-2014	6.8		6.3	7.6	Kansas Department of Health and Environment
9 d	Age-Adjusted Mortality Rate per 100,000 Population, 2012-2014	807.7		753.9	748.2	Kansas Department of Health and Environment
9 e	Age-Adjusted Years of Potential Life Lost - Traffic Injury, 2012-2014	759.4		450.3	896.7	Kansas Department of Health and Environment
9 f	Age-adjusted Cancer Mortality Rate per 100,000 population, 2012-2014	185.5		165.1	163.8	Kansas Department of Health and Environment
9 g	Age-adjusted Heart Disease Mortality Rate per 100,000 population, 2012-2014	151.4		155.9	157.7	Kansas Department of Health and Environment
9 h	Age-Adjusted Chronic Lower Respiratory Disease Mortality Rate per 100,000 Population, 2012-2014	51.2		50.1	49.5	Kansas Department of Health and Environment
9 i	Age-adjusted Traffic Injury Mortality Rate per 100,000 population, 2012-2014	15.9		12.8	22.6	Kansas Department of Health and Environment
9 j	Age-adjusted Unintentional Injuries Mortality Rate per 100,000 population, 2012-2014	53.2		40.1	41.8	Kansas Department of Health and Environment
9 k	Age-adjusted Suicide Mortality Rate per 100,000 population, 2012-2014	26.2		15.6	18.8	Kansas Department of Health and Environment

#	Causes of Death by County of Residence, Kansas Vital Statistics 2014	ATCHISON CO	%	TREND	KANSAS	%
	Total	494			70,118	
1	All Causes	183	37.0%	0.3%	25,731	36.7%
2	Major Cardiovascular Diseases	52	10.5%	-0.3%	7,619	10.9%
3	All Malignant Neoplasms	44	8.9%	1.0%	5,569	7.9%
4	Diseases of Heart	32	6.5%	-1.3%	5,462	7.8%
5	All Other Causes	29	5.9%	-0.9%	4,718	6.7%
6	Other Heart Diseases	16	3.2%	0.1%	2,233	3.2%
7	Cerebrovascular Diseases	16	3.2%	1.3%	1,341	1.9%
8	Ischemic Heart Diseases	15	3.0%	-1.2%	2,995	4.3%
9	Malignant Neoplasms of Digestive Organs	13	2.6%	0.8%	1,317	1.9%
10	Chronic Lower Respiratory Diseases	12	2.4%	0.1%	1,663	2.4%
11	Malignant Neoplasms of Respiratory and Intrathoracic Organs	12	2.4%	0.1%	1,609	2.3%

TAB 10 Preventive Health Profile

The following table reflects future health of the county. This information also is an indicator of community awareness of preventative measures.

TAB	HEALTH INDICATOR	ATCHISON CO	TREND	KANSAS	KS CRITICAL ACCESS NORM N=9	SOURCE
10 a	Access to Exercise Opportunities, 2016	65%		25%	38%	County Health Rankings
10 b	Percent of Infants Fully Immunized at 24 Months, 2014-2015	75.7		70.6	76.0	Kansas Department of Health and Environment
10 c	Percent of Adults Ages 65 Years and Older Who Were Immunized Against Influenza During the Past 12 Mo, 2013	NA		64.8	60.0	Kansas Department of Health and Environment
10 d	Percent of Adults Who Reported Consuming Fruit Less than 1 Time Per Day, 2013	47.6		41.7	42.3	Kansas Department of Health and Environment
10 e	Percent of Adults Who Reported Consuming Vegetables Less than 1 Time Per Day, 2013	23.6		22.9	23.5	Kansas Department of Health and Environment
10 f	Diabetic Monitoring, 2016	79%		80%	87%	County Health Rankings
10 g	Mammography Screening, 2016	51%		55%	59%	County Health Rankings
10 h	Percent Annual Check-Up Visit with PCP	NA		NA	NA	Not Available
10 i	Percent Annual Check-Up Visit with Dentist	NA		NA	NA	Not Available
10 j	Percent Annual Check-Up Visit with Eye Doctor	NA		NA	NA	Not Available

Community Feedback Research

For a CHNA, it is also important to gather community perspective from key stakeholders on their views of progress to address the baseline CHNA needs documented three years ago. Below are findings of this online community primary research:

Question 1—Overall Quality of Healthcare Delivery

Atchison Hospital (Primary Service Area) Atchison Co, KS N=156						
1. Three years ago, Atchison Hospital and the Atchison County Health Department completed a Community Health Needs Assessment (CHNA). This assessment identified a number of health needs for our community. Today, we are updating this assessment and would like to know how you rate the "Overall Quality" of healthcare delivery in our community?						
Answer Options	Very Good	Good	Fair	Poor	Very Poor	Valid N
Atchison County N=156	19	66	62	7	2	156
Top 2 Boxes (Very Good / Good)	54.5%					
Option C Stakeholders Round #2	732	1,590	629	79	17	3,047
Top 2 Boxes (Very Good / Good)	76.2%					

Question 5—Rating of Healthcare Services

Atchison Hospital (Primary Service Area) Atchison Co, KS N=156			
5. How would Atchison County residents rate each of the following services?	Option C Stakeholders Round #2 Bottom 2 Boxes	Atchison Co N=156	TREND
Ambulance Services	3.9%	7.7%	
Child Care	14.5%	8.4%	
Chiropractors	4.7%	0.9%	
Dentists	12.8%	2.5%	
Emergency Room	6.9%	26.0%	
Eye Doctor / Optometrist	7.6%	5.0%	
Family Planning Services	16.0%	16.9%	
Home Health	10.5%	3.7%	
Hospice	6.6%	2.8%	
Inpatient Services	3.6%	4.4%	
Mental Health Services	33.6%	33.0%	
Nursing Home	11.8%	14.5%	
Outpatient Services	3.0%	6.0%	
Pharmacy	2.5%	1.7%	
Primary Care	4.6%	5.8%	
Public Health Department	4.3%	8.8%	
School Nurse	7.1%	1.0%	
Visiting Specialists	8.3%	10.0%	

Question 7—Healthcare Services Outside of PSA

Atchison Hospital (Primary Service Area) Atchison Co, KS N=156			
7. Throughout the past two years, did you or someone you know receive healthcare services outside of Atchison County?	Option C Stakeholders Round #2 Bottom 2 Boxes	Atchison Co N=156	TREND
Yes	79.2%	76.6%	
No	13.5%	16.1%	
Don't know	7.3%	7.3%	
TOTALS	100.0%	100.0%	

Question 8—Requested Discussion Items for Town Hall Agenda

Atchison Hospital (Primary Service Area) Atchison Co, KS N=156			
8. Are there any other health needs from the list below that need to be discussed at our upcoming CHNA Town Hall meeting?	Option C Stakeholders Round #2 Bottom 2 Boxes	Atchison Co N=156	TREND
Abuse / Violence	4.8%	6.2%	
Alcohol	5.0%	5.0%	
Cancer	5.0%	3.3%	
Diabetes	4.9%	6.2%	
Drugs / Substance Abuse	7.8%	8.4%	
Family Planning	2.9%	2.4%	
Heart Disease	3.7%	3.0%	
Lead Exposure	0.7%	1.1%	
Mental Illness	8.8%	7.6%	
Nutrition	5.0%	6.0%	
Obesity	7.8%	7.6%	
Ozone	0.7%	0.5%	
Physical Exercise	5.8%	6.2%	
Poverty	5.3%	5.8%	
Respiratory Disease	2.2%	1.6%	
Sexual Transmitted Diseases	2.3%	3.7%	
Suicide	4.6%	2.6%	
Teen Pregnancy	3.8%	5.0%	
Tobacco Use	4.1%	4.1%	
Vaccinations	4.1%	2.7%	
Water Quality	3.3%	4.3%	
Wellness Education	5.9%	5.1%	
Some Other Need (please specify below)	1.4%	1.5%	
TOTAL	100.0%	100.0%	

IV. Inventory of Community Health Resources

[VVV Consultants LLC]

Inventory of Health Services Atchison County, KS				
Cat	Healthcare Services Offered in County: Yes / No	Hospital	Health Dept	Other
Clinic	Primary Care	yes	yes	yes
Hosp	Alzheimer Center	no	no	yes
Hosp	Ambulatory Surgery Centers	yes	no	no
Hosp	Arthritis Treatment Center	no	no	no
Hosp	Bariatric / Weight Control Services	no	no	no
Hosp	Birthing / LDR / LDRP Room	yes	no	no
Hosp	Breast Cancer	no	no	no
Hosp	Burn Care	no	no	no
Hosp	Cardiac Rehabilitation	yes	no	no
Hosp	Cardiac Surgery	no	no	no
Hosp	Cardiology Services	yes	no	no
Hosp	Case Management	yes	no	no
Hosp	Chaplaincy / Pastoral Care Services	yes	yes	yes
Hosp	Chemotherapy	no	no	no
Hosp	Colonoscopy	yes	no	no
Hosp	Crisis Prevention	yes	yes	yes
Hosp	CT Scanner	yes	no	no
Hosp	Diagnostic Radioisotope Facility	yes	no	no
Hosp	Diagnostic / Invasive Catheterization	no	no	no
Hosp	Electron Beam Computed Tomography (EBCT)	no	no	no
Hosp	Enrollment Assistance Services	yes	yes	yes
Hosp	Extracorporeal Shock Wave Lithotripter (ESWL)	no	no	no
Hosp	Fertility Clinic	no	no	no
Hosp	FullField Digital Mammography (FFDM)	yes	no	no
Hosp	Genetic Testing / Counseling	no	no	no
Hosp	Geriatric Services	no	yes	yes
Hosp	Heart	no	no	no
Hosp	Hemodialysis	no	no	no
Hosp	HIV / AIDS Services	no	no	no
Hosp	Image-Guided Radiation Therapy (IGRT)	no	no	no
Hosp	Inpatient Acute Care - Hospital Services	yes	no	no
Hosp	Intensity-Modulated Radiation Therapy (IMRT) 161	no	no	no
Hosp	Intensive Care Unit	yes	no	no
Hosp	Intermediate Care Unit	no	no	no
Hosp	Interventional Cardiac Catheterization	no	no	no
Hosp	Isolation room	yes	no	no
Hosp	Kidney	no	no	no
Hosp	Liver	no	no	no
Hosp	Lung	no	no	no
Hosp	Magnetic Resonance Imaging (MRI)	yes	no	no
Hosp	Mammograms	yes	no	no
Hosp	Mobile Health Services	no	no	no
Hosp	Multislice Spiral Computed Tomography (<64 slice CT)	Yes	no	no
Hosp	Multislice Spiral Computed Tomography (<64+ slice CT)	no	no	no
Hosp	Neonatal	no	no	no
Hosp	Neurological services	no	no	no
Hosp	Obstetrics	yes	no	no
Hosp	Occupational Health Services	yes	no	no
Hosp	Oncology Services	no	no	no
Hosp	Orthopedic Services	yes	no	no
Hosp	Outpatient Surgery	yes	no	no
Hosp	Pain Management	no	no	no
Hosp	Palliative Care Program	no	yes	yes
Hosp	Pediatric	yes	yes	yes
Hosp	Physical Rehabilitation	yes	no	yes
Hosp	Positron Emission Tomography (PET)	no	no	no
Hosp	Positron Emission Tomography / CT (PET / CT)	yes	no	no

Inventory of Health Services Atchison County, KS				
Cat	Healthcare Services Offered in County: Yes / No	Hospital	Health Dept	Other
Hosp	Psychiatric Services	no	no	yes
Hosp	Radiology, Diagnostic	yes	no	no
Hosp	Radiology, Therapeutic	yes	no	no
Hosp	Reproductive Health	no	no	yes
Hosp	Robotic Surgery	no	no	no
Hosp	Shaped Beam Radiation System 161	no	no	no
Hosp	Single Photon Emission Computerized Tomography	no	no	no
Hosp	Sleep Center	yes	no	no
Hosp	Social Work Services	yes	yes	yes
Hosp	Sports Medicine	no	no	yes
Hosp	Stereotactic Radiosurgery	no	no	no
Hosp	Swing Bed Services	yes	no	yes
Hosp	Transplant Services	no	no	no
Hosp	Trauma Center-Level IV	no	no	no
Hosp	Ultrasound	yes	no	yes
Hosp	Women's Health Services	yes	yes	yes
Hosp	Wound Care	no	no	yes
SR	Adult Day Care Program	no	no	yes
SR	Assisted Living	no	no	yes
SR	Home Health Services	yes	yes	yes
SR	Hospice	yes	yes	yes
SR	LongTerm Care	no	no	yes
SR	Nursing Home Services	no	no	yes
SR	Retirement Housing	no	no	yes
SR	Skilled Nursing Care	yes	no	yes
ER	Emergency Services	yes	no	no
ER	Urgent Care Center	no	no	no
ER	Ambulance Services	no	no	yes
SERV	Alcoholism-Drug Abuse	no	no	yes
SERV	Blood Donor Center	no	no	no
SERV	Chiropractic Services	no	no	yes
SERV	Complementary Medicine Services	no	no	yes
SERV	Dental Services	no	no	yes
SERV	Fitness Center	no	no	yes
SERV	Health Education Classes	yes	yes	yes
SERV	Health Fair (Annual)	yes	yes	yes
SERV	Health Information Center	yes	yes	yes
SERV	Health Screenings	yes	yes	yes
SERV	Meals on Wheels	no	no	yes
SERV	Nutrition Programs	no	no	yes
SERV	Patient Education Center	no	no	no
SERV	Support Groups	yes	yes	yes
SERV	Teen Outreach Services	no	no	yes
SERV	Tobacco Treatment / Cessation Program	yes	no	yes
SERV	Transportation to Health Facilities	no	no	yes
SERV	Wellness Program	yes	yes	yes

**Providers Delivering Care in Atchison County, KS
Atchison Hospital - Primary Service Area**

# of FTE Providers Working in County	FTE Physicians		FTE Allied Staff
	PSA-Based DRs	Visting DRs*	PSA-Based PA / NP
Primary Care:			
Family Practice	7.0		5.0
Internal Medicine/Geriatrician	2.0		
Obstetrics/Gynecology		1.0	
Pediatrics			
Medicine Specialists:			
Allergy/Immunology			
Cardiology		30.0	
Dermatology			
Endocrinology		1.0	
Gastroenterology		1.0	
Oncology/Radiology		1.0	
Infectious Diseases			
Nephrology		1.0	
Neurology		2.0	
Psychiatry			
Pulmonary		1.0	
Rheumatology		1.0	
Surgery Specialists:			
General Surgery/Colon/Oral	2.0	1.0	1.0
Neurosurgery		1.0	
Ophthalmology	1.0	1.0	
Orthopedics	1.0	1.0	1.0
Otolaryngology		1.0	
Plastic/Reconstructive			
Thoracic/Cardiovascular/Vascular		1.0	
Urology		1.0	
Hospital Based:			
Anesthesia/Pain	1.0		2.0
Emergency	3.0		6.0
Radiology	2.0	2.0	
Pathology		1.0	
Hospitalist	1.0		
Neonatal/Perinatal			
Physical Medicine/Rehab			
Occupational Medicine			
Podiatry		2.0	
Chiropractor		3.0	
Optometrist			
Dentist		2.0	
TOTALS	20.0	56.0	15.0

* Total # of FTE Specialists serving community who office outside PSA.

Visiting Specialists to Atchison Hospital (Atchison, KS)

<i>Specialty</i>	<i>Physician Name/Group</i>	<i>Office Location</i>	<i>Schedule</i>	<i>Annual Days</i>	<i>Location of Outreach Clinic</i>
Cardiology	Heartland Cardiovascular Consultants	Kansas City, KS, St. Joseph, MO	Tuesday/Friday, Mon/Wed/Fri	260	Suite 106B, 820 Raven Hill Dr Suite 103, 820 Raven Hill Dr
Gastroenterology	Kansas Medical	Topeka, KS	2nd Tuesday	12	Suite 105, 820 Raven Hill Dr
Gynecology	Heartland Women's Health	St. Joseph, MO	Two Mondays/Month	24	Suite 109, 820 Raven Hill Dr
Hematology / Oncology	St. Joseph Oncology	St. Joseph, MO	Every Wednesday	52	104 N 6th, Atchison, KS
Neurology	Fariz Habib, Heartland Neurology	Leavenworth, KS, St. Joseph, MO	Every Tuesday, 3rd Monday	52 12	Suite 105, 820 Raven Hill Dr Suite 103, 820 Raven Hill Dr
Ophthalmology	John Reifschneider, DO	Leavenworth, KS	3rd Thursday	12	800 Raven Hill Dr
Podiatry	Shannon Engel, DPM	St. Joseph, MO	1st and 3rd Wednesday	24	Suite 109, 820 Raven Hill Dr
Pulmonary	Randall Mitchem, DO	St. Joseph, MO	4th Monday	12	Suite 103, 820 Raven Hill Dr
Rheumatology	Stephen Ruhlman, MD	Overland Park, KS	1st Wednesday	12	Suite 105, 820 Raven Hill Dr
Urology	Mark Lierz, MD	St. Joseph, MO	Every Tuesday	12	Suite 105, 820 Raven Hill Dr

General Online Healthcare Resources

Doctors and Dentists--General

[AMA Physician Select: Online Doctor Finder](#) (American Medical Association) [DocFinder](#) (Administrators in Medicine) [Find a Dentist](#) (Academy of General Dentistry) [Find a Dentist: ADA Member Directory](#) (American Dental Association) [Physician Compare](#) (Centers for Medicare & Medicaid Services)

Hospitals and Clinics--General

[Find a Health Center](#) (Health Resources and Services Administration) [Find a Provider: TRICARE Provider Directories](#) (TRICARE Management Activity) [Hospital Quality Compare](#) (Centers for Medicare & Medicaid Services)

Doctors and Dentists--Specialists

[ACOG's Physician Directory](#) (American College of Obstetricians and Gynecologists) [ACR: Geographic Membership Directory](#) (American College of Rheumatology) [American College of Surgeons Membership Directory](#) (American College of Surgeons) [American Osteopathic Association D.O. Database](#) (American Osteopathic Association) [ASGE: Find a Doctor](#) (American Society for Gastrointestinal Endoscopy) [Cancer Genetics Services Directory](#) (National Cancer Institute) [Child and Adolescent Psychiatrist Finder](#) (American Academy of Child and Adolescent Psychiatry) [Dystonia: Find a Health Care Professional](#) (Dystonia Medical Research Foundation) [Expert Locator: Immunologists](#) (Jeffrey Modell Foundation) [Find a Dermatologic Surgeon](#) (American Society for Dermatologic Surgery) [Find a Dermatologist](#) (American Academy of Dermatology) [Find a Gastroenterologist](#) (American College of Gastroenterology) [Find a Gynecologic Oncologist](#) (Society of Gynecologic Oncologists) [Find a Hand Surgeon](#) (American Society for Surgery of the Hand) [Find a Hematologist](#) (American Society of Hematology) [Find a Neurologist](#) (American Academy of Neurology) [Find a Pediatric Dentist](#) (American Academy of Pediatric Dentistry) [Find a Pediatrician or Pediatric Specialist](#) (American Academy of Pediatrics) [Find a Periodontist](#) (American Academy of Periodontology) [Find a Physical Medicine & Rehabilitation Physician](#) (American Academy of Physical Medicine and Rehabilitation) [Find a Plastic Surgeon](#) (American Society of Plastic Surgeons) [Find a Podiatrist](#) (American Podiatric Medical Association) [Find a Thyroid Specialist](#) (American Thyroid Association) [Find a Urologist](#) (American Urological Association) [Find an ACFAS Physician](#) (American College of Foot and Ankle Surgeons) [Find an Allergist/Immunologist: Search](#) (American Academy of Allergy, Asthma, and Immunology) [Find an Endocrinologist](#) (Hormone Health Network) [Find an Eye M.D.](#) (American Academy of Ophthalmology) [Find an Interventional Radiologist](#) (Society of Interventional Radiology) [Find an Oncologist](#) (American Society of Clinical Oncology) [Find an Oral and Maxillofacial Surgeon](#) (American Association of Oral and Maxillofacial Surgeons) [Find an Orthopaedic Foot and Ankle MD](#) (American Orthopaedic Foot and Ankle Society) [Find an Otolaryngologist \(ENT\)](#) (American Academy of Otolaryngology--Head and Neck Surgery) [Finding an Eye Care Professional](#) (National Eye Institute) [GI Locator Service](#) (American Gastroenterological Association)

Other Healthcare Providers

[AMTA's Find a Massage Therapist](#) (American Massage Therapy Association) [Cancer Genetics Services Directory](#) (National Cancer Institute) [Find a Diabetes Educator](#) (American Association of Diabetes Educators) [Find a Genetic Counselor](#) (National Society of Genetic Counselors) [Find a Midwife](#) (American College of Nurse-Midwives) [Find a Nurse Practitioner](#) (American Academy of Nurse Practitioners) [Find a Physical Therapist](#) (American Physical Therapy Association) [Find a Professional: Online Directory of Audiology and Speech-Language Pathology Programs](#) (American Speech-Language-Hearing Association) [Find a Registered Dietitian](#) (Academy of Nutrition and Dietetics) [Find a Therapist](#) (Anxiety Disorders Association of America) [Find an Audiologist](#) (American Academy of Audiology) [Manual Lymphatic Drainage Therapists](#) (National Lymphedema Network) [National Register of Health Service Providers in Psychology](#) (National Register of Health Service Providers in Psychology) [NCCAOM: Find Nationally Certified Practitioners](#) (National Certification Commission for Acupuncture and Oriental Medicine) [Search for an Emergency Contraception Provider in the United States](#) (Princeton University, Office of Population Research)

Hospitals and Clinics--Specialized

[Accredited Birth Centers](#) (Commission for the Accreditation of Birth Centers) [Alzheimer's Disease Research Centers](#) (National Institute on Aging) [Cystic Fibrosis Foundation: Find a Chapter](#) (Cystic Fibrosis Foundation) [Cystic Fibrosis Foundation: Find an Accredited Care Center](#) (Cystic Fibrosis Foundation) [Dialysis Facility Compare](#) (Centers for Medicare & Medicaid Services) [FDA Certified Mammography Facilities](#) (Food and Drug Administration) [Find a Free Clinic](#) (National Association of Free Clinics) [Find an Indian Health Service Facility](#) (Indian Health Service) [Find Treatment Centers](#) (American Cancer Society) [Genetics Clinic Directory Search](#) (University of Washington) [Locate a Sleep Center in the United States by Zip Code](#) (American Academy of Sleep Medicine) [MDA ALS Centers](#) (Muscular Dystrophy Association) [Mental Health Services Locator](#) (Substance Abuse and Mental Health Services Administration) [NCI Designated Cancer Centers](#) (National Cancer Institute) [Neurofibromatosis Specialists](#) (Children's Tumor Foundation) [Post-Polio Directory 2011: Post-Polio Clinics, Health Professionals, Support Groups](#) (Post-Polio Health International including International Ventilator Users Network) [Spina Bifida Clinic Directory](#) (Spina Bifida Association of America) [Substance Abuse Treatment Facility Locator](#) (Substance Abuse and Mental Health Services Administration) [Transplant Center Search Form](#) (BMT InfoNet) [U.S. NMDP Transplant Centers](#) (National Marrow Donor Program) [VA Health Care Facilities Locator & Directory](#) (Veterans Health Administration) [Where to Donate Blood](#) (AABB) [Where to Donate Cord Blood](#) (National Marrow Donor Program)

Other Healthcare Facilities and Services

[Alzheimer's Disease Resource Locator](#) (Fisher Center for Alzheimer's Research Foundation) [American College of Radiology Accredited Facility Search](#) (American College of Radiology) [APA District Branch / State Association Directory](#) (American Psychiatric Association) [Directory of Organizations \(Deafness and Communication Disorders\)](#) (National Institute on Deafness and Other Communication Disorders) [Dog Guide Schools in the United States](#) (American Foundation for the Blind) [Eldercare Locator](#) (Dept. of Health and Human Services) [Find a Hospice or Palliative Care Program](#) (National Hospice and Palliative Care Organization) [Find Services \(for People with Vision Loss\)](#) (American Foundation for the Blind) [Find Urgent Care Centers by State](#) (Urgent Care Association of America) [Genetic Testing Laboratory Directory](#) (University of Washington) [Home Health Compare](#) (Centers for Medicare & Medicaid Services) [Medicare: Helpful Contacts](#) (Centers for Medicare & Medicaid Services) [Muscular Dystrophy Association Clinics and Services](#) (Muscular Dystrophy Association) [National Foster Care and Adoption Directory Search](#) (Children's Bureau) [Nursing Home Compare](#) (Centers for Medicare & Medicaid Services) [Organizations That Offer Support Services](#) (National Cancer Institute) [Poison Control Centers](#) (American Association of Poison Control Centers) [Resources and Information for Parents about Braille](#) (American Foundation for the Blind) [State-Based Physical Activity Program Directory](#) (Centers for Disease Control and Prevention) [TSA Chapters in the USA](#) (Tourette Syndrome Association) [Violence against Women: Resources by State](#) (Dept. of Health and Human Services, Office on Women's Health) [Where to Find Hair Loss Accessories and Breast Cancer Products](#) (American Cancer Society)

SOURCE: MedlinePlus provides links to directories to help you find libraries, health professionals, services and facilities. NLM does not endorse or recommend the organizations that produce these directories, nor the individuals or organizations that are included in the directories.

Atchison County, KS Area Health Services

Emergency Numbers

Police/Sheriff	911
Fire	911
Ambulance	911

Non-Emergency Numbers

Atchison County Sheriff	913-367-0216
Atchison County Ambulance	913-833-4025

Municipal Non-Emergency Numbers

	Police/Sheriff	Fire
Atchison	913-367-4323	913-367-4329
Cummings	913-367-4323	913-367-4329
Effingham	913-367-4323	913-367-4329
Lancaster	913-367-4323	913-367-4329
Muscotah	913-367-4323	913-872-3222

Other Emergency Numbers

Kansas Child/Adult Abuse and Neglect Hotline

1-800-922-5330

www.dcf.ks.gov/services

Domestic Violence Hotline

1-800-799-7233

www.ndvh.org

Emergency Management (Topeka)

785-274-1409

www.accesskansas.org/kdem

Federal Bureau of Investigation

1-866-483-5137

www.fbi.gov/congress/congress01/caruso100301.htm

Kansas Arson/Crime Hotline

1-800-KS-CRIME 800-572-1763

www.accesskansas.org/kbi

Kansas Bureau of Investigation (Topeka)

785-296-8200

www.accesskansas.org/kbi

Kansas Crisis Hotline (Domestic Violence/Sexual Assault) 1-888-END-ABUSE

www.kcsdv.org

Kansas Road Conditions

1-866-511-KDOT 511 www.ksdot.org

Poison Control Center

1-800-222-1222

www.aapcc.org

Suicide Prevention Hotline

1-800-SUICIDE

www.hopeline.com

1-800-273-TALK

www.suicidepreventionlifeline.com

Toxic Chemical and Oil Spills

1-800-424-8802

www.epa.gov/region02/contact.htm

Hospitals / Health Services

Atchison Hospital

800 Raven Hill Drive (Atchison)

913-367-2131 www.atchisonhospital.org

NEK Multi County Health Department/Atchison County Health Department

616 Commercial Street (Atchison)

913-367-5152

<http://www.atchisoncountyks.org/index.aspx?NID=18>

Mental Health

All Faith Counseling Center

104 North 6th Street, Suite 7 (Atchison)

913-367-0105 www.afecweb.org

Atchison Counseling Service

107 North 6th Street #4 (Atchison)

913-367-2002

Guidance Center

201 Main Street (Atchison)

913-367-1593 www.theguidance-ctr.org

Kerry A. Marvin

710 Parallel Street (Atchison)

913-367-5419

Medical Professionals

Chiropractors

Atchison Chiropractic Clinic

1500 Main Street (Atchison)

913-367-4441

ChiroHealthCare

940 Commercial (Atchison)

913-367-3963 www.chcchartered.com

Koenen Chiropractic Clinic

522 Commercial (Atchison)
913-367-5371

Stephen W. Wheatley

104 North Sixth Street Suite F
(Atchison)
913-367-2269

Trusted Care Chiropractic

310 Commercial (Atchison)
913-426-3913

Clinics**Atchison Community Health Clinic**

1412 North 2nd Street (Atchison)
913-367-4879 www.achc-ks.org

Atchison Family Practice Clinic

810 Ravenhill Drive (Atchison)
913-367-7300

Atchison Family Medicine

820 Ravenhill Drive (Atchison)
913-367-1623

Specialty Clinic**Atchison Internal Medicine Clinic**

810 Ravenhill Drive (Atchison)
367-7300

Wilkinson Orthopedics

820 Ravenhill Drive (Atchison)
913-674-2380

Surgical Services of Atchison

820 Ravenhill Drive (Atchison)
913-367-5496

Mid-America Cardiology (KU Medical)

820 Ravenhill Drive (Atchison)
913-367-6227

**Heartland Cardiovascular
Consultants**

820 Ravenhill Drive (Atchison)
913-367-4664

Dentists**Atchison Dental Associates**

111 North 5th Street (Atchison)
913-367-0212 www.atchisondental.com

Heartland Dental Group

104 North 6th Street (Atchison)
913-367-2245

John Dolenz

817 Santa Fe Street (Atchison)
913-367-7270

**Northwest Missouri Oral &
Maxillofacial Surgery**

110 South 6th Street (Atchison)
913-367-3400 *Donald L. Gossett*

Paolillo & Jungbluth

1642 Main Street (Atchison)
913-367-7625

Oltjen Orthodontics

110 South 6th Street (Atchison)
913-367-2798 www.oltjenbraces.com

Stephanie C. Vandyne

413 South 10th Street (Atchison)
913-367-0203 www.vandyndental.com

Optometrists**Atchison Eye Center**

727 Commercial (Atchison)
913-367-4989

Eye Specialists of Atchison

605 Commercial Street (Atchison)
913-367-4451

Paul Moccia

605 Commercial (Atchison)
913-367-2319

Pharmacies

CVS Pharmacy

400 South 10th Street (Atchison)
913-367-1518

Kex Rx

807 Main Street (Atchison)
913-367-5252

Wal-Mart Pharmacy

101 North 4th Street (Atchison)
913-367-6142

Physicians and Health Care Providers

Atchison Internal Medicine and Family Practice Clinic

810 Raven Hill Drive (Atchison)
913-367-7300 *Michael P. Jones, M.D.*
Dina J. Seibert, D.O., Jon M. Seibert,
M.D. Jessica A. Stone, M.D. Ryan M.
Thomas M.D., McGarrett Groth, DO

Atchison Family Medicine

820 Ravenhill Drive (Atchison)
913-367-1623 *John R. Eplee, M.D.,*
Chad Johanning, M.D.

Key Rehabilitation Incorporated

1637 Riley Street (Atchison)
913-367-4037

Other Health Services

General Health Services

Atchison County Health Department

616 Commercial Street (Atchison)
913-367-5152

<http://www.atchisoncountyks.org/index.aspx?NID=18>

Assisted Living/Nursing Homes/TLC

Atchison Senior Village

1419 North 6th Street (Atchison)
913-367-1905

The Gran Villas of Atchison

1635 Riley Street (Atchison)
913-367-2077

Mall Towers

103 S. 7th Street (Atchison)
913-367-3323

Medicalodges

1637 Riley Street (Atchison)
913-367-6066

Santa Fe Place Apartments

807 Santa Fe Street (Atchison)

Trinity Place Senior Residences

600 North 9th Street (Atchison)
913-367-1185

Vintage Park at Atchison

1301 North Fourth Street (Atchison)
913-367-2655

www.vintageparkatchison.com

Diabetes Arriva Medical

1-800-375-5137

Diabetes Care Club

1-888-395-6009

**Disability Services American
Disability Group**
1-877-790-8899

**Kansas Department for Aging and
Disability Services**
1-800-432-3535
www.kdads.ks.gov

**Domestic/Family Violence
Child/Adult Abuse Hotline**
1-800-922-5330
www.dcf.ks.gov/services

DOVES-Atchison
913-367-0365
www.dovesatchisonks.org

Family Crisis Center (Great Bend)
Hotline: 620-792-1885 Business Line:
620-793-1965

Kurth Law Office
304 Commercial (Atchison)
913-367-2681

Kansas Crisis Hotline
Manhattan 785-539-7935

**Sexual Assault/Domestic Violence
Center**
(Hutchinson) Hotline: 1-800-701-3630
Business Line: 620-663-2522

Health and Fitness Centers

Body and Soul Nutrition
729 Commercial Street (Atchison)
913-367-4199

Curves For Women
509 1/2 Commercial Street (Atchison)
913-367-6013

Herbal Life Independent District
901 North 7th Street (Atchison)
913-367-7393

Snap Fitness
409 Commercial Street (Atchison)
913-367-1511

YMCA
321 Commercial Street (Atchison)
913-367-4948 www.kansascityymca.org

Home Health/Hospice

**Atchison Hospital Home Health/
Hospice**
1301 North 3rd (Atchison)
913-367-6626

Massage Therapists

Sunsetters of Atchison
516 Commercial Street (Atchison)
913-367-6262

Medical Equipment and Supplies

**Atchison Home Health Equipment
Incorporated**
708 Commercial Street (Atchison)
913-367-4099

School Nurses

ACES
201 Division Street (Atchison)
913-367-3503

Atchison Child Care Association
1326 Kansas Avenue (Atchison)
913-367-6441

Atchison Public Schools – USD 409

Elementary School K-2
825 North 17th Street (Atchison)
913-367-1161
Elementary School 3-5
825 North 17th Street (Atchison)
913-367-3787
Middle School
301 North 5th (Atchison)
913-367-5363
High School
1500 West Riley (Atchison)
913-367-4162
Alternative School
215 North 8th (Atchison)
913-360-6540
www.usd409.net

**Atchison County Community Schools
– USD 377**

Effingham, KS
913-833-5050
www.usd377.org

Maur Hill-Mount Academy

1000 Green Street (Atchison)
913-367-5482
www.maurhillmountacademy.com

Trinity Lutheran School

611 North 8th Street (Atchison)
913-367-4763
www.tlsatchison.org

Senior Services**Project Concern**

504 Kansas Avenue (Atchison)
913-367-4655

Shepherd's Center

302 North 5th Street (Atchison)
913-367-0512

Veterinary Services**Atchison Animal Clinic**

908 Commercial (Atchison)
913-367-0427

Cedar Ridge Veterinary Clinic

12047 US Highway 73 (Atchison)
913-367-3600
www.cedarridgeveterinaryclinic.com

Westside Veterinary Hospital

17014 286th Road (Atchison)
913-367-0456

**Local Government, Community,
and Social Services****Adult Protection****Adult Protective Services (SRS)**

1-800-922-5330
www.dcf.ks.gov/services

Elder Abuse Hotline

1-800-842-0078
www.elderabusecenter.org

**Kansas Department for Children and
Families**

1-800-922-5330

Alcohol and Drug Treatment**Alcohol and Drug Abuse Services**

1-800-586-3690
www.dcf.ks.gov/services

**Alcohol Detoxification 24-Hour
Helpline**

1-877-403-3387
www.ACenterForRecovery.com

Center for Recovery

1-877-403-6236

G&G Addiction Treatment Center 1-866-439-1807

Heartland Regional Alcohol & Drug Assessment Center
1-913-789-0951
www.hradac.com

Recovery Services Guidance Center
201 Main Street (Atchison)
913-367-1593

Road Less Traveled
1-866-486-1812

Seabrook House
1-800-579-0377

The Treatment Center
1-888-433-9869

Valley Hope Alcohol and Drug Treatment Center
1816 N. 2nd Street (Atchison)
1-913-367-1618
www.valleyhope.org

Child Protection

Kansas Department for Children and Families– i.e. PROTECTION REPORT CENTER FOR ABUSE
1-800-922-5330 Available 24 hours/7 days per week – including holidays

Children and Youth

All Faith Counseling Center
104 North 6th Street, Suite 7 (Atchison)
913-367-0105 www.afccweb.org

Children's Alliance
627 SW Topeka Boulevard (Topeka)
785-235-5437 www.childally.org

Guidance Center
201 Main Street (Atchison)
913-367-1593 www.theguidance-ctr.org

Kansas Children's Service League
1-800-332-6378
www.kcsl.org

Day Care – Adults

Atchison Senior Village
1419 North 6th (Atchison)
913-367-1905

The Gran Villas of Atchison
1635 Riley Street (Atchison)
913-367-2077

Medicalodges
1637 Riley Street (Atchison)
913-367-6066

Vintage Park At Atchison
1301 North 4th Street (Atchison)
913-367-2655

Day Care – Children

Atchison Child Care Association
1326 Kansas Avenue (Atchison)
913-367-6441 www.atchchildcare.org

Strawberry Hill
1400 North 2nd Street (Atchison)
913-367-6120

Extension Office
Atchison County Extension Office
405 Main Street (Effingham)
785-833-5450

Funeral Homes

Arensberg Pruett Funeral Home
208 North 5 (Atchison)
913-367-6403

Becker-Dyer-Stanton Funeral Home Incorporated
800 Kansas (Atchison)
913-367-6543

Head Start
NEK Cap Head Start Center
751 South 8th Street (Atchison)
913-367-7848

Legal Services

Campbell Law Office
107 North 6th Street, Suite 5 (Atchison)
913-367-9900
www.campbelllawofficepa.com

Garrity & Kuckelman
414 North 5th Street (Atchison)
913-367-2008

Henderson Law Office
627 Commercial (Atchison)
913-367-1912 www.pehlaw.com

Kurth Law Office
304 Commercial (Atchison)
913-367-2681

J. David Farris Law Offices
110 North 5th Street (Atchison)
913-367-2424

John W. Fresh
104 North 6th Street (Atchison)
913-367-0850

Kansas Legal Services
1500 Community Drive (Seneca)
913-367-4266

Larry R. Mears
104 North Sixth (Atchison)
913-367-0850

Leonard Buddenbohm
107 North 6th Street (Atchison)
913-367-5246

Rex Lane
P.O. Box 109 (Atchison)
913-367-4233

Ternent Law Office
P.O. Box 396 (Atchison)
913-367-1790

Werring Law Office
101 South 5th Street (Atchison)
913-367-4069

Libraries, Parks and Recreation

Atchison County Park
Grasshopper Township (Atchison)

Atchison Library
401 Kansas Avenue (Atchison)
913-367-1902

Atchison Lions Pool
1201 Commercial Street (Atchison)
913-367-1018

Jackson Park
(Atchison)

Pregnancy Services
Adoption is a Choice
1-877-524-5614

Adoption Network
1-888-281-8054

Adoption Spacebook
1-866-881-4376

Graceful Adoptions
1-888-896-7787

Kansas Children's Service League

1-877-530-5275

www.kcsl.org**Public Information****Atchison Chamber of Commerce**

200 South 10th Street (Atchison)

913-367-2427

Rape Domestic Violence and Rape Hotline

1-888-874-1499

DOVES

913-367-0365

www.dovesatchisonkb.org**Family Crisis Center**

1806 12th Street (Great Bend)

620-793-1885

Kansas Crisis Hotline

Manhattan 785-539-7935

1-800-727-2785

Red Cross**American Red Cross**

504 1/2 Kansas Avenue (Atchison)

913-367-5355

Social Security**Social Security Administration**

1-800-772-1213 1-800-325-0778

www.ssa.gov**Support Groups****Successful Dreams Support Center**

2700 Morton Avenue (Parsons)

913-423-3899

Transportation**Amelia Earhart Airport**

(Atchison)

913-367-5560

Strafuss Airport

(Effingham)

State and National Information, Services, Support**Adult Protection****Adult Protection Services**

1-800-922-5330

Domestic Violence and Sexual Assault (DVACK)

1-800-874-1499

www.dvack.org**Elder Abuse Hotline**

1-800-842-0078

www.elderabusecenter.org**Elder and Nursing Home Abuse Legal**www.resource4nursinghomeabuse.com/index.html**Kansas Coalition Against Sexual and Domestic Violence 1-888-END-ABUSE (363-2287)**www.kcsdv.org/ksresources.html**Kansas Department on Aging Adult Care Complaint Program**

1-800-842-0078

National Center on Elder Abuse

(Administration on Aging)

www.ncea.gov/NCEAroot/Main_Site?Find_Help/Help_Hotline.aspx

National Domestic Violence Hotline
1-800-799-SAFE (799-7233)
1-800-787-3224 (TTY) www.ndvh.org

National Sexual Assault Hotline
1-800-994-9662 1-888-220-5416 (TTY)
www.4woman.gov/faq/sexualassault.htm

National Suicide Prevention Lifeline
1-800-273-8255

Poison Center
1-800-222-1222

**Sexual Assault and Domestic
Violence Crisis Line**
1-800-701-3630

Department for Children and Families
1-888-369-4777 (HAYS)
www.srskansas.org

Suicide Prevention Helpline
785-841-2345

**Alcohol and Drug Treatment
Programs**

A 1 A Detox Treatment
1-800-757-0771

AAAAAH
1-800-993-3869

Abandon A Addiction
1-800-405-4810

Able Detox-Rehab Treatment
1-800-577-2481 (NATIONAL)

Abuse Addiction Agency
1-800-861-1768
www.thewatershed.com

**AIC (Assessment Information
Classes)**
1-888-764-5510

Al-Anon Family Group
1-888-4AL-ANON (425-2666)
www.al-anon.alateen.org

Alcohol and Drug Abuse Hotline
1-800-ALCOHOL

Alcohol and Drug Abuse Services
1-800-586-3690
www.srskansas.org/services/alc-drug_assess.htm

**Alcohol and Drug Addiction
Treatment Programs**
1-800-510-9435

Alcohol and Drug Helpline
1-800-821-4357

**Alcoholism/Drug Addiction
Treatment Center**
1-800-477-3447

**Kansas Alcohol and Drug Abuse
Services Hotline**
1-800-586-3690
www.srskansas.org/services/alc-drug_assess.htm

Mothers Against Drunk Driving
1-800-GET-MADD (438-6233)
www.madd.org

**National Council on Alcoholism and
Drug Dependence, Inc.**
1-800-NCA-CALL (622-2255)
www.ncadd.org

Recovery Connection
www.recoveryconnection.org

Regional Prevention Centers of Kansas

1-800-757-2180
www.smokyhillfoundation.com/rpc-locate.html

Better Business Bureau
Better Business Bureau

328 Laura (Wichita) 316-263-3146
www.wichita.bbb.org

Children and Youth

Adoption

1-800-862-3678
www.adopt.org/

Boys and Girls Town National Hotline

1-800-448-3000
www.girlsandboystown.org

Child/Adult Abuse and Neglect Hotline

1-800-922-5330
www.srskansas.org/

Child Abuse Hotline

1-800-922-5330

Child Abuse National Hotline

1-800-422-4453 1-800-222-4453 (TDD)
www.childhelpusa.org/home

Child Abuse National Hotline

1-800-4-A-CHILD (422-4453)
www.childabuse.com

Child Find of America

1-800-426-5678

Child Help USA National Child Abuse Hotline

1-800-422-4453

Child Protective Services

1-800-922-5330
www.srskansas.org/services/child_protective_services.htm

Health Wave

P.O. Box 3599 Topeka, KS 66601 1-800-792-4884 1-800-792-4292 (TTY)
www.kansashealthwave.org

Heartspring (Institute of Logopedics)

8700 E. 29TH N Wichita, KS 67226
www.heartspring.org

Kansas Big Brothers/Big Sisters

1-888-KS4-BIGS
www.ksbbbs.org

Kansas Children's Service League (Hays)

785-625-2244 1-877-530-5275
www.kcsl.org

Kansas Department of Health and Environment

785-296-1500
www.kdheks.gov e-mail:
info@kdheks.gov

Kansas Society for Crippled Children

106 W. Douglas, Suite 900 (Wichita) 1-800-624-4530 316-262-4676
www.kssociety.org

National Runaway Switchboard

1-800-RUNAWAY
www.1800runaway.org/

National Society for Missing and Exploited Children

1-800-THE-LOST (843-5678)
www.missingkids.com

Parents Anonymous Help Line
1-800-345-5044
www.parentsanonymous.org/palIndex10.html

Runaway Line
1-800-621-4000 1-800-621-0394 (TDD)
www.1800runaway.org/

Talking Books
1-800-362-0699
www.skyways.lib.ks.us/KSL/talking/ksl_bph.html

Community Action

Peace Corps
1-800-424-8580
www.peacecorps.gov

Public Affairs Hotline (Kansas Corporation Commission) 1-800-662-0027 www.kcc.state.ks.us

Counseling

All Faith Counseling Center
104 N. 6th Street (Atchison)
913-367-0105

Care Counseling
Family counseling services for Kansas and Missouri 1-888-999-2196

Carl Feril Counseling
608 N Exchange (St. John)
620-549-6411

Castlewood Treatment Center for Eating Disorders 1-888-822-8938
www.castlewoodtc.com

Catholic Charities
1-888-468-6909
www.catholiccharitiessalina.org

Center for Counseling
5815 W Broadway (Great Bend) 1-800-875-2544

Central Kansas Mental Health Center
1-800-794-8281 Will roll over after hours to a crisis number.

Consumer Credit Counseling Services
1-800-279-2227
www.kscgccs.org/

The Guidance Center
201 Main Street (Atchison)
913-367-1593

Kansas Problem Gambling Hotline
1-866-662-3800
www.ksmhc.org/Services/gambling.htm

National Hopeline Network
1-800-SUICIDE (785-2433)
www.hopeline.com

National Problem Gambling Hotline
1-800-552-4700
www.npgaw.org

Samaritan Counseling Center
1602 N. Main Street Hutchinson, KS 67501 620-662-7835
<http://cmc.pdswebpro.com/>

Self-Help Network of Kansas
1-800-445-0116
www.selfhelpnetwork.wichita.edu

Senior Health Insurance Counseling
1-800-860-5260
www.agingkansas.org

Sunflower Family Services, Inc.
(adoption, crisis pregnancy, conflict solution center) 1-877-457-5437
www.sunflowerfamily.org

Disability Services

American Association of People with Disabilities (AAPD) www.aapd.com

American Council for the Blind
1-800-424-8666
www.acb.org

Americans with Disabilities Act Information Hotline 1-800-514-0301 1-800-514-0383 (TTY)
www.ada.gov

Disability Advocates of Kansas, Incorporated
1-866-529-3824
www.disabilitysecrets.com

Disability Group, Incorporated
1-888-236-3348
www.disabilitygroup.com

Disability Rights Center of Kansas (DRC)
Formerly Kansas Advocacy & Protective Services 1-877-776-1541 1-877-335-3725 (TTY) www.drckansas.org

Hearing Healthcare Associates
1-800-448-0215

Kansas Commission for the Deaf and Hearing Impaired 1-800-432-0698
www.srskansas.org/kcdhh

Kansas Relay Center (Hearing Impaired service) 1-800-766-3777
www.kansasrelay.com

National Center for Learning Disabilities 1-888-575-7373
www.nclld.org

National Library Services for Blind & Physically Handicapped
www.loc.gov/nls/ 1-800-424-8567

Parmelee Law Firm
8623 E 32nd Street N, Suite 100
(Wichita) 1-877-267-6300

Environment

Environmental Protection Agency
1-800-223-0425 913-321-9516 (TTY)
www.epa.gov

Kansas Department of Health and Environment
Salina 785-827-9639 Hays 785-625-5663 Topeka 785-296-1500
www.kdheks.gov

Food and Drug

Center for Food Safety and Applied Nutrition
1-888-SAFEFOOD (723-3366)
www.cfsan.fda.gov/
www.healthfinder.gov/docs/doc03647.htm

US Consumer Product Safety Commission
1-800-638-2772 1-800-638-8270 (TDD)
www.cpsc.gov

USDA Meat and Poultry Hotline
1-888-674-6854 1-800-256-7072 (TTY)
www.fsis.usda.gov/

U.S. Food and Drug Administration
1-888-INFO-FDA 1-888-463-6332
www.fsis.usda.gov/

Poison Hotline
1-800-222-1222

Health Services

American Cancer Society
1-800-227-2345
www.cancer.org

American Diabetes Association
1-800-DIABETES (342-2383)
www.diabetes.org

AIDS/HIV Center for Disease Control and Prevention 1-800-CDC-INFO 1-888-232-6348 (TTY)
www.cdc.gov/hiv/

AIDS/STD National Hot Line
1-800-342-AIDS 1-800-227-8922 (STD line)

American Health Assistance Foundation
1-800-437-2423
www.ahaf.org

American Heart Association
1-800-242-8721
www.americanheart.org

American Lung Association
1-800-586-4872

American Stroke Association
1-888-4-STROKE
www.americanheart.org

Center for Disease Control and Prevention
1-800-CDC-INFO 1-888-232-6348 (TTY) www.cdc.gov/hiv/

Elder Care Helpline
www.eldercarelink.com
Eye Care Council
1-800-960-EYES
www.seetolearn.com

Kansas Foundation for Medical Care
1-800-432-0407
www.kfmc.org

National Health Information Center
1-800-336-4797
www.health.gov/nhic

National Cancer Information Center
1-800-227-2345 1-866-228-4327 (TTY)
www.cancer.org

National Institute on Deafness and Other Communication Disorders Information Clearinghouse 1-800-241-1044
1-800-241-1055 (TTY)
www.nidcd.nih.gov

Hospice Hospice-Kansas Association
1-800-767-4965

Kansas Hospice and Palliative Care Organization
1-888-202-5433
www.lifeproject.org/akh.htm

Southwind Hospice, Incorporated
www.southwindhospice.com
785-483-3161

Housing

Kansas Housing Resources Corporation
785-296-2065
www.housingcorp.org

US Department of Housing and Urban Development Kansas Regional Office
913-551-5462

Legal Services

Kansas Attorney General
1-800-432-2310 (Consumer Protection)
1-800-828-9745 (Crime Victims' Rights)
1-800-766-3777 (TTY) www.ksag.org

Kansas Bar Association

785-234-5696

www.ksbar.org**Kansas Department for Aging and Disability Services**

1-800-432-3535

www.agingkansas.org/index.htm**Kansas Legal Services**

1-800-723-6953

www.kansaslegalservices.org**Southwest Kansas Area Agency on Aging**

240 San Jose Drive (Dodge City) (620)

225-8230 <http://www.swkaaa.org/>**Medicaid Services****First Guard**

1-888-828-5698

www.firstguard.com**Kansas Health Wave**

1-800-792-4884 or 1-800-792-4292

(TTY)

www.kansashealthwave.org**Kansas Medical Assistance Program**

Customer Service 1-800-766-9012

www.kmpa-state-ks.us/**Medicare Information**

1-800-MEDICARE

www.medicare.gov**U.S. Department of Health and Human Services**

Centers for Medicare and Medicaid Services 1-800-MEDICARE (1-800-633-4227) or 1-877-486-2048 (TTY)

www.cms.hhs.gov**Mental Health Services****Alzheimer's Association**

1-800-272-3900 or 1-866-403-3073

(TTY) www.alz.org**Developmental Services of Northwest Kansas**

1-800-637-2229

Kansas Alliance for Mentally Ill

(Topeka, KS) 785-233-0755

www.namikansas.org**Make a Difference**

1-800-332-6262

Mental Health America

1-800-969-6MHA (969-6642)

National Alliance for the Mentally Ill Helpline

1-800-950-NAMI (950-6264) or 703-516-7227 (TTY)

www.nami.org**National Institute of Mental Health 1-**

866-615-6464 or 1-866-415-8051 (TTY)

www.nimh.nih.gov**National Library Services for Blind and Physically Handicapped 1-800-**

424-8567

www.loc.gov/nls/music/index.html**National Mental Health Association**

1-800-969-6642 1-800-433-5959 (TTY)

www.nmha.org**Pawnee Mental Health****State Mental Health Agency**

915 SW Harrison Street Topeka, KS

66612 785-296-3959

www.srskansas.org

Suicide Prevention Hotline

1-800-SUICIDE [784-2433]

www.hopeline.com**Nutrition****American Dietetic Association**1-800-877-1600 www.eatright.org**American Dietetic Association****Consumer Nutrition Hotline** 1-800-366-1655**Department of Human Nutrition**Kansas State University 119 Justin Hall
Manhattan, KS 66506 785-532-5500www.humec.k-state.edu/hn/**Eating Disorders Awareness and Prevention**

1-800-931-2237

www.nationaleatingdisorders.org**Food Stamps**Kansas Department of Social and
Rehabilitation Services (SRS) 1-888-
369-4777 or Local SRS officewww.srskansas.org/ISD/ees/food_stamps.htm**Kansas Department of Health and Environment**1000 SW Jackson, Suite 220 Topeka,
KS 66612 785-296-1320www.kdheks.gov/news-wic/index.html**Road and Weather Conditions****Kansas Road Conditions**1-866-511-KDOT 511 www.ksdot.org**Senior Services****Alzheimer's Association**

1-800-487-2585

American Association of Retired Persons (AARP)

1-888-OUR-AARP (687-2277)

www.aarp.org**Americans with Disabilities Act Information Line**1-800-514-0301 or 1-800-514-0383
[TTY]www.usdoj.gov/crt/ada**American Association of Retired Persons**

1-888-687-2277

www.aarp.org**Area Agency on Aging**

1-800-432-2703

Eldercare Locator

1-800-677-1116

www.eldercare.gov/eldercare/public/home.asp**Home Buddy**

1-866-922-8339

www.homebuddy.org**Home Health Complaints**Kansas Department of Social and
Rehabilitation Services (SRS) 1-800-
842-0078**Kansas Advocates for Better Care Inc.**

Consumer Information 1-800-525-1782

www.kabc.org**Kansas Department for Aging and Disability Services**

1-800-432-3535 or 785-291-3167 (TTY)

www.agingkansas.org/index.htm

Kansas Foundation for Medical Care, Inc.

Medicare Beneficiary Information 1-800-432-0407

Kansas Tobacco Use Quitline

1-866-KAN-STOP (526-7867)
www.kdheks.gov/tobacco/cessation.html

Older Kansans Employment Programs (OKEP)

785-296-7842
www.kansascommerce.com

Older Kansans Hotline

1-800-742-9531

Older Kansans Information Reference Sources on Aging (OKIRSA) 1-800-432-3535

Senior Health Insurance Counseling for Kansas

www.agingkansas.org/SHICK/shick_index.html

SHICK

1-800-860-5260
www.agingkansas.org/SHICK

Social Security Administration

785-296-3959 or 785-296-1491 (TTY)
www.srskansas.org

Department for Children and Family Services

785-296-3959 785-296-1491 (TTY)

Suicide Prevention

Suicide Prevention Services

1-800-784-2433 www.spsfv.org

Veterans

Federal Information Center

1-800-333-4636
www.FirstGov.gov

U.S. Department of Veterans Affairs

1-800-513-7731
www.kcva.org

Education (GI Bill)

1-888-442-4551

Health Resource Center

1-877-222-8387

Insurance Center

1-800-669-8477

Veteran Special Issue Help Line

Includes Gulf War/Agent Orange
Helpline 1-800-749-8387

U.S. Department of Veterans Affairs Mammography Helpline

1-888-492-7844

Other Benefits

1-800-827-1000

Memorial Program Service [includes

status of headstones and markers] 1-800-697-6947

Telecommunications Device for the Deaf/Hearing Impaired

1-800-829-4833 (TTY) www.vba.va.gov

Veterans Administration

Veterans Administration Benefits

1-800-669-8477

Life Insurance

1-800-669-8477

Education (GI Bill)

1-888-442-4551

Health Care Benefits

Income Verification and Means Testing

1-800-929-8387

Mammography Helpline

1-888-492-7844

Gulf War/Agent Orange Helpline

1-800-749-8387

Status of Headstones and Markers

1-800-697-6947

Telecommunications Device for the

1-877-222-8387

Deaf

1-800-829-4833

www.vba.va.gov

Benefits Information and Assistance

1-800-827-1000

Debt Management

1-800-827-0648

Life Insurance Information and Service

1-800-669-8477

Welfare Fraud Hotline

Welfare Fraud Hotline

1-800-432-3913

V. Detail Exhibits

[VVV Consultants LLC]

Patient Origin and Access

[VVV Consultants LLC]



Patient Origin by Region - Inpatient
Atchison, KS Residents Treated in KHA Reporting Area
Federal Fiscal Year: 2013

Hospital	Total Discharges		Pediatric		Adult Medical/Surgical								Psychiatric		Obstetric		Newborn		Surg %
	Cases	%	Cases	%	Age 0 - 17	Age 18 - 44	Age 45 - 64	Age 65 - 74	Age 75+	Cases	%	Cases	%	Cases	%	Cases	%		
Atchison Hospital - Atchison, KS	889	43.1%	18	2.0%	102	11.5%	157	17.7%	112	12.8%	278	31.3%	5	0.6%	110	12.4%	107	12.0%	16.0%
Kansas Residents/Other Missouri Hospitals	419	20.3%	9	2.1%	42	10.0%	118	28.2%	87	23.2%	60	21.5%	18	4.3%	23	5.5%	22	5.3%	35.1%
The University of Kansas Hospital - Kansas City, KS	258	12.5%	14	5.4%	35	13.6%	91	35.3%	51	19.8%	45	17.4%	5	1.9%	10	3.9%	7	2.7%	41.5%
Stormont-Vail HealthCare - Topeka, KS	66	3.2%	5	7.6%	11	16.7%	10	15.2%	6	9.1%	6	9.1%	12	18.2%	8	12.1%	8	12.1%	25.8%
Saint Luke's Hospital of Kansas City - Kansas City, MO	62	3.0%	0		4	6.5%	23	37.1%	17	27.4%	18	29.0%	0		0		0		29.0%
Saint Luke's Cushing Hospital - Leavenworth, KS	61	3.0%	0		6	9.8%	4	6.6%	0		3	4.9%	38	62.3%	5	8.2%	5	8.2%	4.9%
Children's Mercy Kansas City - Kansas City, MO	40	1.9%	39	97.5%	1	2.5%	0		0		0		0		0		0		22.5%
St. Francis Health - Topeka, KS	38	1.8%	0		0		11	28.9%	12	31.6%	11	28.9%	0		2	5.3%	2	5.3%	42.1%
Providence Medical Center - Kansas City, KS	33	1.6%	0		1	3.0%	8	24.2%	5	15.2%	15	45.5%	0		2	6.1%	2	6.1%	54.5%
Horton Community Hospital - Horton, KS	30	1.5%	1	3.3%	6	20.0%	7	23.3%	1	3.3%	15	50.0%	0		0		0		3.3%
Hewatha Community Hospital - Hewatha, KS	25	1.2%	1	4.0%	2	8.0%	5	20.0%	6	24.0%	5	20.0%	0		3	12.0%	3	12.0%	12.0%
Saint John Hospital - Leavenworth, KS	16	0.8%	0		2	12.5%	3	18.8%	1	6.2%	8	50.0%	0		1	6.2%	1	6.2%	
Overland Park Regional Medical Center - Overland Park, KS	16	0.8%	1	6.2%	0		4	25.0%	1	6.2%	0		0		5	31.2%	5	31.2%	37.5%
North Kansas City Hospital - North Kansas City, MO	14	0.7%	0		2	14.3%	7	50.0%	2	14.3%	3	21.4%	0		0		0		71.4%
Saint Luke's North Hospital - Barry Road - Kansas City, MO	12	0.6%	0		3	25.0%	3	25.0%	0		1	8.3%	0		3	25.0%	2	16.7%	41.7%
Lawrence Memorial Hospital - Lawrence, KS	11	0.5%	0		0		3	27.3%	2	18.2%	1	9.1%	0		3	27.3%	2	18.2%	18.2%
Shawnee Mission Health - Shawnee Mission, KS	10	0.5%	0		2	20.0%	4	40.0%	1	10.0%	0		0		2	20.0%	1	10.0%	40.0%



Patient Origin by Region - Inpatient
Atchison, KS Residents Treated in KHA Reporting Area
Federal Fiscal Year: 2013

Hospital	Total Discharges		Pediatric		Adult Medical/Surgical								Psychiatric		Obstetric		Newborn		Surg %
	Cases	%	Cases	%	Age 0 - 17	Age 18 - 44	Age 45 - 64	Age 65 - 74	Age 75+	Cases	%	Cases	%	Cases	%	Cases	%		
Horton Community Hospital - Horton, KS	7	0.3%	0		0		0		1	14.3%	0		0		3	42.9%	3	42.9%	14.3%
Olathe Medical Center Inc. - Olathe, KS	7	0.3%	0		1	14.3%	1	14.3%	1	14.3%	0		0		2	28.6%	2	28.6%	42.9%
Saint Luke's South - Overland Park, KS	6	0.3%	0		0		5	83.3%	1	16.7%	0		0		0		0		100.0%
Children's Mercy Hospital Kansas - Overland Park, KS	5	0.2%	4	80.0%	0		0		0		0		1	20.0%	0		0		
Other Hospitals	39	1.9%	0		5	12.8%	7	17.9%	7	17.9%	3	7.7%	6	15.4%	5	12.8%	6	15.4%	35.9%
Hospital Total	2,064	100.0%	92	4.5%	225	10.9%	471	22.8%	324	15.7%	502	24.3%	85	4.1%	187	9.1%	178	8.6%	25.8%



Patient Origin by Region - Inpatient
Atchison, KS Residents Treated in KHA Reporting Area
Federal Fiscal Year: 2014

Hospital	Total Discharges		Pediatric Age 0 - 17		Age 18 - 44		Age 45 - 64		Age 65 - 74		Age 75+		Psychiatric		Obstetric		Newborn		Surg %
	Cases	%	Cases	%	Cases	%	Cases	%	Cases	%	Cases	%	Cases	%	Cases	%	Cases	%	
Atchison Hospital - Atchison, KS	872	42.3%	21	2.4%	79	9.1%	167	19.2%	103	11.8%	237	27.2%	6	0.7%	139	15.9%	120	13.8%	20.6%
Kansas Residents/Other Missouri Hospitals	480	23.3%	1	0.2%	56	11.7%	134	27.9%	96	20.0%	114	23.8%	17	3.5%	32	6.7%	30	6.2%	32.9%
The University of Kansas Hospital - Kansas City, KS	255	12.4%	6	2.3%	42	16.4%	96	37.5%	64	25.0%	41	16.0%	3	1.2%	3	1.2%	1	0.4%	40.6%
Saint Luke's Hospital of Kansas City - Kansas City, MO	86	3.2%	0		4	6.1%	23	34.8%	14	21.2%	20	30.3%	0		3	4.5%	2	3.0%	25.8%
Stormont-Vail HealthCare - Topeka, KS	62	3.0%	1	1.6%	13	21.0%	14	22.8%	4	6.5%	7	11.3%	14	22.6%	5	8.1%	4	6.5%	40.3%
St. Francis Health - Topeka, KS	37	1.8%	1	2.7%	1	2.7%	8	21.6%	11	29.7%	12	32.4%	0		2	5.4%	2	5.4%	51.4%
Children's Mercy Kansas City - Kansas City, MO	36	1.7%	34	94.4%	2	5.6%	0		0		0		0		0		0		36.1%
Saint Luke's Cushing Hospital - Leavenworth, KS	32	1.6%	0		0		2	6.2%	0		3	9.4%	21	65.6%	3	9.4%	3	9.4%	
Horton Community Hospital - Horton, KS	27	1.3%	3	11.1%	2	7.4%	8	29.6%	5	18.5%	9	33.3%	0		0		0		
Providence Medical Center - Kansas City, KS	25	1.2%	0		1	4.0%	5	20.0%	2	8.0%	14	56.0%	0		2	8.0%	1	4.0%	48.0%
North Kansas City Hospital - North Kansas City, MO	22	1.1%	0		1	4.5%	7	31.8%	4	18.2%	8	36.4%	0		1	4.5%	1	4.5%	40.9%
Saint John Hospital - Leavenworth, KS	18	0.9%	0		3	16.7%	1	5.6%	2	11.1%	3	16.7%	9	50.0%	0		0		
Overland Park Regional Medical Center - Overland Park, KS	18	0.9%	0		1	5.6%	3	16.7%	1	5.8%	3	16.7%	0		4	22.2%	8	33.3%	38.9%
Saint Luke's North Hospital - Barry Road - Kansas City, MO	14	0.7%	0		0		10	71.4%	1	7.1%	1	7.1%	0		1	7.1%	1	7.1%	14.3%
Hiawatha Community Hospital - Hiawatha, KS	12	0.6%	0		1	8.3%	3	25.0%	0		2	16.7%	0		3	25.0%	3	25.0%	
Shawnee Mission Health - Shawnee Mission, KS	12	0.6%	0		0		6	50.0%	3	25.0%	0		0		2	16.7%	1	8.3%	58.3%
Lawrence Memorial Hospital - Lawrence, KS	11	0.5%	0		3	27.3%	0		1	9.1%	1	9.1%	0		3	27.3%	3	27.3%	18.2%



Patient Origin by Region - Inpatient
Atchison, KS Residents Treated in KHA Reporting Area
Federal Fiscal Year: 2014

Hospital	Total Discharges		Pediatric Age 0 - 17		Age 18 - 44		Age 45 - 64		Age 65 - 74		Age 75+		Psychiatric		Obstetric		Newborn		Surg %
	Cases	%	Cases	%	Cases	%	Cases	%	Cases	%	Cases	%	Cases	%	Cases	%	Cases	%	
Research Medical Center - Kansas City, MO	8	0.4%	0		3	37.5%	0		0		2	25.0%	3	37.5%	0		0		12.5%
Horton Community Hospital - Horton, KS	7	0.3%	0		2	28.6%	1	14.3%	0		2	28.6%	0		1	14.3%	1	14.3%	
Olathe Medical Center Inc. - Olathe, KS	7	0.3%	0		1	14.3%	0		0		0		0		3	42.9%	3	42.9%	14.3%
Menorah Medical Center - Overland Park, KS	6	0.3%	0		0		2	33.3%	3	50.0%	1	16.7%	0		0		0		100.0%
Kansas Residents/Minnesota Hospitals	5	0.2%	0		0		3	60.0%	0		1	20.0%	1	20.0%	0		0		20.0%
Saint Luke's North Hospital - Smithville - Smithville, MO	5	0.2%	0		0		0		1	20.0%	0		4	80.0%	0		0		
Other Hospitals	22	1.1%	3	13.6%	4	18.2%	4	18.2%	4	18.2%	1	4.5%	2	9.1%	2	9.1%	2	9.1%	36.4%
Hospital Total	2,060	100.0%	70	3.4%	219	10.8%	497	24.1%	319	15.5%	482	23.4%	80	3.9%	209	10.1%	184	8.9%	27.8%



Patient Origin by Region - Inpatient
Atchison, KS Residents Treated in KHA Reporting Area
Federal Fiscal Year: 2015

Hospital	Total Discharges		Pediatric Age 0 - 17		Adult Medical/Surgical				Psychiatric		Obstetric		Newborn						
	Cases	%	Cases	%	Age 18 - 44	Age 45 - 64	Age 65 - 74	Age 75+	Cases	%	Cases	%	Cases	%					
Atchison Hospital - Atchison, KS	706	37.8%	17	2.4%	41	5.6%	101	14.3%	111	15.7%	215	30.5%	3	0.4%	120	17.0%	97	13.8%	15.2%
Kansas Residents/Other Missouri Hospitals	441	23.6%	2	0.5%	48	10.9%	117	26.5%	96	21.6%	108	24.6%	19	4.3%	26	5.9%	25	5.7%	34.2%
The University of Kansas Hospital - Kansas City, KS	265	14.2%	6	2.3%	42	15.8%	98	37.0%	61	23.0%	40	15.1%	7	2.6%	7	2.6%	4	1.5%	35.8%
Stormont-Vail HealthCare - Topeka, KS	74	4.0%	5	6.8%	5	6.8%	10	13.5%	8	10.8%	13	17.6%	26	35.1%	4	5.4%	3	4.1%	17.6%
Children's Mercy Kansas City - Kansas City, MO	49	2.6%	47	95.9%	0	0	0	0	0	0	2	4.1%	0	0	0	0	0	0	18.4%
Saint Luke's Hospital of Kansas City - Kansas City, MO	45	2.4%	0	0	5	11.1%	13	28.9%	10	22.2%	17	37.8%	0	0	0	0	0	0	26.7%
St. Francis Health - Topeka, KS	39	2.1%	0	0	1	2.6%	11	28.2%	14	35.9%	8	20.5%	1	2.6%	2	5.1%	2	5.1%	43.6%
Providence Medical Center - Kansas City, KS	28	1.5%	0	0	5	17.9%	9	32.1%	0	0	12	42.9%	2	7.1%	0	0	0	0	17.9%
Overland Park Regional Medical Center - Overland Park, KS	28	1.5%	0	0	6	21.4%	1	3.6%	6	17.9%	0	0	8	28.6%	8	28.6%	8	28.6%	25.0%
Shawnee Mission Health - Shawnee Mission, KS	24	1.3%	1	4.2%	4	16.7%	6	25.0%	1	4.2%	0	0	7	29.2%	3	12.5%	2	8.3%	37.5%
Horton Community Hospital - Horton, KS	22	1.2%	0	0	2	9.1%	10	45.5%	5	22.7%	5	22.7%	0	0	0	0	0	0	4.5%
North Kansas City Hospital - North Kansas City, MO	20	1.1%	0	0	1	5.0%	7	35.0%	3	15.0%	9	45.0%	0	0	0	0	0	0	55.0%
Saint Luke's North Hospital - Bary Road - Kansas City, MO	20	1.1%	0	0	2	10.0%	9	45.0%	2	10.0%	2	10.0%	1	5.0%	2	10.0%	2	10.0%	25.0%
Saint Luke's Cushing Hospital - Leavenworth, KS	15	0.8%	0	0	1	6.7%	2	13.3%	0	0	0	0	6	40.0%	6	40.0%	6	40.0%	20.0%
Lawrence Memorial Hospital - Lawrence, KS	14	0.8%	0	0	0	0	2	14.3%	0	0	0	0	6	42.9%	6	42.9%	6	42.9%	21.4%
Saint John Hospital - Leavenworth, KS	13	0.7%	0	0	2	15.4%	2	15.4%	1	7.7%	5	38.5%	3	23.1%	0	0	0	0	0
Children's Mercy Hospital Kansas - Overland Park, KS	9	0.5%	9	100.0%	0	0	0	0	0	0	0	0	0	0	0	0	0	0	0



Patient Origin by Region - Inpatient
Atchison, KS Residents Treated in KHA Reporting Area
Federal Fiscal Year: 2015

Hospital	Total Discharges		Pediatric Age 0 - 17		Adult Medical/Surgical				Psychiatric		Obstetric		Newborn						
	Cases	%	Cases	%	Age 18 - 44	Age 45 - 64	Age 65 - 74	Age 75+	Cases	%	Cases	%	Cases	%					
Research Medical Center - Kansas City, MO	6	0.3%	0	0	0	0	0	1	16.7%	5	83.3%	0	0	0					
Saint Luke's North Hospital - Smithville - Smithville, MO	6	0.3%	0	0	0	2	33.3%	0	0	4	66.7%	0	0	0					
Menorah Medical Center - Overland Park, KS	5	0.3%	0	0	1	20.0%	0	1	20.0%	1	20.0%	1	20.0%	1	20.0%	40.0%			
Saint Luke's South - Overland Park, KS	5	0.3%	0	0	0	2	40.0%	2	40.0%	1	20.0%	0	0	0	100.0%				
Other Hospitals	32	1.7%	0	0	4	12.5%	7	21.9%	6	18.8%	3	9.4%	2	6.2%	5	15.6%	5	15.6%	21.9%
Hospital Total	1,866	100.0%	87	4.7%	170	9.1%	409	21.9%	326	17.5%	440	23.6%	83	4.4%	190	10.2%	161	8.6%	24.8%



Outpatient Market Penetration by Service Type*
 Atchison Hospital - Atchison, KS
 Total Outpatient Visits
 Federal Fiscal Year: 2013



Revenue Category Visits

	Total Visits	Atchison, KS		Doniphan, KS		Buchanan, MO		Jefferson, KS		Brown, KS		Leavenworth, KS		Plette, MO		All Other Visits
		Visits	%	Visits	%	Visits	%	Visits	%	Visits	%	Visits	%	Visits	%	
1 Emergency Department (45x)	8,175	6,415	86.8%	337	15.4%	355	14.3%	194	4.3%	107	3.2%	142	0.6%	101	0.3%	513
2 Surgery (36x, 49x)	1,762	1,322	83.4%	137	19.4%	66	3.7%	64	3.2%	69	5.4%	57	0.9%	8	0.1%	39
3 Observation (76x, excl. 761)	431	354	65.9%	21	9.6%	16	5.6%	7	0.7%	5	1.0%	11	0.5%	5	0.2%	12
11 Radiology - Diagnostic (32x, excl. 322 and 323)	7,505	5,814	79.8%	458	20.9%	290	8.9%	193	4.4%	129	3.9%	141	0.7%	54	0.3%	426
12 Arthro/Arteriography (322, 323)	7	6	35.3%	1	9.1%											
14 Nuclear Medicine (34x)	271	216	55.1%	15	8.1%	9	3.8%	10	0.8%	11	3.2%	4	0.2%	1	0.1%	5
15 CT Scan (35x)	2,046	1,585	73.0%	145	16.2%	97	10.7%	49	2.4%	25	2.8%	32	0.5%	21	0.2%	92
16 Mammography (401, 403)	1,063	867	70.3%	74	14.4%	29	5.7%	37	3.0%	31	4.8%	10	0.2%	5	0.1%	10
17 Ultrasound (402)	1,330	1,049	72.0%	112	19.3%	29	2.9%	27	2.9%	42	6.4%	29	0.6%	10	0.1%	32
18 PET Scan (404)	14	12	30.8%	1	3.8%	1	1.5%									
19 Magnetic Resonance Technology (61x)	766	597	68.9%	50	14.1%	22	3.9%	22	1.9%	28	5.9%	19	0.7%	8	0.2%	20
23 Pulmonary Function (46x)	531	421	69.7%	28	7.1%	15	5.3%	5	1.3%	4	2.9%	32	2.1%	15	0.9%	11
25 Stress Test (482)	212	166	71.6%	10	10.4%	8	5.9%	7	1.8%	13	8.8%	4	0.4%	2	0.2%	2
33 Cardiac Rehab (943)	207	166	87.4%	8	23.5%	4	33.3%	10	9.8%			13	3.0%	3	0.4%	3
35 Treatment Room (76X excl. 762)	1,097	896	67.1%	37	7.3%	57	14.3%	50	4.6%	27	1.9%	12	0.9%	6	0.5%	12
36 Respiratory Services (41x)	634	709	89.0%	26	14.7%	31	20.8%	11	7.5%	5	3.9%	19	1.2%	4	0.4%	29
37 EKG/ECG (73x)	1,815	1,500	74.6%	67	9.3%	72	8.6%	53	3.6%	19	1.5%	27	0.5%	10	0.2%	67
38 Cardiology (46x excl. 481-483)	391	310	61.8%	29	14.4%	9	3.8%	16	3.4%	11	2.9%	8	1.5%	4	0.7%	4
39 Sleep Lab (HCPC 95805-95811)	77	63	46.3%	4	5.3%	5	6.2%	1	0.8%	3	6.7%					1
42 Physical Therapy (42x)	2,111	1,793	92.4%	101	40.8%	67	23.3%	66	14.8%	18	4.1%	22	1.3%	16	0.5%	28



Outpatient Market Penetration by Service Type*
 Atchison Hospital - Atchison, KS
 Total Outpatient Visits
 Federal Fiscal Year: 2013



Revenue Category Visits

	Total Visits	Atchison, KS		Doniphan, KS		Buchanan, MO		Jefferson, KS		Brown, KS		Leavenworth, KS		Plette, MO		All Other Visits
		Visits	%	Visits	%	Visits	%	Visits	%	Visits	%	Visits	%	Visits	%	
43 Occupational Therapy (43x)	440	378	79.1%	23	23.5%	8	3.8%	9	3.9%	4	1.3%	8	1.1%	3	0.3%	7
44 SpeechLanguage Pathology (44x)	287	228	94.6%	23	42.6%			4	7.8%	7	14.3%	1	0.2%			4
Actual visits in report	21,495	16,956	74.8%	1,246	16.8%	781	7.2%	610	3.7%	448	3.6%	398	0.6%	182	0.2%	874
Actual unclassified visits	15,740	13,269	88.5%	618	5.7%	471	4.9%	461	6.7%	234	1.7%	222	0.8%	109	0.2%	356
Actual total visits	37,235	30,225	70.9%	1,864	10.2%	1,252	6.1%	1,071	4.6%	682	2.6%	620	0.7%	291	0.2%	1,230



Outpatient Market Penetration by Service Type*
Atchison Hospital - Atchison, KS
Total Outpatient Visits
Federal Fiscal Year: 2014



Revenue Category Visits

	Total Visits	Atchison, KS		Doniphan, KS		Buchanan, MO		Jefferson, KS		Leavenworth, KS		Brown, KS		Platte, MO		All Other Visits
		Visits	%	Visits	%	Visits	%	Visits	%	Visits	%	Visits	%	Visits	%	
1 Emergency Department (45x)	8,718	6,982	86.4%	291	13.3%	323	13.4%	207	4.6%	194	0.8%	97	3.7%	57	0.2%	567
2 Surgery (36x, 49x)	1,663	1,248	61.0%	141	19.2%	76	4.2%	70	3.5%	31	0.5%	70	5.5%	7	0.1%	20
3 Observation (76x, excl. 761)	256	207	47.3%	11	5.0%	6	1.8%	7	0.6%	5	0.3%	6	1.3%	4	0.2%	10
11 Radiology - Diagnostic (32x, excl. 322 and 323)	7,541	5,798	78.0%	464	19.9%	253	7.8%	222	4.9%	183	0.9%	137	4.4%	55	0.3%	429
12 Arthro/Arteriography (322, 323)	6	4	26.7%					1	3.7%							1
14 Nuclear Medicine (34x)	300	236	51.6%	23	8.7%	13	4.4%	15	1.3%	5	0.3%	3	0.8%	1	0.0%	4
15 CT Scan (35x)	1,906	1,516	70.1%	99	11.2%	62	6.2%	46	2.2%	38	0.5%	30	3.2%	10	0.1%	105
16 Mammography (401, 403)	1,015	825	67.1%	65	11.5%	33	6.8%	40	3.2%	15	0.3%	24	3.4%	3	0.1%	10
17 Ultrasound (402)	1,321	1,051	70.8%	102	17.7%	30	2.9%	41	4.2%	25	0.4%	35	5.6%	3	0.0%	34
18 PET Scan (404)	18	16	27.1%			2	2.2%									
19 Magnetic Resonance Technology (61x)	667	504	60.6%	47	12.3%	25	4.4%	23	2.1%	19	0.5%	26	5.3%	2	0.0%	21
23 Pulmonary Function (46x)	314	236	48.4%	19	3.9%	8	2.7%	7	1.7%	20	1.5%	3	2.0%	15	0.8%	6
25 Stress Test (482)	231	186	62.2%	11	12.4%	8	5.6%	12	2.9%	5	0.5%	5	3.7%	1	0.1%	3
33 Cardiac Rehab (843)	431	334	85.7%	4	66.7%	16	76.2%	13	9.8%	41	9.9%			11	1.5%	12
35 Treatment Room (76X excl. 762)	699	617	61.3%	14	2.9%	13	2.8%	19	1.7%	5	0.3%	22	1.7%	3	0.2%	6
36 Respiratory Services (41x)	682	561	78.5%	30	13.8%	17	10.3%	13	8.6%	11	0.7%	1	0.8%	7	0.7%	42
37 EKG/ECG (73x)	1,778	1,423	69.7%	66	7.9%	55	5.1%	47	3.0%	39	0.6%	37	3.0%	12	0.2%	99
38 Cardiology (48x excl. 481-483)	362	298	45.6%	9	2.4%	10	2.8%	14	2.7%	7	0.8%	12	2.6%	2	0.2%	10
39 Sleep Lab (HCPC 95805-95811)	92	72	42.1%	6	4.7%	3	4.8%	5	3.4%	1	0.3%	4	5.9%			1
42 Physical Therapy (42x)	2,289	1,955	93.8%	86	43.4%	76	22.2%	61	13.3%	38	2.7%	33	6.4%	6	0.3%	34



Outpatient Market Penetration by Service Type*
Atchison Hospital - Atchison, KS
Total Outpatient Visits
Federal Fiscal Year: 2014



Revenue Category Visits

	Total Visits	Atchison, KS		Doniphan, KS		Buchanan, MO		Jefferson, KS		Leavenworth, KS		Brown, KS		Platte, MO		All Other Visits
		Visits	%	Visits	%	Visits	%	Visits	%	Visits	%	Visits	%	Visits	%	
43 Occupational Therapy (43x)	535	437	78.9%	28	33.3%	15	6.4%	26	11.5%	10	1.4%	16	5.8%			3
44 SpeechLanguage Pathology (44x)	145	139	87.4%	2	10.5%					2	0.6%	2	4.9%			
47 Audiology (47x)	14	14	18.9%													
Actual visits in report	22,212	17,622	72.7%	1,140	14.1%	769	6.6%	668	3.9%	516	0.7%	437	3.6%	136	0.2%	934
Actual unclassified visits	15,645	12,755	47.1%	1,002	4.3%	469	4.2%	431	5.4%	252	0.7%	242	1.1%	99	0.1%	395
Actual total visits	37,857	30,377	59.2%	2,142	6.8%	1,228	5.4%	1,099	4.4%	768	0.7%	679	2.0%	235	0.1%	1,329



Outpatient Market Penetration by Service Type*
 Atchison Hospital - Atchison, KS
 Total Outpatient Visits
 Federal Fiscal Year: 2015



Revenue Category Visits

	Total Visits	Atchison, KS		Doniphan, KS		Buchanan, MO		Jefferson, KS		Leavenworth, KS		Brown, KS		Platte, MO		All Other Visits
		Visits	%	Visits	%	Visits	%	Visits	%	Visits	%	Visits	%	Visits	%	
1 Emergency Department (45x)	8,770	6,906	85.2%	285	12.7%	423	14.2%	235	5.2%	222	0.8%	124	5.2%	57	0.2%	518
2 Surgery (36x, 49x)	1,805	1,136	56.8%	137	19.7%	58	3.1%	70	3.2%	73	1.0%	93	7.7%	9	0.1%	29
3 Observation (76x, excl. 761)	233	187	44.1%	12	5.5%	6	1.6%	12	1.2%	3	0.2%	3	0.6%	1	0.0%	9
11 Radiology - Diagnostic (32x, excl. 322 and 323)	7,385	5,665	77.3%	431	19.0%	339	9.6%	207	4.6%	196	0.9%	147	5.1%	48	0.2%	352
12 Arthro/Arteriography (322, 323)	6	3	16.7%							2	2.7%					1
14 Nuclear Medicine (34x)	289	234	49.5%	17	7.0%	9	2.7%	10	0.9%	9	0.5%	6	2.1%			4
15 CT Scan (35x)	1,876	1,437	68.7%	97	10.7%	89	7.3%	62	2.9%	41	0.5%	40	4.7%	13	0.1%	97
16 Mammography (401, 403)	1,099	909	70.1%	61	12.1%	35	7.4%	45	3.6%	13	0.3%	24	3.7%	4	0.1%	8
17 Ultrasound (402)	1,492	1,180	70.2%	99	16.7%	55	4.7%	46	4.4%	36	0.6%	34	5.6%	8	0.1%	35
18 PET Scan (404)	14	13	22.8%	1	2.5%											
19 Magnetic Resonance Technology (51x)	769	594	64.4%	39	11.3%	37	5.7%	23	2.0%	24	0.6%	26	5.3%	2	0.0%	24
23 Pulmonary Function (46x)	276	200	46.1%	9	1.9%	13	4.4%	8	2.0%	22	1.8%	6	5.5%	13	0.9%	5
25 Stress Test (482)	163	130	52.4%	6	4.3%	10	6.4%	4	1.0%	4	0.3%	5	5.6%			4
33 Cardiac Rehab (943)	434	346	98.6%	11	78.8%	17	60.7%	2	2.4%	38	7.9%	1	0.7%	11	1.3%	8
35 Treatment Room (76X excl. 762)	798	641	57.4%	60	12.7%	18	2.8%	13	1.1%	34	1.7%	19	1.8%	2	0.1%	11
36 Respiratory Services (41x)	585	481	84.2%	10	6.4%	36	20.8%	6	4.5%	16	0.9%	5	4.5%	3	0.2%	28
37 EKG/ECG (73x)	1,578	1,239	63.4%	55	6.5%	82	6.5%	58	3.3%	33	0.4%	28	2.5%	10	0.1%	75
38 Cardiology (46x excl. 481-483)	359	285	46.0%	18	5.1%	15	3.4%	13	2.4%	12	1.2%	8	2.4%	1	0.1%	7
39 Sleep Lab (HCPC 95805-95811)	115	69	47.6%	9	6.7%	7	9.5%	4	3.2%	3	0.7%	22	30.6%	1	0.1%	
42 Physical Therapy (42x)	2,333	1,963	94.4%	82	31.8%	79	24.2%	50	10.5%	51	2.8%	44	5.6%	4	0.1%	60



Outpatient Market Penetration by Service Type*
 Atchison Hospital - Atchison, KS
 Total Outpatient Visits
 Federal Fiscal Year: 2015



Revenue Category Visits

	Total Visits	Atchison, KS		Doniphan, KS		Buchanan, MO		Jefferson, KS		Leavenworth, KS		Brown, KS		Platte, MO		All Other Visits
		Visits	%	Visits	%	Visits	%	Visits	%	Visits	%	Visits	%	Visits	%	
43 Occupational Therapy (43x)	480	403	77.9%	13	13.3%	23	8.6%	10	5.0%	9	1.0%	8	2.6%	3	0.3%	11
44 SpeechLanguage Pathology (44x)	62	51	64.6%	4	10.3%	2	1.8%					5	6.5%			
47 Audiology (47x)	14	13	17.1%			1	0.3%									
Actual visits in report	22,757	17,789	72.4%	1,176	14.6%	959	7.4%	637	3.7%	667	0.9%	511	4.6%	138	0.2%	880
Actual unclassified visits	16,046	12,736	45.3%	1,297	5.4%	517	4.4%	480	4.9%	322	0.7%	247	1.4%	93	0.1%	374
Actual total visits	38,803	30,525	57.9%	2,473	7.7%	1,476	6.0%	1,097	4.1%	989	0.8%	758	2.7%	231	0.1%	1,254

Town Hall Attendees Notes and Feedback

[VVV Consultants LLC]

Atchison County, KS Town Hall Attendees - 4/26/2016 N=34

IRS Category	First	Last	Organization	Address	City	ST	ZIP
Leaders in other not-for-profit health care organizations, such as hospitals, clinics, nursing homes and home-based and community-based services.	Bob	Adrian	Atchison Hospital	800 Raven Hill Rd	Atchison	KS	66002
Leaders in other not-for-profit health care organizations, such as hospitals, clinics, nursing homes and home-based and community-based services.	Joyce	Allen	Atchison Hospital	1104 Independence CT	Atchison	KS	66002
Leaders in other not-for-profit health care organizations, such as hospitals, clinics, nursing homes and home-based and community-based services.	Aggie	Asher	Atchison Hospital	800 Raven Hill Dr.	Atchison	KS	66002
Leaders in other not-for-profit health care organizations, such as hospitals, clinics, nursing homes and home-based and community-based services.	Leslie	Blakley	Atchison Hospital	8411 SW Blakeley Rd	Rushville	MO	64484
Leaders in other not-for-profit health care organizations, such as hospitals, clinics, nursing homes and home-based and community-based services.	Goldie	Boldridge-Brown	Atchison Hospital Board	800 Raven Hill Rd	Atchison	KS	66002
Leaders in other not-for-profit health care organizations, such as hospitals, clinics, nursing homes and home-based and community-based services.	Jennifer	Brockhoff	Atchison Hospital	800 Raven Hill Rd	Atchison	KS	66002
Directors or staff of health and human service organizations.	Beth	Brown	Atchison County Health Department	408 N 7th Street	Atchison	KS	66002
Community member.	Julia	Clem		411 N 3rd	Hiawatha	KS	66434
Other health professionals.	Andrea	Clements	Live Well Live Atchison	200 S 10th	Atchison	KS	66002
Other health professionals.	Gus	Drafz	Young Rembrandts	806 N 4th St	Atchison	KS	66002
Leaders in other not-for-profit health care organizations, such as hospitals, clinics, nursing homes and home-based and community-based services.	Steve	Durkin	Atchison Hospital	800 Raven Hill Rd	Atchison	KS	66002
Leaders in other not-for-profit health care organizations, such as hospitals, clinics, nursing homes and home-based and community-based services.	Gary	Foll	Atchison Hospital	800 Raven Hill Rd	Atchison	KS	66002
Other health professionals.	Gus	Griffin	MGP	420 N 3rd St	Rushville	MO	64484
Community member.	Garrett	Grort					
Leaders in other not-for-profit health care organizations, such as hospitals, clinics, nursing homes and home-based and community-based services.	John	Jacobson	Atchison Hospital	800 Raven Hill Rd	Atchison	KS	66002
Leaders in other not-for-profit health care organizations, such as hospitals, clinics, nursing homes and home-based and community-based services.	Sandy	Lessett	Atchison Hospital	800 Raven Hill Rd	Atchison	KS	66002
Community member.	Quentin	Mayer					
Leaders in other not-for-profit health care organizations, such as hospitals, clinics, nursing homes and home-based and community-based services.	Kelli	McCarty	Atchison Hospital	2143 Main St	Atchison	KS	66002
Other health professionals.	Zach	McNulty	Globe	400 Sante Fe St #10	Atchison	KS	66002
Leaders in other not-for-profit health care organizations, such as hospitals, clinics, nursing homes and home-based and community-based services.	Larry	Mears	Atchison Hospital	PO Box 435	Atchison	KS	66002
Other health professionals.	Catherine	Miller	Atchison Lions Club	714 Laramie	St. Joseph	MO	64506
Other health professionals.	Susan	Myers	Atchison Public Schools, USD 409	1407 Fairway Dr	Atchison	KS	66002
Other health professionals.	Diane	Nielson	K-State Research and Extention - Atchison County	PO Box 109	Effingham	KS	66023
Other health professionals.	Karlene	Nigley	DEK Multi Co	2411 HWY	Atchison	KS	66002
Other health professionals.	Con	Olsen	ACEMS	10443 HWY 59	Atchison	KS	66002
Other health professionals.	Justin	Pregont	City of Atchison	1801 Main	Atchison	KS	66002
Leaders in other not-for-profit health care organizations, such as hospitals, clinics, nursing homes and home-based and community-based services.	Melinda	Pregont	Trusted Care Chiropractic, LLC	307 N 2nd	Atchison	KS	66002
Leaders in other not-for-profit health care organizations, such as hospitals, clinics, nursing homes and home-based and community-based services.	Pam	Rizza	Atchison Hospital	800 Raven Hill Rd	Atchison	KS	66002
Community member.	Shawn	Rizza		1712 Brockdale	Atchison	KS	66002
Leaders in other not-for-profit health care organizations, such as hospitals, clinics, nursing homes and home-based and community-based services.	TC	Roberts	Atchison Hospital	800 Raven Hill Dr	Atchison	KS	66002
Other health professionals.	Jeff	Schuele	Atchison County Commissioner	1704 Blue Bird Ct	Atchison	KS	66002
Other health professionals.	Liz	Wagner	Elizabeth's	121 N. 5th Street	Atchison	KS	66002
Other health professionals.	Kate	Werring	The Guidance Center	201 Main St	Atchison	KS	66002
Directors or staff of health and human service organizations.	Connie	Zeit	Atchison County Health Department	616 Commercial	Atchison	KS	66002

Community Health Needs Assessment	
Atchison County, KS - Strengths (Color Cards) N=34	
#	Today: What are the strengths of our community that contribute to health?
1	Access to health services
2	Community engagement
3	Physical environment- walking paths, YMCA
4	Pharmacy - quality, education
5	Education- day care/head start, BC/Highland (higher)
6	Access to healthcare- free clinics, health department, guidance center hospital option, chiropractors
7	Access to exercise facilities
8	Providers
9	Great community resources
10	Willingness to address issues/community engagement
11	Rehab at hospital
12	School nurse
13	Home health
14	Hospice
15	Primary care
16	Community clinic
17	Access to exercise
18	Inpatient care
19	Physician strength
20	Surgery
21	Administrative staff
22	Facility
23	Med staff strength
24	Community interest
25	Health delivery system/capability
26	Community health clinic/poverty level
27	Access to fitness
28	Medical staff
29	Community interest
30	Health delivery
31	FQHC
32	Community health clinic
33	Access to fitness opportunities
34	Large number of preventive services
35	Community engagement
36	Physical environment- walking paths, new YMCA, higher education access, school nurse
37	Good hospital facility
38	Access to healthcare- community health clinic
39	Benedictine College- higher education access
40	Location proximity to cities
41	Med help local pharmacists

Community Health Needs Assessment

Atchison County, KS - Strengths (Color Cards) N=34

#	Today: What are the strengths of our community that contribute to health?
42	Close to KC and St. Joe for referrals
43	Good day care- head start program
44	Exercise facilities- private and community
45	Community sports- kids
46	Atchison health clinic
47	Fixing streets/sidewalks
48	School nurse
49	LWLA
50	Growing community movement toward health- LWLA
51	Large number of community collaborations
52	Hospital spearheads new ideas and services
53	Multidisciplinary effort to work on problems/issues "Live Well, Live Atchison"
54	Community engagement
55	Community engagement- LWLA/Project Atchison
56	Good schools and educational opportunities
57	Citizens focused on community improvement and stabilization
58	Multiple new businesses
59	School nurse
60	Home health
61	Hospice
62	Primary care
63	Great community resources
64	Willingness to address issues/community engagement
65	Rehab program at hospital
66	Physical activities
67	Exercise programs
68	Resources in community - above average
69	Location- close to resources
70	Community clinic
71	Access to exercise
72	School nursing services
73	Access to many (not all) specialty doctors
74	Urgent care access (now)
75	Review of sex ed in public school in both districts (curriculum)
76	Elderly care
77	Hospice
78	Opportunities for physical activities
79	Hospital facilities/resources
80	School health/screenings
81	School nurse
82	Home health
83	Hospice

Community Health Needs Assessment

Atchison County, KS - Strengths (Color Cards) N=34

#	Today: What are the strengths of our community that contribute to health?
84	Dental
85	Chiro
86	Pharmacy
87	Inpatient
88	Providers available
89	School nurse
90	Inpatient services
91	Inpatient services
92	School nurse
93	Pharmacies
94	Chiropractic services
95	Number of providers available here
96	Home health and hospice
97	Dental services
98	YMCA
99	Free clinic
100	Hospital
101	Providers
102	Hospital and health care available
103	Live Well Live Atchison
104	Expanded clinic for low income
105	Attendance at meeting and participation on number of surveys completed in CHNA
106	City and county leadership
107	Recent grants to improve streets, sidewalks, curbs
108	Live Well Live Atchison
109	New YMCA coming
110	Good schools- public and private
111	Project Atchison
112	Hospital facility
113	Presence of the community health clinic
114	Community collaboration
115	New YMCA coming online
116	Engaged, collaborative i.e. civic groups
117	Facilities (YMCA, hospital, health clinic)

Community Health Needs Assessment

Atchison County, KS - Weakness (White Cards) N=34

#	Today: What are the weaknesses of our community that contribute to health?
1	Improve insurance base to provide health services
2	Access
3	More consistent support for those suffering from alcohol/drugs and mental health issues
4	Mental health issues still carry stigma
5	More school-based services needed to improve children's health (including parent education)
6	Funding for more services
7	Poverty
8	Economic vitality
9	The number of children in poverty
10	Need to increase the number of young professionals returning to Atchison
11	Transportation
12	No smoking on public property/hospital
13	Bike lanes
14	Service transportation
15	Public transportation
16	Drug use/pain killers/heroin
17	Wellness classes available for all
18	City wide tax on cigarettes
19	Property mail code
20	Reaction vs preventive care
21	Health insurance
22	Urgent care
23	Referrals instead of drugs
24	Smoking cessation policy
25	Birth control availability/prescription
26	Wellness programs tied to health insurance premiums
27	I view quality/affordable housing as a health care issue
28	Transportation
29	Housing for low income
30	Drug usage
31	Transportation to doctor visits
32	Availability to our physicians
33	Diabetic care/obesity
34	Family planning services
35	Alcohol abuse
36	Smoking during pregnancy
37	Motivation of patients to improve
38	Patient education
39	Less red tape to get in home services
40	Compliance: obesity, drugs, diabetes, etc.

Community Health Needs Assessment

Atchison County, KS - Weakness (White Cards) N=34

#	Today: What are the weaknesses of our community that contribute to health?
41	Transportation
42	Economic conditions
43	Access to healthcare - getting to physicians
44	Nutrition education
45	Job opportunities
46	Education - health
47	Mental health care
48	Access to healthcare
49	Nutrition education
50	Minor med
51	ER
52	Teen pregnancy rates
53	Drug use
54	Minor med in ED
55	Urgent care
56	Minor med
57	Obesity
58	ER services
59	Binge drinking/smoking
60	Mammo services
61	Uninsured
62	Access to mental healthcare
63	Transportation services
64	Quality of care
65	Obesity
66	Drug abuse
67	Alcohol
68	Smoking
69	Sex education
70	Diabetes
71	Mammos
72	ED
73	Poverty
74	Uninsured
75	Smoking/tobacco
76	Specialty services
77	Mammograms
78	Drug abuse (prescription)
79	ER services
80	Urgent care
81	Mental health

Community Health Needs Assessment

Atchison County, KS - Weakness (White Cards) N=34

#	Today: What are the weaknesses of our community that contribute to health?
82	Transportation services
83	Community attitude regarding health/wellness/exercise
84	Wellness/nutrition counseling services
85	Access to psychiatry/mental health professionals
86	Making our community pedestrian friendly
87	Access to nutrition, health foods
88	Reduce crime
89	Smoking - especially pregnant
90	Obesity
91	Exercise/inactivity
92	Mental illness treatment
93	Drug abuse
94	Access/utilization of physical activity options
95	Tobacco free living
96	Maternal, post maternal care, lactation support
97	Access to mental health services
98	Target persons at or below poverty line and see what services they need
99	Target elected officials to make tobacco policies more stringent
100	Send uninsured people to community health clinic
101	Spend more money on health at county level
102	Access to art - turn to it instead of addictions
103	Lower use of drugs/smoking/eating
104	Help from mental health providers
105	Need more natural family planning information available
106	Senior housing
107	Healthy restaurant menu
108	Better jobs locally, increase wages
109	Management people - live locally
110	Business offer competitive insurance
111	People's lack of insurance
112	Diabetic care
113	Dialysis
114	Derm
115	OBGYN
116	Pediatrician
117	Mental health
118	High level of peer health behavior - smoking/tobacco/obesity
119	Senior living availability/affordability
120	Drugs
121	Sex education
122	Poverty/jobs

Community Health Needs Assessment

Atchison County, KS - Weakness (White Cards) N=34

#	Today: What are the weaknesses of our community that contribute to health?
123	Geriatric
124	ER - urgent care
125	Mental health
126	Poverty and health education
127	More mental health
128	Derm
129	Improving elder care
130	Exercise
131	Making aware of services available
132	Awareness of strengths and services
133	Nursing home/elder care
134	Add specialists
135	Urgent care
136	Behavioral health
137	Prenatal care/education
138	Mental health providers
139	Social/economic
140	Drugs/Tobacco
141	Need more specialty options - dermatology/psych
142	Improve geriatric care/nursing home
143	ER/urgent care wait times
144	Obesity/exercise
145	Diet/nutrition
146	Single moms
147	Sharps disposal awareness
148	Dermatologist on staff or as visiting specialist
149	Nutrition
150	Vision
151	Transportation
152	Diabetic monitoring
153	More eye screening
154	Focus on prevention vs clinical care
155	Family structure
156	Poverty/socioeconomics
157	Community collaboration
158	Invest for long term
159	Specialties
160	Behavioral health
161	Emergency department
162	Pregnant moms smoking
163	Obesity

Community Health Needs Assessment

Atchison County, KS - Weakness (White Cards) N=34

#	Today: What are the weaknesses of our community that contribute to health?
164	Drugs
165	Smoking cessation
166	Mental health
167	Smoking
168	Unwed mothers
169	Suicide
170	Uninsured
171	Obesity
172	Drug Abuse
173	Visiting specialists - OBGYN/derm
174	Nutrition
175	Obesity
176	Primary care providers
177	Obesity
178	Uninsured
179	Need doctors
180	Preventable hospital stays
181	Economic development
182	Mental health
183	Poverty
184	Emergency room
185	Preventable hospital stays
186	Mental health services
187	Preventative care services/how do you educate?
188	Uninsured
189	Obesity/drugs/single moms
190	Smoking
191	Economics - too many households below average economic level
192	Smoking related illnesses
193	Obesity rate
194	Family structure
195	Access to healthy lifestyles through proper nutrition

Atchison County Community Health Needs Assessment Meeting

4.26.2016

N=34

Community Members Present:

- Parents
- Senior caregivers
- Elected officials
- Business owners
- Farmers
- Providers

TAB 1: Demographic Profile

- There are the “have” and “have-nots” in our county

TAB 3: Educational Profile

- Providers are getting referrals from the school nurses
- People think the school lunches are pretty healthy
- Sex education in schools is improving

TAB 4: Maternal and Infant Profile

- There is a high number of pregnant women smoking and unwed mothers

TAB 6: Behavioral Health Profile

- The college is not causing the binge drinking numbers

TAB 10: Preventive Quality Measures Profile

- Have a YMCA, not sure why the access to exercise number is so high

Primary Research:

- Chiropractor, home health, hospital and school representatives all here (good perception)

STRENGTHS:

- Access to exercise
- Inpatient services
- Pharmacy
- Medical staff
- Up-to-date hospital facility
- Community engagement
- Have an FQHC
- Grants received for sidewalks, trails, streets, curbs, YMCA
- School nursing
- Home health and hospice
- Head start program

- Administrative staff
- Live Well Live Atchison
- Rehab services
- Continuum of care providers
- Access to education
- Growing young professionals

WEAKNESSES:

- Healthcare transportation
- Healthy policy priority (city/county)
- Mental health
- Affordable housing
- Tobacco use
- Uninsured
- Senior living/geriatric
- Parenting/family structure
- Emergency services/urgent care
- Education of services available
- Economic development
- Alcohol/drug abuse (meth, rx, opioids, heroin)
- Specialists (dialysis, derm, obgyn, peds, psychiatry, diabetic educator)
- Obesity (nutrition, fitness, wellness coach)
- Pedestrian friendly
- Sharps disposal
- Mammographies

Public Notice and Invitation

[VWV Consultants LLC]

Round #2 Community Health Needs Assessment – Atchison Hospital

Media Release 02/23/2016

Over the next three months, Atchison Hospital will be updating the 2013 Atchison County (Atchison, KS) Community Health Needs Assessment (CHNA). (*Note:* This assessment update is a follow-up to meet final IRS regulations released on 01/02/2015, requiring all 501(c)(3) hospitals to conduct a community health needs assessment and adopt an implementation strategy at least once every three years).

The goal of this assessment update is to understand progress in addressing community health needs cited in the 2013 CHNA report and to collect up-to-date community health perceptions. To accomplish this work, a short online survey has been developed:

<https://www.surveymonkey.com/r/AtchisonCHNA2016>

All community residents and business leaders are encouraged to **complete the 2016 online CHNA survey by Friday, April 8th** and to attend the upcoming scheduled **Town Hall on Tuesday, April 26th from 6-8:00pm at Atchison Hospital**. “We hope that the community and health professionals will take advantage of this opportunity to provide input into the future of healthcare delivery in our county,” comments John Jacobson, CEO.

Vince Vandelaar, MBA (VVV Consultants LLC, an independent research firm from Olathe, Kansas) has been retained to conduct this countywide research. If you have any questions about CHNA activities, please call (913) 367-2131.

From: John Jacobson

Date: February 23rd, 2016

To: Community Leaders, Providers and Hospital Board and Staff

Subject: CHNA Round #2 Online Survey

Atchison Hospital is partnering with other community health providers to update the 2013 Community Health Needs Assessment. (*Note:* This assessment update is a follow-up to meet final IRS regulations released on 01/02/2015, requiring all 501(c)(3) hospitals to conduct a Community Health Needs Assessment and adopt an implementation strategy at least once every three years).

Your feedback and suggestions regarding community health delivery are very important to collect in order to complete the 2016 Community Health Needs Assessment and implementation plan updates.

To accomplish this work, a short online survey has been developed:

<https://www.surveymonkey.com/r/AtchisonCHNA2016>

CHNA Round #2 due date for survey completion is April 8th, 2016. All responses are confidential. Thank you in advance for your time and support in participating with this important request.

Sincerely,
John Jacobson
CEO

Press Release #2

COMMUNITY CALENDAR: Public Invited to Attend Atchison Hospital Town Hall to Improve Healthcare

WHAT: Atchison Hospital will host a town hall meeting to gather the public's input about identifying unmet community health needs and improving the delivery of healthcare in Atchison Hospital's primary service area. A light dinner will be provided.

WHO: All members of the community interested in the future of healthcare delivery are invited to attend. Vince Vandelaar of VVV Consultants LLC from Olathe, Kansas, will facilitate the meeting.

WHEN: Tuesday, April 26 from 6:00-8:00p.m.

WHERE: Atchison Hospital

HOW: RSVP by contacting Gary Foll at 913-367-2131

Date: April 1, 2016

Dear Community Member,

You may have heard that Atchison Hospital is partnering with other healthcare providers to perform a Community Health Needs Assessment. We need your input on the current state of health delivery in our community and your thoughts on the most important health needs that our community needs to address.

On Tuesday, April 26, you are invited to attend an Atchison Hospital (Primary Service Area) Town Hall meeting. We have retained the services Vince Vandehaar and VVV Consultants LLC from Olathe, KS, to facilitate this meeting and prepare our report.

Your input is valuable, and will be incorporated into our final report. Please join us on **Tuesday, April 26 from 6:00-8:00p.m.** at Atchison Hospital. A light dinner will be served starting at 5:30p.m.

We look forward to seeing you at the Town Hall meeting, and appreciate your input.

Sincerely,

John Jacobson
CEO



Community Health Needs Assessment

Atchison Hospital - Community Town Hall Meeting

Atchison Hospital and
Live Well Live Atchison
will be hosting a
Town Hall Meeting on Tuesday, April 26
from 6:00 to 8:00p.m.
at Atchison Hospital.

Public is invited to attend.
A light dinner will be provided.

Please join us for this opportunity to share your opinions
and suggestions to improve health care delivery
in Atchison Hospital's community.

Thank you in advance for your participation.

Detail Primary Research Primary Service Area

[VVV Consultants LLC]

Community Health Needs Assessment Round #2 Community Feedback

Methodology

A community feedback survey was created on behalf of the CHNA client to gather primary service area stakeholder feedback on health perception and progress in addressing previous CHNA community needs. All community residents were encouraged to take the survey online by entering the following address into their personal browser:

<https://www.surveymonkey.com/r/AtchisonCHNA2016>.

In addition, an invite letter was sent to all primary service area stakeholders (i.e. Schools, County, City, Clergy, Public Health Leaders).

Below is a summary of public response:

Atchison Hospital (Primary Service Area) Atchison Co, KS N=156		
10. For reporting purposes, are you involved in or are you a ...?	Option C Stakeholders Round #2 Bottom 2 Boxes	Atchison Co N=156
Board Member	4.3%	6.3%
Business / Merchant	5.4%	5.5%
Case Manager / Discharge	0.6%	0.8%
Civic Club / Chamber	4.1%	5.9%
Charitable Foundation	2.3%	1.7%
Clergy / Congregational Leader	1.1%	0.0%
College / University	2.0%	3.4%
Consumer Advocate	1.2%	2.5%
Consumers of Health Care	8.7%	7.1%
Dentist	0.2%	0.0%
Economic Development	1.2%	2.1%
Education Official / Teacher	4.2%	5.5%
Elected Official (City / County)	1.4%	0.8%
EMS / Emergency	1.6%	0.8%
Farmer / Rancher	4.0%	2.9%
Health Department	1.7%	1.7%
Hospital	12.7%	10.1%
Housing / Builder	0.4%	1.3%
Insurance	0.9%	2.5%
Labor	1.4%	0.8%
Law Enforcement	0.6%	0.8%
Low Income / Free Clinics	0.7%	2.1%
Mental Health	1.5%	2.1%
Nursing	8.8%	5.9%
Other Health Professional	6.6%	6.3%
Parent / Caregiver	11.0%	9.2%
Pharmacy	0.6%	0.8%
Physician (MD / DO)	0.6%	0.8%
Physician Clinic	1.4%	2.1%
Press (Paper, TV, Radio)	0.3%	0.8%
Senior Care / Nursing Home	1.4%	0.4%
Social Worker	1.0%	1.7%
Veteran	1.7%	0.0%
Welfare / Social Service	0.6%	0.8%
Other (please note below)	3.7%	4.2%
TOTAL	100.0%	100.0%

KEY - CHNA Open End Comments				
CODE	Physician Specialty		CODE	Physician Specialty
ALLER	Allergy/Immunology		ONC	Oncology/Radiation Oncology
AES	Anesthesia/Pain		OPHT	Ophthalmology
CARD	Cardiology		ORTH	Orthopedics
DERM	Dermatology		ENT	Otolaryngology (ENT)
EMER	Emergency		PATA	Pathology
ENDO	Endocrinology		PEDS	Pediatrics
FP	Family Practice (General)		PHY	Physical Medicine/Rehabilitation
GAS	Gastroenterology		PLAS	Plastic/Reconstructive
SUR	General Surgery		PSY	Psychiatry
GER	Gerontology		PUL	Pulmonary
HEM	Hematology		RAD	Radiology
IFD	Infectious Diseases		RHE	Rheumatology
IM	Internal Medicine		VAST	Thoracic/Cardiovascular/Vascular
NEO	Neonatal/Perinatal		URL	Urology
NEP	Nephrology		MDLV	Mid-Level
NEU	Neurology		SURG	Surgery
NEUS	Neurosurgery		TEL	Telemedicine
OBG	Obstetrics/Gynecology (Delivery)			

KEY - CHNA Open End Comments				
Code	Healthcare Themes		Code	Healthcare Themes
VIO	Abuse/Violence		NURSE	More Nurse Availability
ACC	Access to Care		NEG	Neglect
AGE	Aging (Senior Care/Assistance)		NH	Nursing Home
AIR	Air Quality		NUTR	Nutrition
ALC	Alcohol		OBES	Obesity
ALT	Alternative Medicine		ORAL	Oral Surgery
ALZ	Alzheimers		ORTHOD	Orthodontist
AMB	Ambulance Service		OTHR	Other
ASLV	Assisted Living		OP	Outpatient Services/Surgeries
AUD	Auditory		OZON	Ozone
BACK	Back/Spine		PAIN	Pain Management
BD	Blood Drive		PARK	PARKING
BRST	Breastfeeding		PHAR	Pharmacy
CANC	Cancer		DOCS	Physicians
CHEM	Chemotherapy		FLU	Pneumonia / Flu
KID	Child Care		FOOT	Podiatrist
CHIR	Chiropractor		POD	PODIATRIST
CHRON	Chronic Diseases		POV	Poverty
CLIN	Clinics (Walk-In, etc.)		PNEO	Prenatal

KEY - CHNA Open End Comments

Code	Healthcare Themes	Code	Healthcare Themes
COMM	Communication	PREV	Preventative Healthcare
CORP	Community Lead Healthcare	PRIM	Primary Care:
CONF	Confidentiality	PROS	Prostate
DENT	Dentists	DOH	Public Health Department
DIAB	Diabetes	QUAL	Quality of care
DIAL	Dialysis	REC	Recreation
DUP	Duplication of Services	RESP	Respiratory Disease
ECON	Economic Development	NO	Response "No Changes," etc.
EMER	Emergency Room	SANI	Sanitary Facilities
EMS	EMS	SNUR	School Nurse
EYE	Eye Doctor/Optomtrist	STD	Sexually Transmitted Diseases
FAC	Facility	SMOK	Smoking
FAM	Family Planning Services	SS	Social Services
FEM	Female (OBG)	SPEC	Specialist Physician care
FINA	Financial Aid	SPEE	Speech Therapy
FIT	Fitness/Exercise	STRK	Stroke
ALL	General Healthcare Improvement	DRUG	Substance Abuse (Drugs/Rx)
GEN	General Practice	SUIC	Suicide
GOV	Government	TPRG	Teen Pregnancy
HRT	Heart Care	THY	Thyroid
HIV	HIV/AIDS	TOB	Tobacco Use
HH	Home Health	TRAN	Transportation
HSP	Hospice	TRAU	Trauma
HOSP	Hospital	TRAV	Travel
MAN	Hospital Management	ALCU	Underage Drinking
INFD	Infidelity	INSU	Uninsured/Underinsured
IP	Inpatient Services	URG	Urgent Care/After Hours Clinic
LEAD	Lead Exposure	VACC	Vaccinations
BIRT	Low Birth Weight	VETS	Veteran Care
LOY	Loyalty	WAG	Wages
MAMO	Mammogram	WAIT	Wait Times
MRKT	Marketing	H2O	Water Quality
STFF	Medical Staff	WELL	Wellness Education/Health Fair
BH	Mental Health Services	WIC	WIC Program

CHNA Community Feedback 2016

Atchison Hospital (Primary Service Area) - Atchison County, KS N=156

ID	Zip	Overall HC Rating	c1	c2	c3	Are there healthcare services in Atchison County that you feel need to be improved and/or changed?
1051	66023	Good	ACC	CLIN	EMER	I would like to see access to extended (late evening, weekend) hours for non-emergent healthcare (other than the Atchison Hospital ER).
1140	66434	Fair	ACC	EXER	WELL	Access to more family friendly parks and recreation
1043	66002	Good	ACC	GP	PA	Need more access to general practitioners, whether we get more doctors or PAs or extend service hours.
1048	66002	Fair	AWARE			I believe the services are available, just lazy citizens that don't use the services!
1063	66002	Very Poor	BILL	STAFF		Atchison Hospital undermines the entire system by billing for services not provided, overbilling and harassing and filing lawsuits against patients who have trouble meeting payments on their bills. Even if you sign a payment agreement and continue to make the agreed payments that does not stop them from sending your account to a collections agency in Grand Island Neb. and taking you to court. The result - people avoid needed medical care and follow ups for fear of being attached by the Hospital Bill Collectors. The Atchison Hospital is a non-profit hospital and get great benefits from the Federal Government in this tax exempt status - and how to they fulfill their commitment to serve the community? By suing as many of their patients as possible.
1149	66002	Fair	CLIN	ACC	INSUR	We have seen the expansion of the FQHC here in town. This should help people who do not have insurance have access to a primary care clinic.
1084	66002	Fair	CLIN	INSUR		The Free Clinic should see patients who are without health insurance regardless of income. I was turned away because of income level, yet needed treatment for shingles. Suffered through the disease on own.
1109	66002	Fair	CLIN	URG	EMER	More hours for the community health clinic Urgent care out of the ED
1008	66002	Fair	CLIN	URG	TRANS	more clinics, urgent care facility separate from the hospital, after hours urgent care, wheel chair van transports
1111	66023	Fair	CLIN	WAIT		Longer clinic hours and Saturday options for those that work thru the week or have kids in school.
1122	66066	Fair	CLIN	WAIT		We need to have clinic hours that can be used for people who work outside of the community. Saturday hours 9-Noon, and extend the clinic hours during the week to 7pm.
1090	66023	Good	CLIN			I would like to see more outreach clinics.
1096	66002	Fair	CLIN			Men's health clinic.
1098	66002	Very Good	COMM	DOCS		Increase Communication between physicians local and outside our healthcare needs to be more cohesive for patients - there needs to be better communication between providers in the community as well as consultants. We need more psychiatric coverage, especially for adolescents.
1077	66002	Fair	COMM	MH		
1128	66002	Fair	DAIL	URG	EMER	Dialysis availability Dedicated urgent care, not part of ED
1012	66002	Fair	DENT	INSUR		Dental care available to Medicaid and uninsured clients
1118	64098	Fair	DENT			Dental needs
1148	66002	Good	DERM	DIAL	ONC	dermatology, dialysis, oncology
1132	64484	Good	DERM	OBG	DIAL	Additional services are needed ie) dermatology, gynecology, possibly dialysis)
1001	66002	Good	DIAL			Dialysis
1041	66002	Good	DIAL			Dialysis assistance
1032	66002	Good	DOCS	EQUIP		More doctors so you aren't seeing whoever is available in the group. Keep updated equipment and competitive services available.
1020	66002	Fair	DOCS	STAFF		Doctors need to be more available. A lot of the healthcare workers I have come into contact with have acted & looked unprofessional (i.e. I-don't-care demeanor and sloppy clothes).
1076	66002	Poor	DOCS	WAIT	EMER	Need good doctors that are available to see their patients. Many doctors at the Atchison Hospital/Clinics are very hard to get an appointment with when you are sick or hurt. Hate to have to spend money to go to Emergency Room for a minor illness because I can't make an appointment with my regular family doctor. I usually go out of town to Urgent Care.
1055	66002	Good	DOCS	WELL		There aren't enough practitioners to meet the need of patients. There needs to be a focus on health and wellness and not illness and medication, but there is none of that either.
1028	66002	Good	DOCS			I like small private practices. More of those options would be nice.
1062	66002	Fair	DOCS			more physicians

CHNA Community Feedback 2016

Atchison Hospital (Primary Service Area) - Atchison County, KS N=156

ID	Zip	Overall HC Rating	c1	c2	c3	Are there healthcare services in Atchison County that you feel need to be improved and/or changed?
1052	66002	Fair	DOH	STAFF	INSUR	Yes they do need to be improved. As for Atchison County Health Dep. nothing needs changed. They are great to work with. If this is referring to the Atchison Dr. very hard to work with. You can call several times for a call back but you may or may not get a call. As for the Medical and Dental clinic they are at times hard to work with. At times are rude.
1141	66002	Fair	ED	PREV		Health Education could be increased, specifically in schools. I think sex education is important not only to help prevent the spread of STI's but to also help protect against unwanted teen pregnancies.
1152	66002	Fair	EMER	CLIN		Emergency care. Perhaps a walk in clinic.
1033	66016	Very Poor	EMER			The community respect for the Atchison Hospital - when you hear people say "planning on going to ER then plan on 4-6 hours but you might as well drive somewhere else first you will get seen there
1071	66002	Good	EMS	DOH	DENT	The EMS service needs improvement. I wish the county would partner with city FD to deliver better service. We also need to improve our county health dept. as they seem to cut services all the time. Also, we need more access to Medicaid dental care.
1011	66002	Fair	EMT	WAIT		EMT's need to be more on top of things they are very slow when it comes to getting things done from patient in to out.
1123	66002	Good	EXER	WELL		more family orientated safe activities to increase exercise; putt putt golf, more safe walking trails, etc....
1125	66002	Fair	FACIL	WAIT		Yes very much so. Fix the phone and have a real human answer people when they call in for an appointment. Sick people should not have to wait hours and hours for a return call.
1031	66002	Poor	FACIL			The phone system for the doctors offices. Charging for items that should be included in the office visit.
1068	66092	Fair	FACIL			The phone system when trying to make an appointment is terrible.
1129	66002	Good	IM	CLIN		Need FULL time Internal Medicine physician in the clinic. Preferably male and willing to see adult patients of all ages.
1016	66002	Very Good	MH	INSUR		More mental health services including child and adult psychiatry for both medicaid and commercial insurance.
1110	66002	Fair	MH			I have been Agoraphobic with panic attacks for most of my life. I wished they had a mental health facility for people like me. I wished a neutral place could be set up for group therapy, with other Agoraphobics like me, to share our burdens and daily problems. It's very lonely and scary at times for us and being able to talk with others who know first hand what it's like to be like us, would be a huge positive thing to help us get our lives back.
1057	66002	Fair	MH			Involuntary mental health hospital beds.
1094	66002	Very Good	N/A			For a small town, I feel fortunate that health care needs for my husband and me are adequately met in this town.
1154	66002	Very Good	N/A			I think we have exceptional health care in our community.
1056	66002	Very Good	N/A			No
1072	66088	Fair	N/A			No
1002	66002	Very Good	N/A			None come to mind.
1070	66002	Very Good	N/A			None of which I'm aware
1124	66002	Good	N/A			Not particularly
1035	66002	Fair	N/A			There is always room for improvement. We are very blessed have the healthcare we have
1042	66002	Fair	OBG	SPEC		Need a full time OBGYN that lives here, and more specialty outreach coming to our hometown.
1007		Good	OBG			oB
1039	66002	Fair	PEDS	DERM		We need a pediatrician here instead of having to go out of town. Also a dermatologist in town would be nicer instead of having to go out of town.
1075	66002	Fair	PEDS	DOCS	BILL	The lack of pediatric care in Atchison is worrisome. My family (and many others) take our kids to Lakeside Pediatrics in St. Joseph due to lack of providers when Dr. Johanning left. Also, it is worrisome that it takes almost three days to get in to see a provider in Atchison. Also, the billing department at the Atchison Hospital makes routine mistakes, especially when it comes to urgent vs. emergent care. The difference needs to be effectively communicated.
1091	66002	Good	PEDS	URG	EMER	We need a Pediatrician. An urgent care clinic other than the ER in the evening.
1029	66002	Good	PEDS			I would love to see a pediatrician brought to Atchison. We have read a ton of community posts, heard feedback, and had conversations and truly think this would set us apart even more for a small community.

CHNA Community Feedback 2016

Atchison Hospital (Primary Service Area) - Atchison County, KS N=156

ID	Zip	Overall HC Rating	c1	c2	c3	Are there healthcare services in Atchison County that you feel need to be improved and/or changed?
1078	66002	Good	PEDS			need a pediatrician
1073	66002	Good	SMOK	ED	WELL	Services that target tobacco cessation programs, promoting active lifestyles, and educating local leaders on the importance of health in the community.
1021	66002	Fair	SPEC	DOCS		more specialty doctors that are hosp staff, not from another hosp. make our hosp a one stop shop so to speak
1102	66002	Fair	SPEC			Basic care is OK, but beyond that we prefer going to Kansas City specialists.
1003	66002	Good	STAFF	HIPAA		When checking in for services at the hospital, it is uncomfortable signing in on a form that can be viewed by the general public. I do not understand why this information could not be seen paid staff or at least handled by volunteer in a private matter when they hand me a beeper. In public settings in the community, I have heard people say "I saw that X was at the hospital today according to the sign-in sheet." My healthcare should be private; I now see this happening as you have created a central waiting room for physicians.
1085	66002	Fair	STAFF	WAIT		Follow-up. 1. After a visit to doctor, who tells you they will schedule you lab or x-ray, no arrangement is made and you are not called. The patient must call back to get these services scheduled. 2. Doctor sent patient to x-ray from office visit but was so confident that nothing would be found, office closed. Blood clot was found and no one was available to say what to do next.
1087	66002	Poor	STAFF			MORE NURSES AND AIDS FOR THE HOSPITAL NOT STAFF ENOUGH
1040	66002	Poor	STAFF			Please have a real person answer phones in the clinic and if you can't do that then at least ask your staff to call patients back
1054	66002	Very Good	SURG			General surgeon should do more complex cases.
1019	66002	Good	TRANS	PULM	PEDS	Transportation assistance for hospital and therapy appointments. Need a pulmonologist at the hospital more often. Need a pediatrician at the hospital
1142	66002	Fair	URG	CLIN	EMER	urgent care clinic is great except for the price of going there, it should only be copay for private insurance. Also needs to be out of the ER area. Need separate place for urgent care clinics.
1105	66035	Good	URG	EMER		A stand alone after hours/ urgent care/ minor medical that is not in the ED/ER.
1014	66002	Fair	URG	PEDS	MH	Urgent care Pediatrics Psychiatry Wound care Indoor and outdoor year round adult recreational promote community daily activity and an active year round active lifestyle for all age ranges of adult life. Organized adult sports leagues
1103	66002	Good	URG	PREV	WELL	Better access to urgent care services. More information about CDC recommended vaccines. As a parent of preteens, I never received any information about the HPV vaccine from my children's healthcare provider at Atchison Internal Medicine and Family Practice. I found out other ways and then had to ask our doctor for it.
1074	66002	Fair	URG	WAIT		Urgent/minor med care is a big improvement!!! Thank You for offering this instead of making us drive to other cities. Now...if only we could solve the issue of trying to get a daytime doctor appoint without having wait up to a week.
1024	66002	Good	WAIT	DOCS		Weekend hours for dr offices.
1115	66002	Fair	WAIT	EMER	TRANS	The wait for the ER room in by far too long. We do not have a taxi service anymore and for the elderly it is very hard for some to get to the Atchison Hospital to see doctor or have tests run. Maybe the hospital needs a shuttle.
1155	66002	Good	WAIT	EMER		hospital wing. It was hard to understand what was happening next and why.
1010	66002	Very Good	WAIT	STAFF	EMER	It is very difficult to make appointments to see medical providers in the clinic. The phone system is not Customer friendly. The minor med in the ED Department still is not working well
1088	66002	Good	WAIT			ABILITY TO GET IN TO SEE CARE PROVIDER EASILY AND QUICKLY
1050	66002	Fair	WAIT			Everytime you call to make appt when your sick you can't get in that day.. very frustrating
1086	66002	Fair	WAIT			Trying to get in to see a doctor when you are sick, and not having to wait 1-2wks or more for an appointment.

CHNA Community Feedback 2016

Atchison Hospital (Primary Service Area) - Atchison County, KS N=156

ID	Zip	Overall HC Rating	c1	c2	c3	Are there healthcare services in Atchison County that you feel need to be improved and/or changed?
1060	66002	Good	WELL	INSUR	CLIN	I would like to see more proactive healthcare services like tobacco prevention, obesity prevention, etc. Also, there is a severe lack of medicaid eligible dental options for people less fortunate. The community health clinic I believe might be addressing that need. The ambulance service that Atchison County provides needs major improvement so that they are working with City of Atchison FD, Atchison Hospital, and Atchison County. The new EMS center is too far away from everyone. The County Health Dept. is not ran very well, could they work under the community health clinic?
1097	66002	Good	WELL			Healthy Living Services. Hopefully this will be what Live Well, Live Atchison will be doing for the community in collaboration with other services already here in town.

CHNA Community Feedback 2016						
Atchison Hospital (Primary Service Area) - Atchison County, KS N=349						
ID	Zip	Overall HC Rating	c1	c2	c3	Throughout the past two years, did you or someone you know receive healthcare services outside of Atchison County? If yes, please specify the healthcare services received.
1135	66002	Good	ASTH	SPEC	CHILD	asthma specialist at childrens mercy
1027	66002	Good	CANC			Cancer care
1128	66002	Fair	CARD	DERM		Cardiology, Dermatology
1060	66002	Good	CARD	MIDAM	KU	They had heart issues and had to go see Mid America Cardiology at KU Med Center.
1021	66002	Fair	CARD	ONC	OBG	cardiology, oncology, gyn,
1036	66002	Good	CARD	ORTHO	SURG	Heart surgery and back surgery
1110	66002	Fair	CARD	PNEU	APPEN	I have had relatives and friends that were sent to bigger hospitals for their specific needs, including for heart issues, pneumonia, and appendix issues.
1042	66002	Fair	CARD			Cardiology
1010	66002	Very Good	CARD			cardiology
1149	66002	Fair	CARD			cardiology
1081	66017	Good	CLIN			clinic visit
1059	66002	Very Good	CYST	CARD	KID	Cystoscopy with Stent Placement & Removal of Kidney Stone
1012	66002	Fair	DENT			Dental
1079	64098	Good	DERM	CHILD	URG	Dermatologist, childrens mercy, urgent care,
1088	66002	Good	DERM			DEMOTOLOGY
1038	66002	Good	DERM			Dermatologist
1039	66002	Fair	DERM			dermatologist
1062	66002	Fair	DERM			dermatology
1105	66035	Good	DERM			dermatology
1131	66088	Fair	ELD	MAMM		elder care, mammography-digital
1028	66002	Good	EMER	DENT	GP	ER visit, dental work, dr visits
1075	66002	Fair	EMER	IP		Emergency Room care, inpatient admission
1073	66002	Good	EMS			They were told by the EMS that the Atchison Hospital could not help them.
1063	66002	Very Poor	ENDO	DENT	ORTHO	endocrinology, dental, orthopedic
1085	66002	Fair	GAS			gastroenterology
1031	66002	Poor	GP	DENT	URG	Hospital, Doctor and dental visits. Also urgent care
1003	66002	Good	GP	WAUL	PC	General care at another hospital. Most of my healthcare is out of town. In genral the quality of care is better. Exception: My primary care provider (Dr. Eplee) is six stars in service as well as his staff.
1033	66016	Very Poor	GP			Changed doctor & hospital so family can receive treatment when we are sick not days later
1020	66002	Fair	GP			doctor visit
1140	66434	Fair	HH	HOSP		Home Health and Hospice Care
1129	66002	Good	IM			Internal Medicine
1050	66002	Fair	KID			for kidney stones
1142	66002	Fair	KU	PULM		KU Med center for lung issues
1011	66002	Fair	KU	SURG		KU Back Surgery
1040	66002	Poor	MAMM	SURG		Mammogram and surgery
1077	66002	Fair	MOS	EMER	URG	Mosaic for Emergency and Urgent care; in patient at Mosaic
1071	66002	Good	MOS	EMS	ORTHO	They went to mosaic for a broken bone. The EMS told us that the Atchison Hospital could not handle it. Seriously? How can a hospital not handle a broken bone? Maybe it needs to improve its trauma services.
1112	66002	Good	MOS	KU		mosaic and ku med
1084	66002	Fair	MOS	STL	WCIHS	Mosaic, St. Luke's, WhiteCloud Indian Health Service
1109	66002	Fair	MOS			at Mosaic
1130	66002	Fair	MOS			Mosaic
1064	66041	Very Good	MOS			mosaic
1124	66002	Good	NEUR	SURG	STVL	Spinal surgery at Stormont Vail/ Spinal surgery at CHildren's Mercy/ Spinal surgery at KUMC
1056	66002	Very Good	NEUR			Hand Specialist
1002	66002	Very Good	NEUR			Migraine Headache Treatment
1048	66002	Fair	OBG			GYN
1122	66066	Fair	OBG			GYN services
1043	66002	Good	OBG			OB/Gyn
1078	66002	Good	OBG			OB/GYN
1141	66002	Fair	OBG			Obstetrics
1154	66002	Very Good	OBG			pregnancy care

CHNA Community Feedback 2016						
Atchison Hospital (Primary Service Area) - Atchison County, KS N=349						
ID	Zip	Overall HC Rating	c1	c2	c3	Throughout the past two years, did you or someone you know receive healthcare services outside of Atchison County? If yes, please specify the healthcare services received.
1076	66002	Poor	ONC	PULM	ENDO	Oncologist, Lung specialist, endocrinologist, dentist, Urgent Care, Out patient surgery, orthopedic, ear nose & throat.
1102	66002	Fair	ONC			Ongoing oncology treatment and follow-up
1086	66002	Fair	OP	IP		Outpt procedure & Inpt hospital stay.
1019	66002	Good	OPT	ENDO		specialized eye doctor, endocrinologist.
1155	66002	Good	OPT			eye care
1065	66002	Good	ORTH			Orthopedics
1005	66002	Fair	ORTHO	ENT	GP	hip replacement, ETN / general hospital care/ primary care
1115	66002	Fair	ORTHO	SURG		Major back surgery
1097	66002	Good	ORTHO			Hip replacement
1093	66002	Very Good	ORTHO			New hip
1052	66002	Fair	PAIN			Pain management
1138	66002	Very Good	PC	MOS		PCP @ Moscaic
1029	66002	Good	PEDS	CANC	DERM	Pediatrician; MOHs skin cancer removal, dermatologist, children's mercy icu, allergist for kiddos
1103	66002	Good	PEDS	CARD	URG	pediatric cardiology services, urgent care services
1034	66002	Fair	PEDS	ORTHO	SURG	pediatric orthopedic surgery
1123	66002	Good	PROV			referred to Providence Hospital by provider
1087	66002	Poor	QUAL			HIGHER QUALITY OF CARE
1125	66002	Fair	SPEC	PC		Speciality doctors and primary care because I could not get an appointment
1143	66002	Fair	SPEC	POD		Specialist for foot care
1145	66002	Good	SPEC			SPECIALIST SERVICES NOT AVAILABLE IN ATCHISON
1156	66002	Good	SPEC			Specialty Care
1068	66092	Fair	STJ	SURG	EMER	I have multiple friends/family members that choose Mosaic in St. Joe instead of Atchison Hospital for surgeries/emergencies/urgent care.
1118	64098	Fair	STL			St Lukes Medical
1136	66002	Very Good	STVL			Stormont-Vail for stroke
1001	66002	Good	SURG	DIAB		Back surgery, diabetic foot surgery
1157	66002	Fair	SURG	OBG	GAS	General Surgery, Gynecology, GI
1057	66002	Fair	SURG	ONC		surgical, oncology
1030	66002	Good	SURG			Surgeon
1072	66088	Fair	SURG			Surgery
1074	66002	Fair	URG	SPEC		urgent care and appointments with specialists
1091	66002	Good	URG	STJ		Urgent care on Saturday in St Joseph

2016 Community Health Needs Assessment - Atchison County

Let Your Voice Be Heard!

Atchison Hospital, in collaboration with Live Well Live Atchison and the Atchison County Health Department, is updating its 2013 Community Health Needs Assessment (CHNA). Your feedback from this survey will help us identify the current health issues in our community and while your participation is voluntary, we would greatly appreciate your input. All answers will be kept confidential.

All 2016 Community Health Needs Assessment feedback is due by Friday, April 8th. Thank you for your participation.

2016 Community Health Needs Assessment - Atchison County

Part I: Introduction

1. Three years ago, Atchison Hospital and the Atchison County Health Department completed a Community Health Needs Assessment (CHNA). This assessment identified a number of health needs for our community. Today, we are updating this assessment and would like to know how you rate the "Overall Quality" of healthcare delivery in our community?

	Very Good	Good	Fair	Poor	Very Poor
Health Rating:	<input type="radio"/>	<input type="radio"/>	<input type="radio"/>	<input type="radio"/>	<input type="radio"/>

2016 Community Health Needs Assessment - Atchison County

2. Are there healthcare services in Atchison County that you feel need to be improved and/or changed? (Please be specific.)

2016 Community Health Needs Assessment - Atchison County

3. From our last CHNA (2013), a number of health needs were identified as priorities. Are any of these 2013 CHNA needs still an "Ongoing Problem" in Atchison County?

	Not a Problem Anymore	Somewhat of a Problem	Major Problem
Drug abuse (focus on prescription drugs)	<input type="radio"/>	<input type="radio"/>	<input type="radio"/>
Access to mental health providers	<input type="radio"/>	<input type="radio"/>	<input type="radio"/>
Economic development	<input type="radio"/>	<input type="radio"/>	<input type="radio"/>
Urgent care services	<input type="radio"/>	<input type="radio"/>	<input type="radio"/>
Obesity (nutrition and fitness)	<input type="radio"/>	<input type="radio"/>	<input type="radio"/>
School sex education	<input type="radio"/>	<input type="radio"/>	<input type="radio"/>
Alcohol abuse (excessive drinking)	<input type="radio"/>	<input type="radio"/>	<input type="radio"/>
Affordable transportation for health services	<input type="radio"/>	<input type="radio"/>	<input type="radio"/>
Medicaid dental coverage for the uninsured	<input type="radio"/>	<input type="radio"/>	<input type="radio"/>
Smoking prevention	<input type="radio"/>	<input type="radio"/>	<input type="radio"/>

2016 Community Health Needs Assessment - Atchison County

4. Which 2013 CHNA health needs are most pressing today for improvement? (Please select top three needs.)

- | | |
|---|--|
| <input type="checkbox"/> Drug abuse (focus on prescription drugs) | <input type="checkbox"/> School sex education |
| <input type="checkbox"/> Access to mental health providers | <input type="checkbox"/> Alcohol abuse (excessive drinking) |
| <input type="checkbox"/> Economic development | <input type="checkbox"/> Affordable transportation for health services |
| <input type="checkbox"/> Urgent care services | <input type="checkbox"/> Medicaid dental coverage for the uninsured |
| <input type="checkbox"/> Obesity (nutrition and fitness) | <input type="checkbox"/> Smoking prevention |

2016 Community Health Needs Assessment - Atchison County

5. How would Atchison County residents rate each of the following services? (Please select one box per row.)

	Very Good	Good	Fair	Poor	Very Poor	N/A
Ambulance Services	<input type="radio"/>	<input type="radio"/>	<input type="radio"/>	<input type="radio"/>	<input type="radio"/>	<input type="radio"/>
Child Care	<input type="radio"/>	<input type="radio"/>	<input type="radio"/>	<input type="radio"/>	<input type="radio"/>	<input type="radio"/>
Chiropractors	<input type="radio"/>	<input type="radio"/>	<input type="radio"/>	<input type="radio"/>	<input type="radio"/>	<input type="radio"/>
Dentists	<input type="radio"/>	<input type="radio"/>	<input type="radio"/>	<input type="radio"/>	<input type="radio"/>	<input type="radio"/>
Emergency Room	<input type="radio"/>	<input type="radio"/>	<input type="radio"/>	<input type="radio"/>	<input type="radio"/>	<input type="radio"/>
Eye Doctor / Optometrist	<input type="radio"/>	<input type="radio"/>	<input type="radio"/>	<input type="radio"/>	<input type="radio"/>	<input type="radio"/>
Family Planning Services	<input type="radio"/>	<input type="radio"/>	<input type="radio"/>	<input type="radio"/>	<input type="radio"/>	<input type="radio"/>
Home Health	<input type="radio"/>	<input type="radio"/>	<input type="radio"/>	<input type="radio"/>	<input type="radio"/>	<input type="radio"/>
Hospice	<input type="radio"/>	<input type="radio"/>	<input type="radio"/>	<input type="radio"/>	<input type="radio"/>	<input type="radio"/>

2016 Community Health Needs Assessment - Atchison County

6. How would Atchison County residents rate each of the following? (Please select one per row.)

	Very Good	Good	Fair	Poor	Very Poor	N/A
Inpatient Services	<input type="radio"/>	<input type="radio"/>	<input type="radio"/>	<input type="radio"/>	<input type="radio"/>	<input type="radio"/>
Mental Health Services	<input type="radio"/>	<input type="radio"/>	<input type="radio"/>	<input type="radio"/>	<input type="radio"/>	<input type="radio"/>
Nursing Home	<input type="radio"/>	<input type="radio"/>	<input type="radio"/>	<input type="radio"/>	<input type="radio"/>	<input type="radio"/>
Outpatient Services	<input type="radio"/>	<input type="radio"/>	<input type="radio"/>	<input type="radio"/>	<input type="radio"/>	<input type="radio"/>
Pharmacy	<input type="radio"/>	<input type="radio"/>	<input type="radio"/>	<input type="radio"/>	<input type="radio"/>	<input type="radio"/>
Primary Care	<input type="radio"/>	<input type="radio"/>	<input type="radio"/>	<input type="radio"/>	<input type="radio"/>	<input type="radio"/>
Public Health Department	<input type="radio"/>	<input type="radio"/>	<input type="radio"/>	<input type="radio"/>	<input type="radio"/>	<input type="radio"/>
School Nurse	<input type="radio"/>	<input type="radio"/>	<input type="radio"/>	<input type="radio"/>	<input type="radio"/>	<input type="radio"/>
Specialists	<input type="radio"/>	<input type="radio"/>	<input type="radio"/>	<input type="radio"/>	<input type="radio"/>	<input type="radio"/>

7. Throughout the past two years, did you or someone you know receive healthcare services outside of Atchison County?

Yes

Do Not know

No

If yes, please specify the healthcare services received.

2016 Community Health Needs Assessment - Atchison County

8. Are there any other health needs from the list below that need to be discussed at our upcoming CHNA Town Hall meeting? (Please select all that need to be on our agenda.)

Abuse / Violence

Mental Illness

Suicide

Alcohol

Nutrition

Teen Pregnancy

Cancer

Obesity

Tobacco Use

Diabetes

Ozone (Air)

Vaccinations

Drugs / Substance Abuse

Physical Exercise

Water Quality

Family Planning

Poverty

Wellness Education

Heart Disease

Respiratory Disease

Lead Exposure

Sexually Transmitted Diseases

Other (please specify)

2016 Community Health Needs Assessment - Atchison County

9. What is your home zip code?

2016 Community Health Needs Assessment - Atchison County

Demographics

10. For reporting purposes, are you involved in or are you a ...? (Please select all that apply).

- | | | |
|---|---|---|
| <input type="checkbox"/> Board Member | <input type="checkbox"/> Elected Official - City / County | <input type="checkbox"/> Other Health Professional |
| <input type="checkbox"/> Business / Merchant | <input type="checkbox"/> EMS / Emergency | <input type="checkbox"/> Parent / Caregiver |
| <input type="checkbox"/> Case Manager / Discharge Planner | <input type="checkbox"/> Farmer / Rancher | <input type="checkbox"/> Pharmacy |
| <input type="checkbox"/> Civic Club / Chamber | <input type="checkbox"/> Health Department | <input type="checkbox"/> Physician (MD / DO) |
| <input type="checkbox"/> Charitable Foundation | <input type="checkbox"/> Hospital | <input type="checkbox"/> Physician Clinic |
| <input type="checkbox"/> Clergy / Congregational Leader | <input type="checkbox"/> Housing / Builder | <input type="checkbox"/> Media (Paper, TV, Radio) |
| <input type="checkbox"/> College / University | <input type="checkbox"/> Insurance | <input type="checkbox"/> Senior Care / Nursing Home |
| <input type="checkbox"/> Consumer Advocate | <input type="checkbox"/> Labor | <input type="checkbox"/> Social Worker |
| <input type="checkbox"/> Consumers of Healthcare | <input type="checkbox"/> Law Enforcement | <input type="checkbox"/> Veteran |
| <input type="checkbox"/> Dentist | <input type="checkbox"/> Low Income / Free Clinics | <input type="checkbox"/> Welfare / Social Service |
| <input type="checkbox"/> Economic Development | <input type="checkbox"/> Mental Health | |
| <input type="checkbox"/> Education Official / Teacher | <input type="checkbox"/> Nursing | |
| <input type="checkbox"/> Other (please specify) | | |

2016 Community Health Needs Assessment - Atchison County

You have just completed the Community Health Needs Assessment Survey. Thank you for your participation. By hitting "Next," you are submitting your responses and giving others an opportunity to complete the same survey.

Again, thank you for your participation.

CHNA Report Contact :



Vince Vandelaar, MBA
VVV Consultants LLC
***Adjunct Professor / Professional Healthcare
Marketing and Strategic Planning Consulting
Services***

*601 N Mahaffie, Olathe, KS 66061
(913) 302-7264 (C)
VVV@VandelaarMarketing.com*

*LinkedIn: vandelaar
Website: VandelaarMarketing.com*